



49 Springbrook Parade, Idalia

Stunning home in Idalia

Welcome to 49 Springbrook Parade, Idalia - a stunning modern home that delivers style, space, and effortless living.

Designed with family comfort in mind, this beautifully presented four-bedroom, two-bathroom home offers a generous open-plan layout that flows seamlessly from the living areas through to the outdoor entertaining space.

The kitchen sits at the heart of the home, overlooking the dining and lounge areas - perfect for keeping everyone connected. There's also a dedicated theatre room, ideal for movie nights or a private retreat to unwind.

Fully air conditioned throughout, every room offers year-round comfort. The master suite features a private ensuite and walk-in robe, while the remaining bedrooms are positioned for privacy and practicality.

Outside, the home is complete with a double lock-up garage, a low-maintenance yard, and plenty of room for kids and pets to play.

Set in a sought-after pocket of Idalia, you'll enjoy easy access to local parks, schools, cafes, and shopping - everything you need for modern

4 🏠 2 🚿 2 🚗

FOR SALE
Offer's Over \$1mil

VIEW
By Appointment

AGENTS
Jackson Page
0400 368 968
sellwithme@ljhooker.com.au

AGENCY
LJ Hooker Townsville
07 44262125

All information contained therein is gathered from relevant third parties sources.
We cannot guarantee or give any warranty about the information provided.
Interested parties must rely solely on their own enquiries.

 **LJ Hooker**

family living.

49 Springbrook Parade is the perfect combination of contemporary design, functionality, and location - ready for you to move in and make it home.

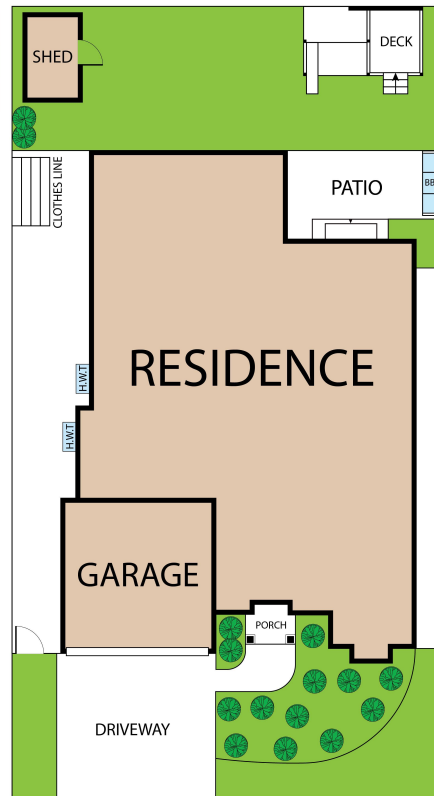
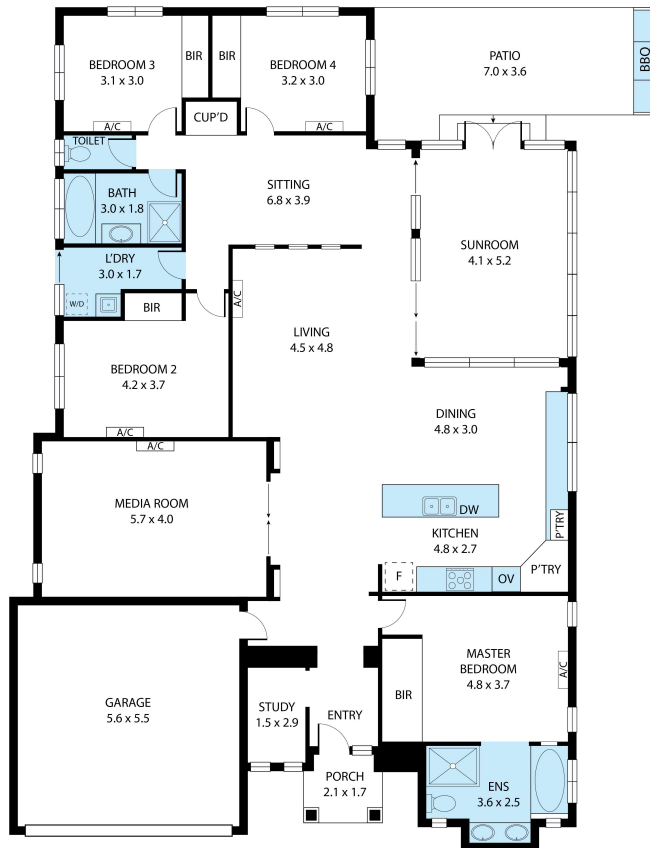
MORE DETAILS

Property ID 4AZHWK
Property Type House

Jackson Page 0400 368 968
Sales & Marketing Consultant | sellwithme@ljhooker.com.au

LJ Hooker Townsville 07 44262125
Shop 18/39 Eyre Street, NORTH WARD QLD 4810
townsville.ljhooker.com.au | townsville@ljhooker.com.au





49 Springbrook Parade, Idalia, QLD, 4811
TOTAL APPROX. FLOOR AREA 271 SQ.M

Whilst every attempt has been made to ensure the accuracy of the floor plan contained here, measurements of doors, windows, rooms and any other items are approximate and no responsibility is taken for any error, omission, or misstatement. This plan is for illustrative purposes only and should be used as such by any prospective purchaser.

LIVING	:	209 SQ.M
ENTRY	:	3 SQ.M
PORCH	:	3 SQ.M
GARAGE	:	32 SQ.M
PATIO	:	24 SQ.M
TOTAL	:	271 SQ.M

All information contained therein is gathered from relevant third parties sources.
We cannot guarantee or give any warranty about the information provided.
Interested parties must rely solely on their own enquiries.