

13 Gregson Drive, Huntly


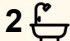
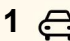
Top of the Hill Delight

Are you looking for peace and quiet and somewhere to put your feet up? Then step inside to 13 Gregson Drive Huntly this property offers an inviting open-plan living and dining area that flows effortlessly to a wrap-around deck, perfect for relaxing or entertaining while enjoying elevated views, additional features are three generous double bedrooms, including a master with ensuite, along with a family bathroom complete with a bath, double glazed throughout and a centrally placed heat pump to keep the home warm and dry.

Positioned at the end of a private cul-de-sac, this well-presented three-bedroom, two-bathroom home offers comfort, privacy, and easy living. Outside, the property offers good off-street parking and a convenient carport at the front, making everyday living simple and practical.

This home is perfect for first-home buyers, downsizers, or those seeking a low-maintenance lock-up-and-leave lifestyle in a peaceful setting.

50 minutes to Auckland Airport
25 minutes to Te Awa the Base
(approx.)

3  2  1 

FOR SALE
\$640,000

VIEW
By Appointment

AGENTS
Corinna Findlay
02102461677
corinna@ljh.nz

AGENCY
LJ Hooker Ngaruawahia
(07) 824 8601
Twin Rivers Real Estate Limited

All information contained therein is gathered from relevant third parties sources.
We cannot guarantee or give any warranty about the information provided.
Interested parties must rely solely on their own enquiries.

 **LJ Hooker**

Viewing by appointment only.

Call Corinna Findlay today to arrange your viewing.
021 024 61677

MORE DETAILS

Property ID	7T3HFH
Property Type	House
House Size	111 m2
Land Area	400 m2
Including	Ensuite
Licensed Real Estate Agents (REAA2008)	

Corinna Findlay 02102461677

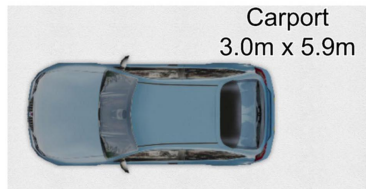
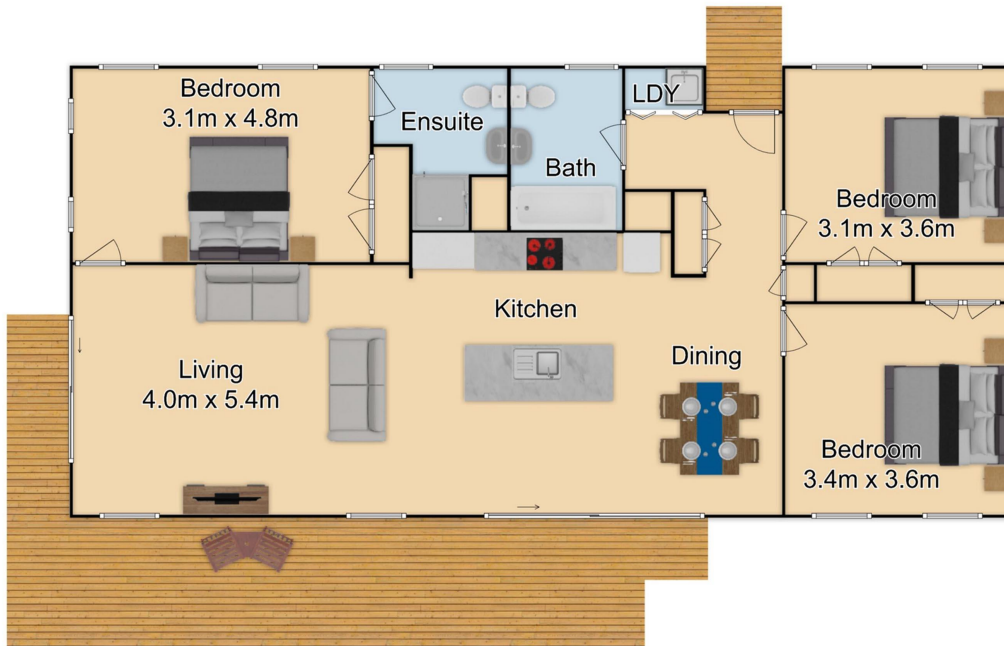
Salesperson/Property Investment Manager | corinna@ljh.nz

LJ Hooker Ngaruawahia (07) 824 8601

Twin Rivers Real Estate Limited
22 Galileo Street, NGARUAWAHIA NZ 3720
ngaruawahia.ljhooker.co.nz | info@ljh.nz



All information contained therein is gathered from relevant third parties sources.
We cannot guarantee or give any warranty about the information provided.
Interested parties must rely solely on their own enquiries.



This floor plan is designed for illustrative purposes only, to assist in the marketing of this property. All measurements are approximate. This floor plan cannot be reproduced without prior consent.



All information contained therein is gathered from relevant third parties sources. We cannot guarantee or give any warranty about the information provided. Interested parties must rely solely on their own enquiries.

