

222 Carella Street, Howrah

Howrah - Big Home, Big Views...Big Potential

Ant's "Fluff-Free" Description...

If you've been waiting for a spacious family home with room to move and the chance to add your own style, this is it.

Solid, practical and set in one of the Eastern Shore's favourite suburbs, it's a lifestyle winner.

What You'll Love

- Room to spread out - approx. 272 sqm of living space
- Upstairs brings three bedrooms, two bathrooms (main and ensuite), a large light-filled living zone with fireplace, and a deck for coffee or wine with stunning water, mountain and garden outlook.
- Downstairs offers a fourth bedroom or guest retreat, another bathroom, a proper laundry, huge storage areas, and an internal garage.

4 3 4

FOR SALE

Offers over \$795,000

AGENTS

Ant Manton
0408 621 856
antmanton@ljhookerpinnacle.com

Anna Holmes
(03) 6272 8177
aholmes@ljhpinnacle.com.au

AGENCY

LJ Hooker Pinnacle Property
(03) 6272 8177

All information contained therein is gathered from relevant third parties sources.
We cannot guarantee or give any warranty about the information provided.
Interested parties must rely solely on their own enquiries.

LJ Hooker

- A seriously generous block backing onto green reserve land. Plenty of yard for kids, pets, vege gardens or a future studio. No neighbours towering over you and a leafy outlook that's hard to beat.
- Included goodies: built-in fixtures and fittings, appliances (vacuum, heating and alarm systems, oven and hob, automatic garage door) and the garden shed.
- Solid mid-80's bones - updated after a fire back then, so the roof, kitchen and interiors are from that era and have stood the test of time. It's the perfect blank slate to modernise and make your own.
- Mains water and sewer connected. No tricky tanks or septic surprises.
- Easy commute and beach life combined. A quick trip over the Tasman Bridge gets you to Hobart CBD, or just stroll to Howrah Beach, parks and Shoreline shopping.
- Family-friendly vibe with Howrah Primary close by and good secondary schools a short drive or bus ride away.

Who's Going to Want It

- Families who need space for kids, pets, hobbies and future plans.
- Renovators itching to put their stamp on a classic.
- Upsizers wanting a strong Eastern Shore address without paying for someone else's taste.
- Savvy buyers who see potential and aren't afraid of a little elbow grease.

Handling the "Yeah, But..."

- No NBN? Plans and providers are available - connect and you're sorted.
- Dated interiors? A blank canvas to create exactly what you want (no guilt about ripping out someone else's choices).
- Reserve behind and side paths? Great privacy with a green outlook. Paths are rarely busy - and you could fence if you like.
- No solar yet? More reason to future-proof and add value your way.

Why wait? Big homes on generous blocks in this pocket of Howrah don't come along every day.

Move in, rent out, or roll up your sleeves and create something special - either way, you'll be winning in a suburb loved for its lifestyle and future growth.

Snap it up before someone else does.

Onwards and upwards to your Howrah classic with views!

"I Work Harder - It's THAT Simple!

Disclaimer: The information contained herein has been supplied to us and we have no reason to doubt its accuracy, however, cannot guarantee it. Accordingly, all interested parties should make their own enquiries to verify this information.

MORE DETAILS

Property ID	BDJ1F
Property Type	House
House Size	272 m2
Land Area	684 m2
Including	Ensuite Study Toilets (3) Courtyard Balcony Deck Outdoor Entertaining Workshop Built-in-Robes Secure Parking Remote Garage

Ant Manton 0408 621 856

Real Estate Agent | antmanton@ljhookerpinnacle.com

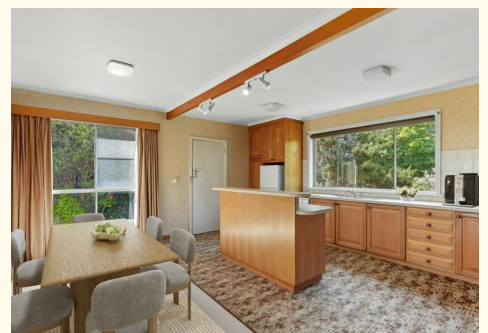
Anna Holmes (03) 6272 8177

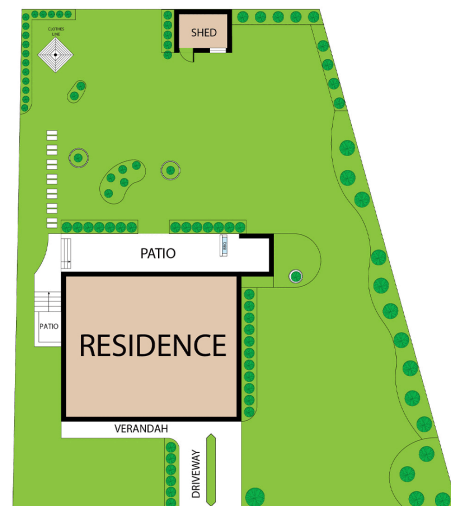
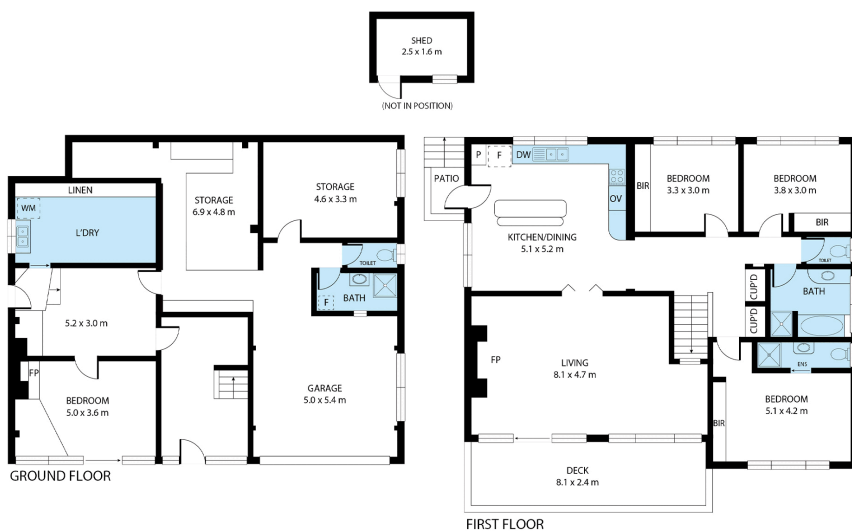
Executive Assistant to Ant Manton | aholmes@ljhpinnacle.com.au

LJ Hooker Pinnacle Property (03) 6272 8177

402 Main Road, GLENORCHY TAS 7010

pinnacleproperty.ljhooker.com.au | hello@ljhpinnacle.com.au





222 Carella Street, Howrah

House area: 272 sqm

Areas and dimensions are approximate and therefore this floor plan should only be used for illustrative purposes.

Real Estate Marketing by nextcreative.com.au

