



28 Morgan Street, Horseshoe Bend

Fully Renovated Lifestyle Home.

This home has had a complete renovation from top to bottom. Featuring quality, modern inclusions throughout the home.




Recent upgrades include:

- New modern kitchen with ample storage and high-quality appliances
- New bathroom and laundry with a luxurious feel
- New flooring throughout the home and each room freshly painted.
- The home has been completely insulated and air-conditioning installed to ensure all year comfort

The new entertainment and new turf areas provide a beautiful space for friends and family.

This stylish cottage offers a rare opportunity to secure a move in ready home in one of Maitland's tightly held pockets. Situated moments from the Hunter River, and a short 500m walk to Maitland CBD, cafes and Restaurants.

Proudly marketed by LJ Hooker Maitland, please call exclusive agents Jack Fisher 0438 165 825 or Todd Fisher 0438 592 920 - 7 days for all inspections & further information.

3  1  1 

FOR SALE
\$740,000

AGENTS

Jack Fisher
0438 165 825
jfisher.maitland@ljhooker.com.au

Todd Fisher
0438 592 920
tfisher.maitland@ljhooker.com.au

AGENCY

LJ Hooker Maitland
(02) 4933 5511

All information contained therein is gathered from relevant third parties sources. We cannot guarantee or give any warranty about the information provided. Interested parties must rely solely on their own enquiries.

 **LJ Hooker**

All information contained herein is gathered from sources we deem to be reliable. However, we cannot guarantee its accuracy and interested persons should rely on their own enquiries.

MORE DETAILS

Property ID	1ESRF6H
Property Type	House
Land Area	294 m2
Including	Air Conditioning
	Toilets (1)
	Built-in-Robes
	Close to Schools
	Close to Shops
	Close to Transport

Jack Fisher 0438 165 825

Sales Associate | jfisher.maitland@ljhooker.com.au

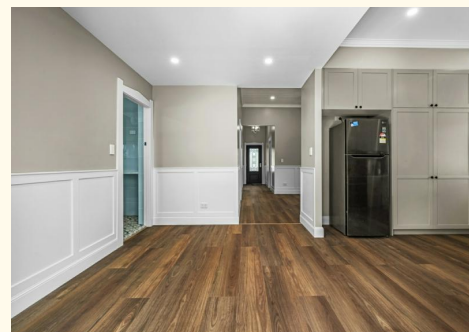
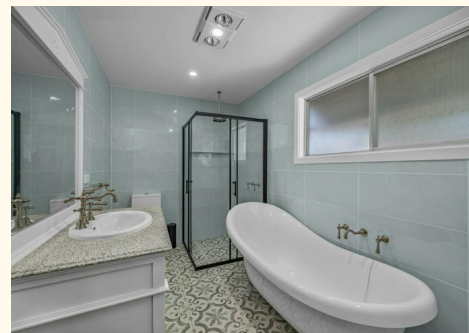
Todd Fisher 0438 592 920

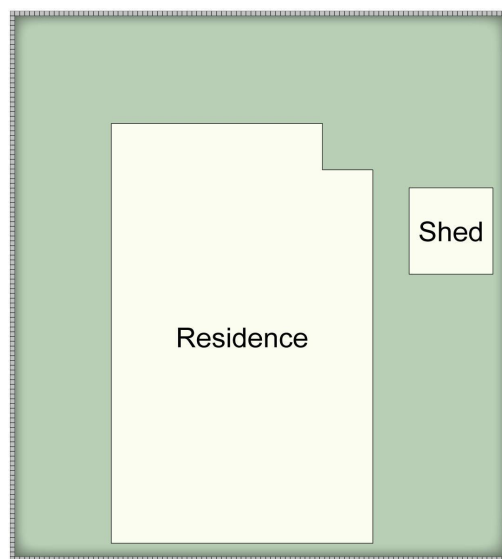
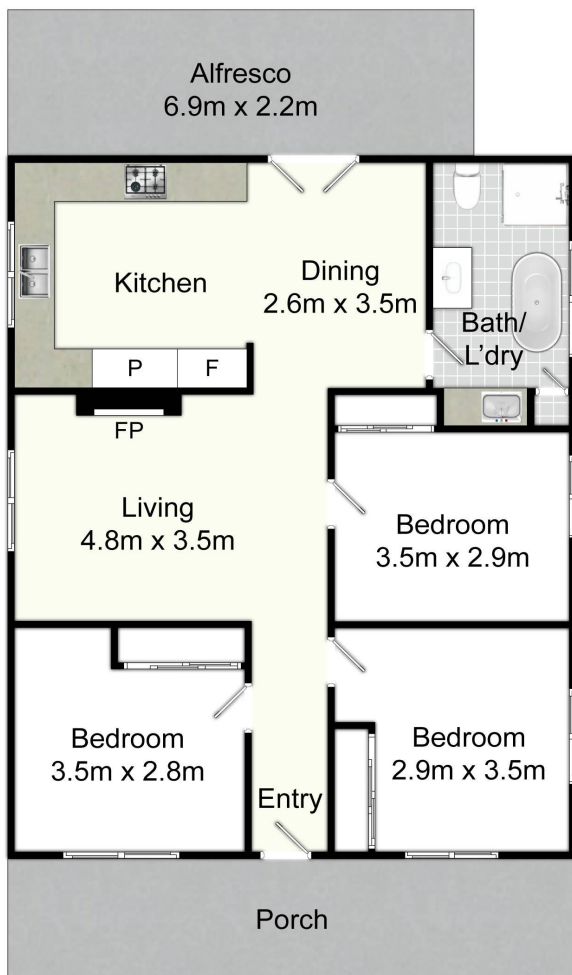
Principal/Licensee in Charge | tfisher.maitland@ljhooker.com.au

LJ Hooker Maitland (02) 4933 5511

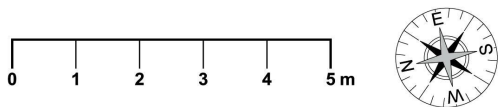
24 Ken Tubman Drive, MAITLAND NSW 2320

maitland.ljhooker.com.au | maitland@ljhooker.com.au





Site Plan
(Not to Scale)



28 Morgan St, Horseshoe Bend

All information contained herein is gathered from sources we deem reliable. However, we cannot guarantee its accuracy and act as a messenger only in passing on the details. Interested parties should rely on their own inquiries and the contract for sale. The floor plans are artist's impressions only. The site plan is not to scale.

 **LJ Hooker**
Maitland

All information contained therein is gathered from relevant third parties sources. We cannot guarantee or give any warranty about the information provided. Interested parties must rely solely on their own enquiries.

 **LJ Hooker**