



Horseshoe Bend, 1 Morgan Street

INNER CITY CONVENIENCE!!

Nestled in a peaceful enclave just steps from the Hunter River, this solidly built single-level home offers a rare opportunity to secure a slice of Maitland's vibrant inner-city lifestyle.

Located a short 500m stroll from the acclaimed Maitland Regional Art Gallery, High Street's cafes, and retail outlets, this home combines retro charm with unlimited potential for a modern transformation.

With its wide 21.7m frontage and a thoughtfully designed layout, the property boasts three generous bedrooms, two separate living areas, and a light-filled eat-in kitchen. Both the kitchen and bathroom have been renovated recently offering that ultra modern feel with convenience of new fittings and fixtures, allowing you to move in and enjoy at your leisure.

Additional highlights include reverse cycle ducted air conditioning, built-in robes, an internal laundry, and a rear courtyard perfect for relaxation. A drive-through carport



For Sale
\$630,000

View
ljhooker.com.au/1DT8F6H

Contact
Kane Bradley
0423 525 335
kbradley.maitland@ljhooker.com.au



LJ Hooker Maitland
(02) 4933 5511

Disclaimer: All information contained therein is gathered from relevant third parties sources. We cannot guarantee or give any warranty about the information provided. Interested parties must rely solely on their own enquiries.

doubles as an alfresco area, leading to a single garage, all surrounded by well-maintained gardens.

Set within walking distance of the picturesque Levee Precinct, cinemas, schools, and sports facilities, the location couldn't be more convenient. For added appeal, The new Maitland Hospital, Stockland Green Hills, and Maitland Train Station are just a short drive away.

Whether you're a first-home buyer, savvy investor, or renovator with a vision, this property presents an incredible opportunity to create your dream home or secure a smart investment in one of NSW's fastest-growing regional hubs.

Act now-properties like this are hard to find!

More About this Property

Property ID	1DT8F6H
Property Type	House
Land Area	445 m2
Including	Air Conditioning Built-in-Robes Close to Schools Close to Shops Close to Transport Liveability

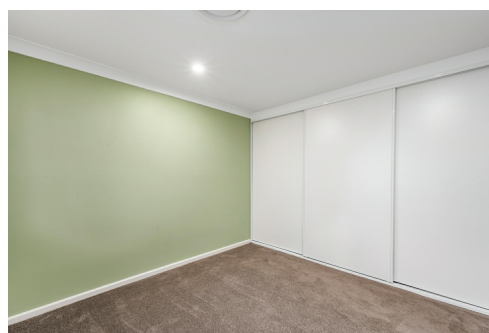
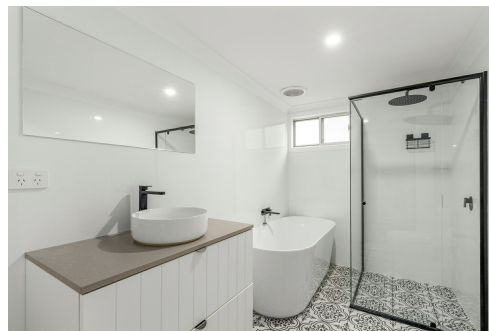
Kane Bradley 0423 525 335

Director | kbradley.maitland@ljhooker.com.au

LJ Hooker Maitland (02) 4933 5511

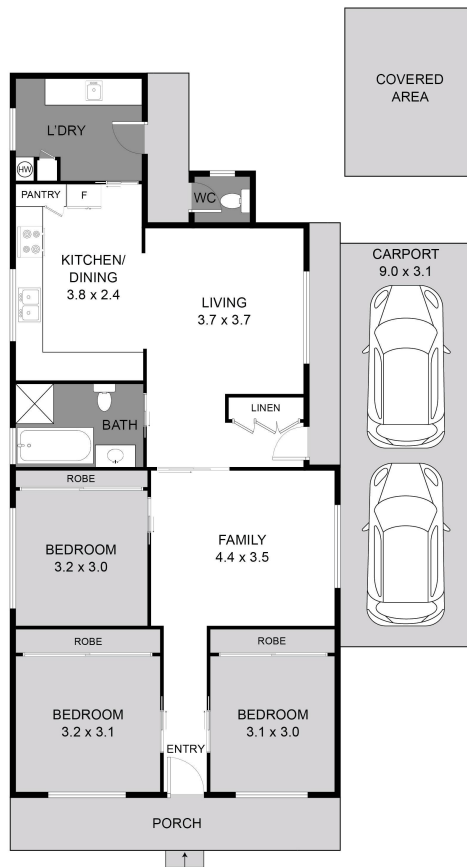
24 Ken Tubman Drive, MAITLAND NSW 2320

maitland.ljhooker.com.au | maitland@ljhooker.com.au



LJ Hooker Maitland
(02) 4933 5511

Disclaimer: All information contained therein is gathered from relevant third parties sources. We cannot guarantee or give any warranty about the information provided. Interested parties must rely solely on their own enquiries.



1 Morgan Street
Horseshoe Bend

DISCLAIMER: Plans shown are for presentation purposes only and not part of any legal document or title. They are subject to errors, omissions, inaccuracies and should not be used as a sole and accurate reference. Interested parties should make their own inquiries using independent sources.

LJ Hooker
Maitland