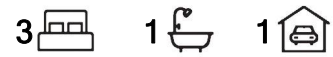


Hope Valley, 1 Chifley Avenue

Solid Home on A Corner Block!



Auction Location: 1 Chifley Avenue, Hope Valley SA 5090

What an opportunity!

Originally constructed in 1980 and solid in construction, this home is ready for its next owner to bring all their ideas to life! Set on a large corner allotment that boasts a clear title with no registered easements or encumbrances, dual street frontages and an outstanding 730sqm (approx.) of Torrens-titled land.

Features include:

- * Three generous-sized bedrooms
- * Master bedroom with built-in robe
- * Light filled living area with ceiling fan
- * Gas wall heater installed in dining area



Disclaimer: All information contained therein is gathered from relevant third parties sources. We cannot guarantee or give any warranty about the information provided. Interested parties must rely solely on their own enquiries.

For Sale
\$749,000

View
By Appointment

Contact
Ryan Graham
0400 912 287
ryang@ljhsales.com.au

**LJ Hooker Greenwith | Golden Grove
| Mawson Lakes | Modbury
(08) 8289 6660**

- * Centralized kitchen with ample bench space including breakfast bar, gas cooktop, electric oven and large fridge cavity
- * Ducted evaporative cooling throughout ideal for the warmer months
- * Ample off-street parking single carport with drive-through ability
- * Large entertainment area the ideal spot to host the family BBQ
- * Dual-street frontages
- * No registered easements or encumbrances

This is a home and a location you will love calling your own!

Conveniently positioned in a central location, within walking distance of Hope Valley Shopping Centre, just moments from major retailers at Westfield Tea Tree Plaza, Modbury Hospital and Civic Park. With a variety of public and private schools nearby, a short commute to the Hope Valley Reservoir and surrounding walking trails, with multiple public transport options close by making travel to the Adelaide CBD a breeze.

Clear the calendar you won't want to miss this one - Register your interest with Ryan Graham today!

All information provided has been obtained from sources we believe to be accurate, however, we cannot guarantee the information is accurate and we accept no liability for any errors or omissions (including but not limited to a property's land size, floor plans and size, building age and condition). Interested parties should make their own enquiries and obtain their own legal and financial advice. Should this property be scheduled for auction, the Vendor's Statement may be inspected at our LJ Hooker Property Specialists Real Estate office for 3 consecutive business days immediately preceding the auction and at the auction for 30 minutes before it starts.

RLA 208516

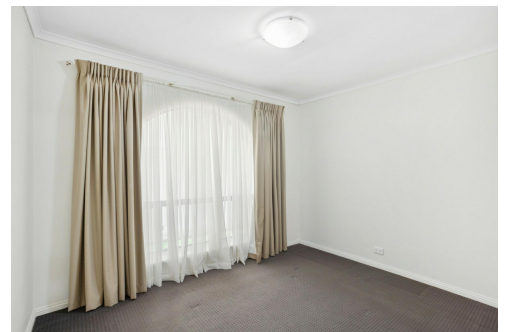
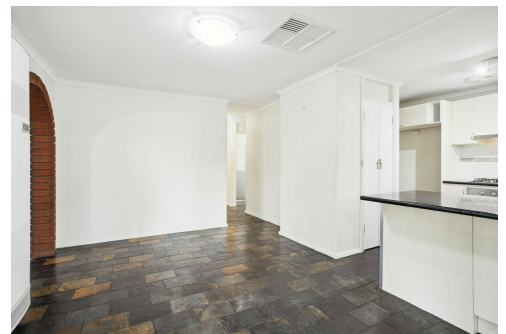
More About this Property

Property ID	2BZSGJU
Property Type	House
House Size	118 m2
Land Area	730 m2

Ryan Graham 0400 912 287
Sales Specialist | ryang@ljhsales.com.au

LJ Hooker Greenwith | Golden Grove | Mawson Lakes | Modbury (08) 8289 6660

North East, Shop 2, 1007 North East Road, RIDGEHAVEN SA 5097
greenwithgoldengrove.ljhooker.com.au | info@ljhsupport.com.au



Disclaimer: All information contained therein is gathered from relevant third parties sources. We cannot guarantee or give any warranty about the information provided. Interested parties must rely solely on their own enquiries.

**LJ Hooker Greenwith | Golden Grove
| Mawson Lakes | Modbury
(08) 8289 6660**



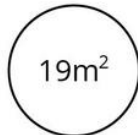
TOTAL



Living



Shed



Carport



Verandah

Scale in metres. This drawing is for illustration purposes only. All measurements are approximate and details intended to be relied upon should be independently verified.

Produced by **The Fotobase Group**