



Hope Island, 10-12 Sickie Avenue

Brand New Top-Floor Waterfront Penthouse —Move-In Ready

3 2 2

For Sale
\$1,945,000

View
By Appointment

Contact
Helen Telfer
0411 396 950
helen@ljhookersgc.com.au

Step into luxury on the exclusive top floor of this expansive 3-bedroom waterfront skyhome, where construction is complete and you can move in immediately. Positioned on the highest level, this residence offers uninterrupted, panoramic views of the water and Gold Coast skyline-visible from almost every angle.

Designed for effortless modern living, the open-plan layout is enhanced by premium contemporary finishes and an abundance of natural light, creating a sense of space and sophistication.

This elegant home features three generously sized bedrooms-each with its own ensuite-plus a stylish powder room, a flexible multipurpose room, separate laundry, and a walk-in pantry.

LJ Hooker

LJ Hooker Southern Gold Coast
(07) 5534 4033

Disclaimer: All information contained therein is gathered from relevant third parties sources. We cannot guarantee or give any warranty about the information provided. Interested parties must rely solely on their own enquiries.

Enjoy the convenience of two secure undercover car spaces and a private basement storage cage. This is exclusive, refined waterfront living at its finest.

ALSO AVAILABLE ON LEVEL 6 WITH THE SAME FLOOR PLAN FOR \$1,895,000

SKYHOME APARTMENT FEATURES

- Miele gas cooktop
- Miele wall oven
- Miele washer & dryer
- Engineered timber flooring to living areas
- Carpet to bedrooms
- Integrated refrigerator
- Wine fridge
- Stone benchtop
- Bath in master ensuite
- Butler's pantry
- Walk-in laundry

RESIDENTS' FACILITIES

- Business lounge with private offices and boardroom facilities
- Two luxurious pools
- Sauna
- Outdoor heated spa
- State-of-the-art gymnasium
- Yoga/Pilates room
- Children's indoor play area
- Zen garden
- Private screening/media room
- BBQ facilities
- Pet wash bay
- Secure residents' underground parking
- 24 hour onsite management
- Secure lift/level access
- Body Corp - \$100 p/w approx.

LOCATION, LOCATION, LOCATION!!

- Hope Island Marketplace 2 minutes' walk
- Hope Island Tavern 5 minutes' walk
- Mater Health Centre 7 minutes' walk
- Coles Hope Island 4 minutes' drive
- The Palms Golf Course 7 minutes' drive
- Runaway Bay Shopping Centre 9 minutes' drive
- Centrally located to the M1 Pacific Motorway
- Mins from ALL public transport

Disclaimer:

All information (including but not limited to the property area, floor size, price, address and general property description) is provided as a convenience to you, and has been provided to LJ Hooker by third parties. LJ Hooker is unable to definitively confirm whether the information listed is correct or 100% accurate. LJ Hooker does not accept any liability

LJ Hooker

**LJ Hooker Southern Gold Coast
(07) 5534 4033**

Disclaimer: All information contained therein is gathered from relevant third parties sources. We cannot guarantee or give any warranty about the information provided. Interested parties must rely solely on their own enquiries.

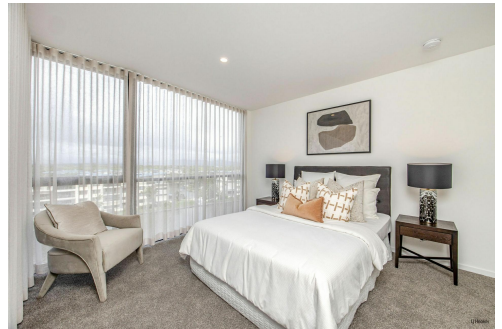
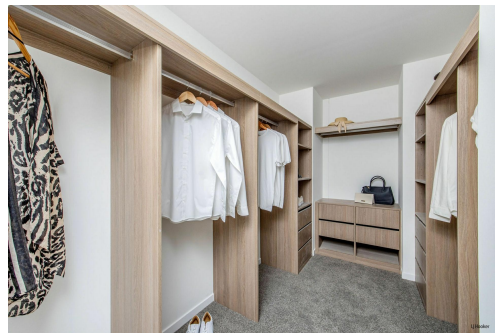
(direct or indirect) for any injury, loss, claim, damage or any incidental or consequential damages, including but not limited to lost profits or savings, arising out of or in any way connected with the use of any information, or any error, omission or defect in the information, contained on the Website. Information contained on the Website should not be relied upon and you should make your own enquiries and seek legal advice in respect of any property on the Website. Prices displayed on the Website are current at the time of issue, but may change.

More About this Property

Property ID	1UTAF47
Property Type	Apartment

Helen Telfer 0411 396 950
Sales & Marketing Specialist | helen@ljhookersgc.com.au

LJ Hooker Southern Gold Coast (07) 5534 4033
Shop 2, 10 Fifth Avenue, PALM BEACH QLD 4221
southerngoldcoast.ljhooker.com.au | enquiries@ljhookersgc.com.au



LJ Hooker

Disclaimer: All information contained therein is gathered from relevant third parties sources. We cannot guarantee or give any warranty about the information provided. Interested parties must rely solely on their own enquiries.

LJ Hooker Southern Gold Coast
(07) 5534 4033



ATHENA QUAYS HOPE ISLAND

TOWER A

UNIT H

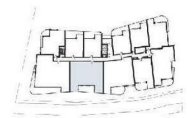
3 BEDROOM +
MPR + POWDER

BEDROOMS	3
BATHROOMS	3.5
PARKING	2

INTERNAL	198 SQM
EXTERNAL	24 SQM
TOTAL	222 SQM



While every effort has been made to accurately describe the details of any development project referred to in this Material, the availability of certain products and Materials and other changes in circumstances may result in some deviation to the description. The developer, agent and vendor accept no responsibility for the accuracy of any information contained in this Material or for any action taken in reliance thereon by any recipient of the Material. Recipients should make their own enquiries to verify themselves as to all the aspects of any development or product referred to herein. All models, rendering, materials, artist's impressions and plans in relation to any development are conceptual and illustrative only. All plans, concepts and materials to be used in any development are subject to approval from all relevant authorities. Changes may be made without notice to the whole or any part of the development. This material only contains general information about our products and services. Unless expressly stated otherwise, this Material does not constitute an offer or inducement to enter into a legally binding contract, form part of the terms and conditions for our products and services, or purport to provide you with personal, financial or investment advice of any kind.



LEVEL 5-8



ANÍKO
GROUP

WWW.ANIKO.COM.AU

ATHENA QUAYS

FLOOR PLAN

LJ Hooker

LJ Hooker

LJ Hooker Southern Gold Coast
(07) 5534 4033

Disclaimer: All information contained therein is gathered from relevant third parties sources.
We cannot guarantee or give any warranty about the information provided. Interested parties must rely solely on their own enquiries.