



24/42-50 Hampstead Road, Homebush West

**Sold by PAULETTE GHALEB**  
**0408 888 810**

Positioned on the first floor, this spacious two-bedroom unit offers an abundance of natural light, a desirable north-east aspect, and a highly convenient lifestyle.

Designed for comfortable living, the apartment features a generous open plan living and dining area that flows seamlessly onto a large balcony overlooking local parklands - the perfect place to relax or entertain while enjoying peaceful views.

Both bedrooms are well proportioned and include built-in wardrobes, with the main bedroom enjoying the added comfort of a private ensuite. The property also includes a well-sized kitchen, neat main bathroom and lock up garage with a total area of approximately 113 sqm including balcony and parking.

Perfectly positioned for convenience, the apartment is within easy reach of a wide range of amenities. Flemington Station is located approximately 550 metres away, providing excellent public transport access. You are also within easy reach to North Strathfield's vibrant café and shopping precinct, while Airey Park is just a short 400 metre walk for outdoor recreation.

2 🏠 2 🚿 1 🚗

**FOR SALE**  
\$670,000

**AGENTS**

Paulette Ghaleb  
0408 888 810  
paulette.ghaleb@ljhooker.com.au

Mo Nazari  
0426 006 001  
moein.nazari@ljhooker.com.au

**AGENCY**

LJ Hooker Parramatta | Granville |  
Guildford | Merrylands  
(02) 9637 8555

All information contained therein is gathered from relevant third parties sources.  
We cannot guarantee or give any warranty about the information provided.  
Interested parties must rely solely on their own enquiries.

 **LJ Hooker**

## Property Features:

- Spacious two-bedroom apartment on the first floor
- North-east aspect with lots of natural sunlight
- Two bedrooms with built-in wardrobes
- Main bedroom with private ensuite
- Spacious open plan living and dining area
- Well-sized kitchen with ample storage
- Two bathrooms including ensuite
- Large balcony with views to the local reserve
- Lock up garage
- Total area approximately 113 sqm (including balcony and parking)
- " Approx. 550m to Flemington Station
- " Close to shops, cafés, parks, and major transport links

This is relaxed, connected living in one of the most convenient locations - an ideal opportunity for first home buyers, investors, or downsizers alike.

## MORE DETAILS

Property ID	2GWNF9E
Property Type	Unit
House Size	113 m2
Land Area	113 m2
Including	Ensuite
	Air Conditioning
	Toilets (2)
	Intercom
	Built-in-Robes
	Area Views
	Car Parking - Basement
	Close to Schools
	Close to Shops
	Close to Transport

### Paulette Ghaleb 0408 888 810

Area Specialist | [paulette.ghaleb@ljhooker.com.au](mailto:paulette.ghaleb@ljhooker.com.au)

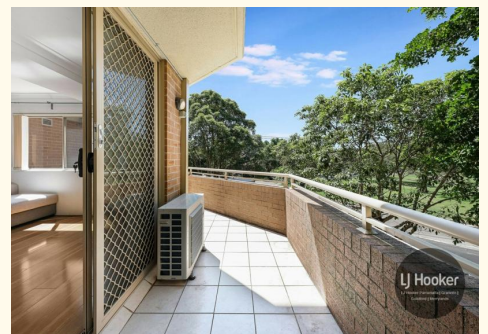
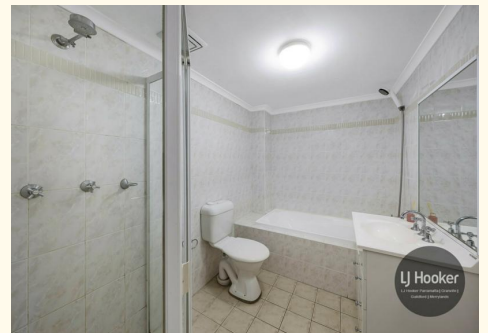
### Mo Nazari 0426 006 001

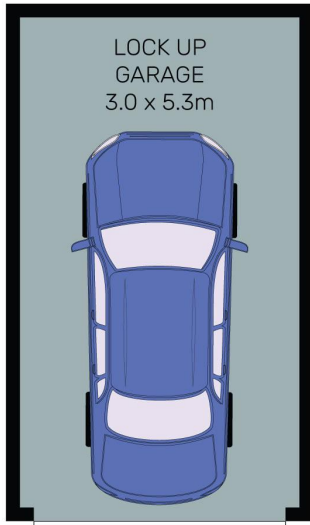
Sales Associate to Paulette Ghaleb | [moein.nazari@ljhooker.com.au](mailto:moein.nazari@ljhooker.com.au)

### LJ Hooker Parramatta | Granville | Guildford | Merrylands (02) 9637 8555

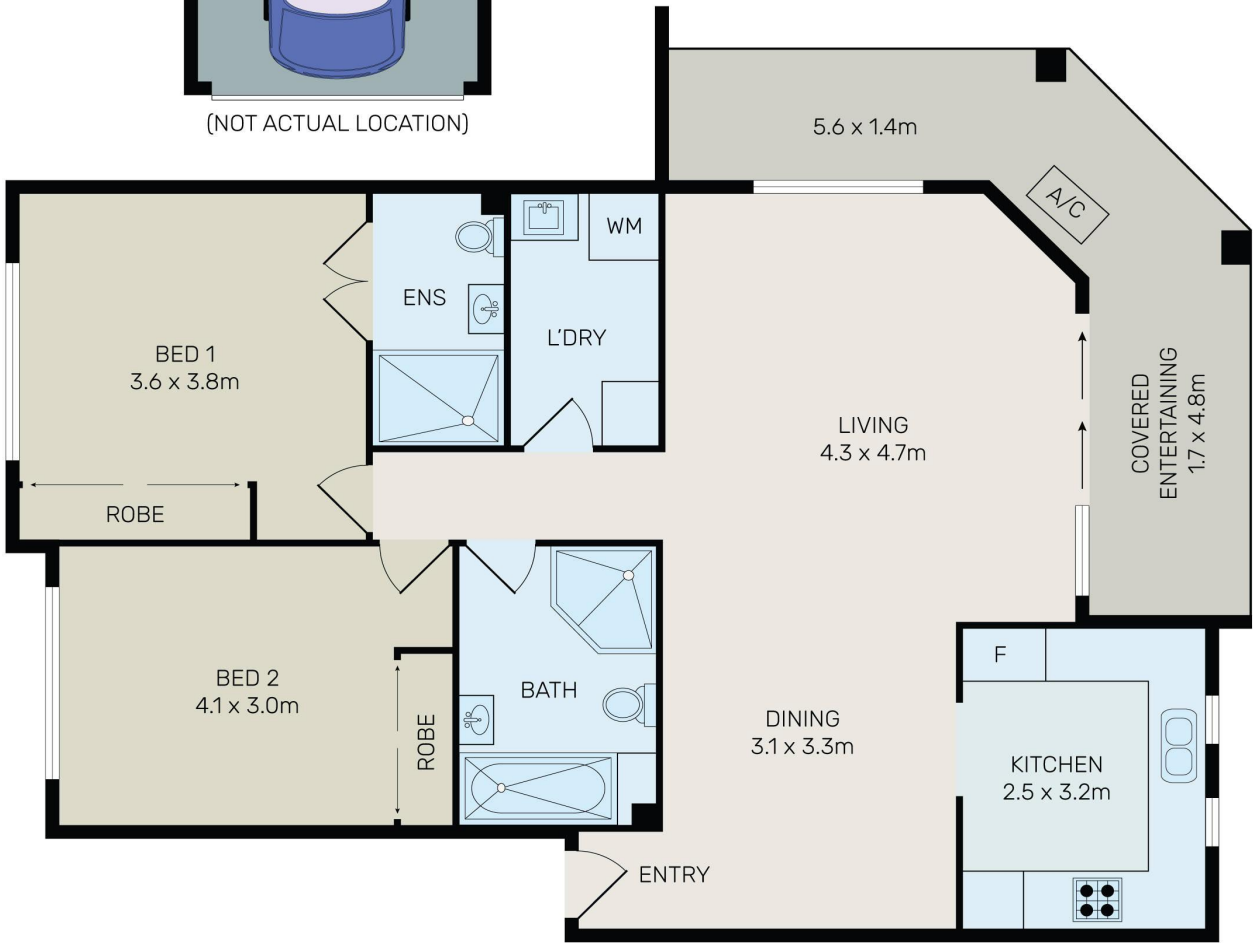
42 South Street, GRANVILLE NSW 2142

[granville.ljhooker.com.au](http://granville.ljhooker.com.au) | [granville@ljhooker.com.au](mailto:granville@ljhooker.com.au)





(NOT ACTUAL LOCATION)



All information contained herein is gathered from all sources we believe to be reliable. However we cannot guarantee its accuracy and interested parties should rely on their own enquiries.

## 24/42-50 Hampstead Road, Homebush

All information contained therein is gathered from relevant third parties sources. We cannot guarantee or give any warranty about the information provided. Interested parties must rely solely on their own enquiries.

