



Holt, 1 Crockett Place

Your New Beginning Starts at 1 Crockett Place

FIND.

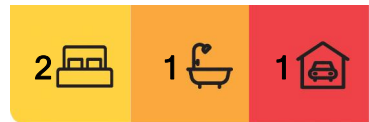
Tucked away in a quiet, family-friendly cul-de-sac in the heart of Holt, 1 Crockett Place is a charming and updated home that offers peace, privacy, and practicality. Perfectly positioned on a low-maintenance block with fertile garden beds and leafy surrounds, this inviting property is ideal for first-home buyers, downsizers, investors, or a young family starting out. Just moments from local shops, schools, parks, and public transport, this is a home that balances convenience with comfort.

LOVE.

With updates throughout, this neat and tidy home is move-in ready and designed to make daily living a breeze. The spacious open-plan living and dining area flows effortlessly into a large kitchen, ideal for entertaining and everyday life. A highlight is the beautiful, covered deck that overlooks the backyard, creating the perfect setting for hosting BBQs, relaxing with a book, or soaking up the sun in the peaceful garden surrounds.



Disclaimer: All information contained therein is gathered from relevant third parties sources. We cannot guarantee or give any warranty about the information provided. Interested parties must rely solely on their own enquiries.



For Sale
Please Call

View
ljhooker.com.au/1HQHF9U

Contact
Eoin Ryan-Hicks
0424 042 419
Eoin.ryan-hicks@ljhooker.com.au
Olivia Schultz
0415 366 287
olivia.schultz@ljhkipax.com.au

EER ★★☆☆☆☆

LJ Hooker Kippax
(02) 6255 3888

LIVE.

Low-maintenance yet surprisingly spacious, this home offers the lifestyle flexibility so many buyers are searching for. With reverse cycle split system heating and cooling, you'll be comfortable year-round. The combination of modern interiors, a functional layout, and charming outdoor spaces makes this a standout option in a quiet and established pocket of Holt. Whether you're taking your first step into the property market or securing a smart investment, 1 Crockett Place is a home to be proud of.

ABOUT THE AREA

Local Transport:

- Easy access to Belconnen Town Centre and the City via nearby bus services

- Close to main arterial roads

Shopping & Dining:

- Kippax Fair Shopping Centre

- Charnwood Shops

- Belconnen Westfield

Schools:

- Kingsford Smith School (K-10)

- St Francis Xavier College

- Cranleigh School

WHAT THE OWNER LOVES:

Our home has been a sanctuary where countless cherished memories were made. We've poured our love into every corner, meticulously maintaining it and creating a space that truly feels like home. Our garden has been a vibrant hub for family time, where we've watched our vegetables and our children grow. The cubby house has been a world of adventure for our kids, and the expansive entertaining deck has hosted joyful gatherings, from lively birthday parties to quiet evenings under the stars. This home offers cozy warmth through the colder months and the ultimate convenience of the primary school being just steps away, making family life beautifully simple. We hope it brings as much happiness to the next owners as it has to us.

OVERVIEW:

- 2 spacious bedrooms with built-in robes
- Renovated bathroom
- Updated throughout
- Large open-plan living and dining area
- Well-appointed kitchen with generous bench space
- Beautiful entertainers' deck
- Fertile garden beds and low-maintenance block
- Reverse cycle split system heating and cooling
- Single car garage
- Ideal for first-home buyers, downsizers, or investors

RATES/SIZE:

- Living area: 75sqm approx.
- Block size: 399sqm
- Rates: \$2,317 p.a. approx.
- Land tax: \$3,431 p.a. approx.
- EER: 2.0



LJ Hooker Kippax
(02) 6255 3888

Disclaimer: All information contained therein is gathered from relevant third parties sources. We cannot guarantee or give any warranty about the information provided. Interested parties must rely solely on their own enquiries.

All information contained herein is gathered from sources we consider to be reliable. However, we cannot guarantee or give any warranty about the information provided. Interested parties must solely rely on their own enquiries.

More About this Property

Property ID	1HQHF9U
Property Type	House
Land Area	399 m2
EER	2

Eoin Ryan-Hicks 0424 042 419

Franchise Owner | Sales Manager | Licensed Agent ACT & NSW | Eoin.ryan-hicks@ljhooker.com.au

Olivia Schultz 0415 366 287

Licensed Agent | Operations Manager for Team Eoin Ryan-Hicks | olivia.schultz@ljhkippax.com.au

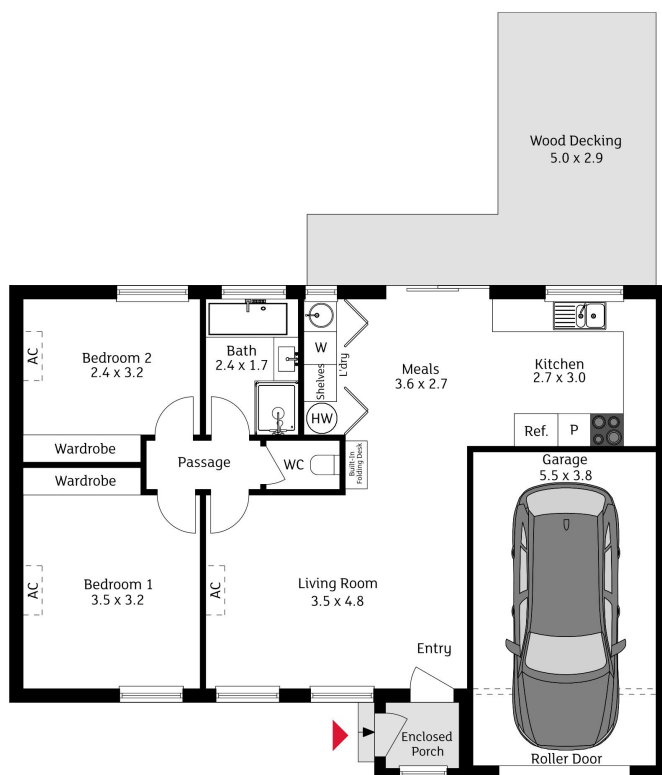
LJ Hooker Kippax (02) 6255 3888

Cnr Luke Street & Hardwick Crescent, HOLT ACT 2615
kippax.ljhooker.com.au | kippax@ljhooker.com.au



Disclaimer: All information contained therein is gathered from relevant third parties sources. We cannot guarantee or give any warranty about the information provided. Interested parties must rely solely on their own enquiries.

LJ Hooker Kippax
(02) 6255 3888



The floor plan is not to scale, measurements are indicative and in metres. Exterior elements are not in position. Plans should not be relied on. Interested parties should make and rely on their own enquiries.

1 Crockett Place, Holt



LJ Hooker Kippax
(02) 6255 3888

Disclaimer: All information contained therein is gathered from relevant third parties sources. We cannot guarantee or give any warranty about the information provided. Interested parties must rely solely on their own enquiries.