



Hokowhitu, 5 Pastoral Lane

Family Living on Pastoral Lane!

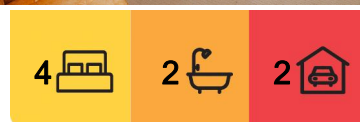
By Negotiation - Rateable Value \$1,160,000.

Superb brick family home, located on the prestigious Pastoral Lane in Hokowhitu will be sure to tick some boxes.

Ideally situated on a back section, providing privacy and room for a growing family.

Spacious open plan living and newly upgraded modern kitchen with walk-in pantry, double fridge space, and two inbuilt ovens, large breakfast bar countertop, ideal for catering to the whole family.

Separate spacious lounge, offering additional space for relaxation or entertainment. Bi-folding doors in both living spaces leading out to a patio, seamlessly blending indoor and outdoor living.



For Sale
By Negotiation

View
ljhooker.co.nz/W65GFB

Contact
Jeannie Boswell
027 445 3048
jeannie@jeannieboswell.co.nz



Disclaimer: All information contained therein is gathered from relevant third parties sources. We cannot guarantee or give any warranty about the information provided. Interested parties must rely solely on their own enquiries.

LJ Hooker Palmerston North
(06) 358 9009
Manawatu (1994) Ltd

Four spacious bedrooms, including a master bedroom with ensuite and walk-in wardrobe and features sliding door access to the patio.

Large main bathroom with separate toilet room for added convenience.

Ample parking space and turnabout, along with an internal double garage with laundry space.

Abundant storage throughout the home, ensuring a clutter-free living environment and heat pump & gas heating to keep your home warm in the cooler months.

This home would be perfect for living the family life, zoned for some great schools including PNINS, PNGHS, PNBHS.

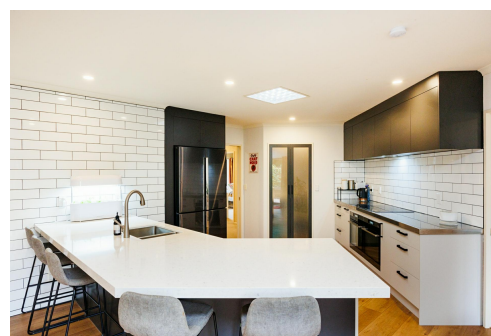
Call Jeannie Boswell now to view this fantastic home!

More About this Property

Property ID	W65GFB
Property Type	House
House Size	230 m ²
Land Area	735 m ²
Licensed Real Estate Agents (REAA2008)	

Jeannie Boswell 027 445 3048
Marketing Consultant | jeannie@jeannieboswell.co.nz

LJ Hooker Palmerston North (06) 358 9009
Manawatu (1994) Ltd
219 Broadway Avenue, PALMERSTON NORTH 4414
palmerstonnorth.ljhooker.co.nz | reception@ljhookerpn.co.nz



Disclaimer: All information contained therein is gathered from relevant third parties sources. We cannot guarantee or give any warranty about the information provided. Interested parties must rely solely on their own enquiries.

LJ Hooker Palmerston North
(06) 358 9009
Manawatu (1994) Ltd