



## Hokowhitu, 215A Victoria Avenue

### PRIME LOCATION - LOW MAINTAINENCE

If you're looking for the perfect blend of space, prime Hokowhitu location, or an outstanding rental investment then this is the property for you!

This Five-bedroom home has character whilst complimented with modern features and is low maintenance.

You're greeted by a large, light and open living area with beautiful warmth of the amber wooden flooring, with a separate living room.

When it comes to outdoor living, this home truly shines. The covered outdoor living area seamlessly connects to the main living space creating the perfect setting for relaxation and entertaining.

For the chef of the home the modern and light kitchen will impress with double ovens ,



**Disclaimer:** All information contained therein is gathered from relevant third parties sources. We cannot guarantee or give any warranty about the information provided. Interested parties must rely solely on their own enquiries.

5

2

1

#### For Sale

Asking Price \$857,000+

#### View

Sun 25th May @ 2:00PM - 2:30PM

#### Contact

**Tracie Van Rysewyk**

0211 437 683

tracie@ljhookerpn.co.nz

**LJ Hooker Palmerston North**

**(06) 358 9009**

Manawatu (1994) Ltd

induction cook top and sleek finishes, and plenty of counter space.

This is your opportunity to secure a wonderful family home or outstanding rental investment positioned in one of the most sought-after locations in Palmerston North.

Boasting , five bedrooms, Master suite with ensuite and access directly out onto the deck, Study nook, Family bathroom with a spa bath, Two heat pumps for easy convenience and comfort , Separate laundry, Home alarm system plus cameras, plus the security of an internal access garage and plenty of off street parking.

Positioned on an easy-care 774m2 (approx.) section, this home offers fabulous convenience, with the CBD, Restaurants and cafes, Top school zones, Manawatu River walkways and the esplanade, all just a short stroll away making this home ideal for families.

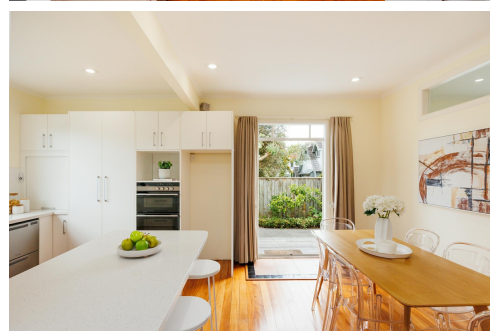
Don't wait- get in touch with Tracie your local LJHooker specialist today to arrange your viewing of this stunning property!

## More About this Property

Property ID	WDRGFB
Property Type	House
House Size	196 m2
Land Area	744 m2
Licensed Real Estate Agents (REAA2008)	

**Tracie Van Rysewyk 0211 437 683**  
Sales & Marketing Specialist | [tracie@ljhookerpn.co.nz](mailto:tracie@ljhookerpn.co.nz)

**LJ Hooker Palmerston North (06) 358 9009**  
Manawatu (1994) Ltd  
219 Broadway Avenue, PALMERSTON NORTH 4414  
[palmerstonnorth.ljhooker.co.nz](http://palmerstonnorth.ljhooker.co.nz) | [reception@ljhookerpn.co.nz](mailto:reception@ljhookerpn.co.nz)



**Disclaimer:** All information contained therein is gathered from relevant third parties sources. We cannot guarantee or give any warranty about the information provided. Interested parties must rely solely on their own enquiries.

**LJ Hooker Palmerston North**  
**(06) 358 9009**  
Manawatu (1994) Ltd