



LJ Hooker



LJ Hooker



LJ Hooker



LJ Hooker

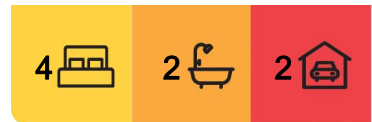
Hillvue, 20 Banjos Circuit

Spacious Family Living with Endless Potential in Hillvue

Discover the potential of 20 Banjos Circuit, Hillvue. This oversized family home offers plenty of space and classic charm, making it ideal for growing families or those looking to renovate and add their personal touch.

With four generously sized bedrooms, two well appointed bathrooms, and a double garage, this property is designed for effortless living. The spacious layout includes multiple living areas, perfect for family time or hosting guests, while the kitchen serves as the heart of the home with ample storage and functionality.

Set in the peaceful and sought-after Hillvue neighborhood, you'll enjoy proximity to schools, parks, and local amenities. This is your chance to secure a home that offers space, comfort, and convenience.



For Sale
Please Call

View
ljhooker.com.au/A48HTE

Contact
Samuel Spokes
0475 843 042
sam.spokes@ljhooker.com.au
Grace Hugo
grace.hugo@ljhooker.com.au



LJ Hooker Tamworth
(02) 6767 1710

Disclaimer: All information contained therein is gathered from relevant third parties sources. We cannot guarantee or give any warranty about the information provided. Interested parties must rely solely on their own enquiries.

More About this Property

Property ID	A48HTE
Property Type	House
Land Area	990 m2
Including	Ensuite Air Conditioning Dishwasher Outdoor Entertaining Workshop Built-in-Robes Secure Parking Fully Fenced

Samuel Spokes 0475 843 042

Licensee, Director - Sales Representative | sam.spokes@ljhooker.com.au

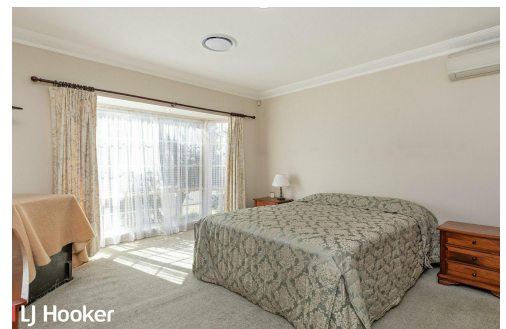
Grace Hugo

Sales Associate | grace.hugo@ljhooker.com.au

LJ Hooker Tamworth (02) 6767 1710

199 Peel Street, TAMWORTH NSW 2340

tamworth.ljhooker.com.au | tamworth@ljhooker.com.au



LJ Hooker Tamworth
(02) 6767 1710

Disclaimer: All information contained therein is gathered from relevant third parties sources. We cannot guarantee or give any warranty about the information provided. Interested parties must rely solely on their own enquiries.