

## Hillier, 5A Murray Hillier Court

### A Truly Exceptional Home

End your search here and discover your forever home. Completed in December 2021, this beautifully maintained property has been cherished by a loving family and is now ready for its next chapter.

Set on a generous 375m<sup>2</sup> (approx.) of land, this home, built by Sterling Homes, showcases an array of desirable features. Upon entering, you'll be welcomed by soaring 2.7m ceilings throughout the entire home, complemented by extra-height doors that enhance the sense of space. The master bedroom, located to the left of the entrance, features a discreet walk-in robe and a spacious ensuite. With a total of four bedrooms, three of which are equipped with built-in robes, this home offers ample accommodation for the whole family.

Relax in the central formal lounge or enjoy quality time with loved ones in the expansive open-plan family area at the rear of the home. Year-round comfort is assured with ducted reverse-cycle air conditioning and ceiling fans throughout.



**Disclaimer:** All information contained therein is gathered from relevant third parties sources. We cannot guarantee or give any warranty about the information provided. Interested parties must rely solely on their own enquiries.



**For Sale**  
\$640,000

**View**  
[ljhooker.com.au/662VFDC](https://ljhooker.com.au/662VFDC)

**Contact**  
**Corey Voss**  
0412 262 180  
[corey.voss@ljhcs.com.au](mailto:corey.voss@ljhcs.com.au)

**LJ Hooker Craigmore | Elizabeth |**  
**Salisbury**  
**(08) 8255 9555**

The kitchen, a true delight for any home chef, is equipped with modern appliances including a dishwasher, a 900mm stainless steel gas cooktop, and an electric under-bench oven. The kitchen's ample cabinetry and large stone benchtops offer plenty of space for meal preparation and casual dining. From the kitchen, step outside to the inviting alfresco entertaining area, complete with a ceiling fan and sun blinds, perfect for enjoying outdoor living under the main roof.

The low-maintenance gardens feature a small grassed area, irrigation to the rear, and a tool shed for additional storage. The double carport, fitted with automatic roller doors, provides secure parking for two vehicles, and the 6kW solar power system ensures reduced electricity bills.

Ideally located near Evanston, this family home is in close proximity to a variety of shopping options, schools, and transport links, making it the perfect place for your family to settle and create lasting memories.

#### Disclaimer:

We have in preparing this document used our best endeavours to ensure the information contained is true and accurate, but accept no responsibility and disclaim all liability in respect to any errors, omissions, inaccuracies or misstatements contained. Prospective purchasers should make their own enquiries to verify the information contained in this document.

RLA155355

## More About this Property

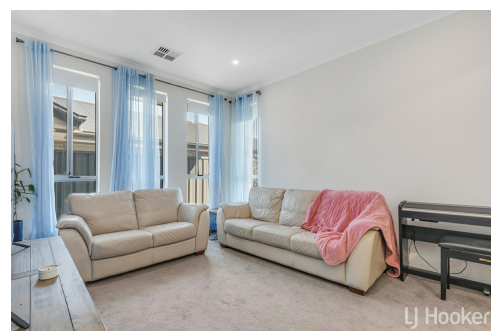
<b>Property ID</b>	662VFDC
<b>Property Type</b>	House
<b>Land Area</b>	375 m <sup>2</sup>

#### Corey Voss 0412 262 180

Licensee & Senior Sales Representative | [corey.voss@ljhcs.com.au](mailto:corey.voss@ljhcs.com.au)

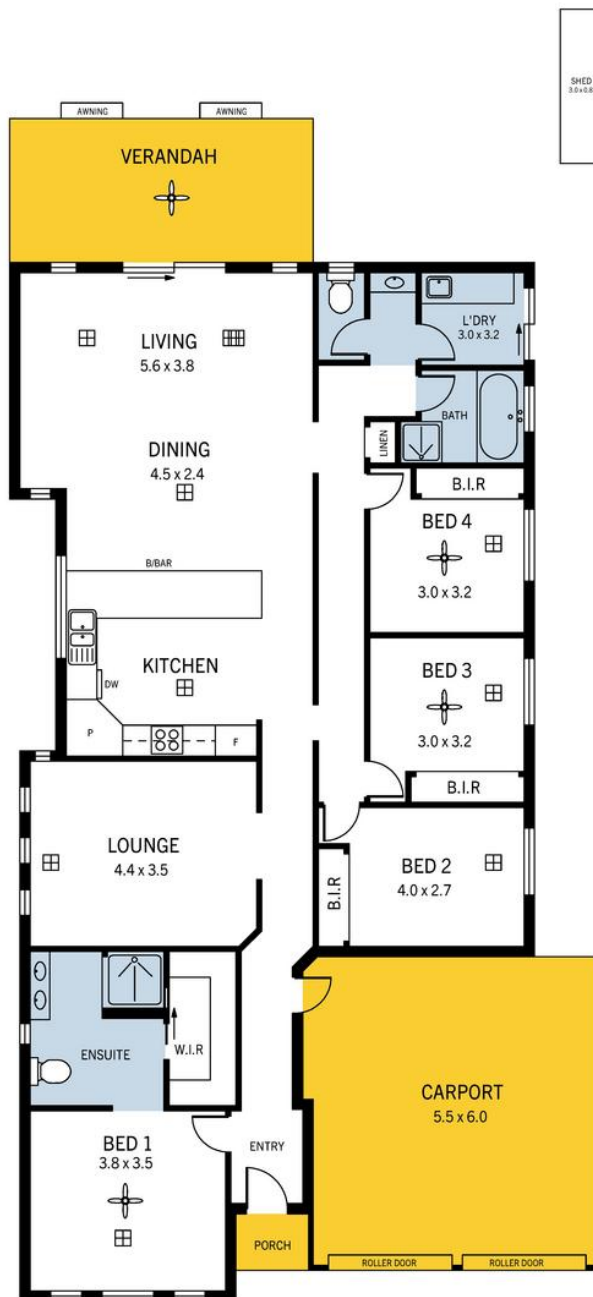
#### LJ Hooker Craigmore | Elizabeth | Salisbury (08) 8255 9555

Shop 17, Craigmore Village, Yorktown Road, CRAIGMORE SA 5114  
[craigmoreelizabeth.ljhooker.com.au](mailto:craigmoreelizabeth.ljhooker.com.au) | [Office@ljhcs.com.au](mailto:Office@ljhcs.com.au)



**Disclaimer:** All information contained therein is gathered from relevant third parties sources. We cannot guarantee or give any warranty about the information provided. Interested parties must rely solely on their own enquiries.

**LJ Hooker Craigmore | Elizabeth | Salisbury  
(08) 8255 9555**



## 5A Murray Hillier Court, Hillier

DISCLAIMER: Floorplan and area calculation are approximate and for illustration purposes only.  
Produced by **Property Portraits**

Interior	155m <sup>2</sup>	<b>210m<sup>2</sup></b> <b>TOTAL</b>
Exterior	53m <sup>2</sup>	
Shed	02m <sup>2</sup>	