



Hillbank, 15 Cambridge Terrace

Beautiful Family Home with Breathtaking Views

4  2  1 

Proudly presented by Andrew Rose of LJ Hooker, this exquisite four-bedroom, two-bathroom family home is a true standout. Perched on the high side of the road among other quality residences, it offers sweeping 180-degree panoramic views that stretch all the way to the coast. A rare find, this property won't be on the market for long!

Designed with flexibility in mind, the spacious floor plan ensures there's room for the entire family. Each of the four bedrooms is generously sized, with the master suite boasting a large walk-in robe, a beautifully appointed ensuite, and sliding doors that open onto a private rear garden retreat. The formal lounge is perfectly positioned to take in the breathtaking views-an ideal spot to unwind as the sun sets and city lights begin to twinkle.

The country-style kitchen seamlessly combines charm with modern functionality, boasting stainless steel appliances, a dishwasher, and plenty of bench space. Overlooking the gardens, the welcoming family room offers a warm and inviting atmosphere, perfect for

For Sale
UNDER CONTRACT BY ANDREW ROSE

View
ljhooker.com.au/66XMFDC

Contact
Andrew Rose
0421 988 597
andrew.rose@ljhces.com.au



**LJ Hooker Craigmore | Elizabeth |
Salisbury
(08) 8255 9555**

Disclaimer: All information contained therein is gathered from relevant third parties sources. We cannot guarantee or give any warranty about the information provided. Interested parties must rely solely on their own enquiries.

cozy evenings.

Additional features include:

- Heating and Cooling
- Roller shutters for privacy and security
- Stylish, modern bathrooms
- Large yet easy-care gardens
- A huge all-weather entertaining area with stunning views, perfect for hosting guests
- A charming gazebo, adding to the outdoor appeal
- Secure single lock-up garage

Specifications:

- CT / 5141/764
- Council / Playford
- Built / 1995
- Easements / NIL
- Estimated rental assessment / \$630-\$650 per week

Nestled on a generous 786sqm block with a tranquil, country-like setting.

All of this is set in a fantastic location, just moments from Jo Gapper Park with its scenic walking trails, a selection of quality schools, and convenient shopping options-including Elizabeth Shopping Centre.

A home like this, offering space, style, and spectacular views, is a rare opportunity. Don't miss your chance-contact Andrew Rose today!

Disclaimer:

We have in preparing this document used our best endeavours to ensure the information contained is true and accurate, but accept no responsibility and disclaim all liability in respect to any errors, omissions, inaccuracies or misstatements contained. Prospective purchasers should make their own enquiries to verify the information contained in this document.

RLA155355

More About this Property

Property ID	66XMFDC
Property Type	House
Land Area	786 m2
Including	Air Conditioning Toilets (2) Secure Parking

Andrew Rose 0421 988 597

Senior Sales Representative | andrew.rose@ljhces.com.au

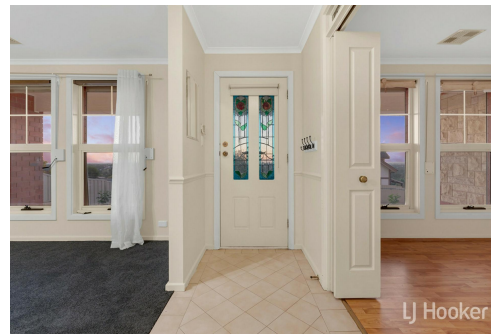
LJ Hooker Craigmore | Elizabeth | Salisbury (08) 8255 9555

Shop 17, Craigmore Village, Yorktown Road, CRAIGMORE SA 5114
craigmoreelizabeth.ljhooker.com.au | Office@ljhces.com.au



Disclaimer: All information contained therein is gathered from relevant third parties sources.

We cannot guarantee or give any warranty about the information provided. Interested parties must rely solely on their own enquiries.



**LJ Hooker Craigmore | Elizabeth |
Salisbury
(08) 8255 9555**



15 Cambridge Terrace, Hillbank

DISCLAIMER: Floorplan and area calculation are approximate and for illustration purposes only.

Produced by **Property Portraits**

Interior	144m ²
Exterior	146m ²
Garage	19m ²

309m²
TOTAL



**LJ Hooker Craigmore | Elizabeth |
Salisbury
(08) 8255 9555**

Disclaimer: All information contained therein is gathered from relevant third parties sources. We cannot guarantee or give any warranty about the information provided. Interested parties must rely solely on their own enquiries.