



Hillbank, 14 Jenolan Crescent

Peaceful Living with Stunning Views

Welcome to 14 Jenolan Crescent, Hillbank - a delightful family home that offers space, comfort, and a truly enviable setting. Perched proudly on the high side of the street, this residence captures sweeping views and backs directly onto a tranquil nature reserve with picturesque walking trails, creating a peaceful and private retreat right in your backyard.

The home's charming street presence sets the tone for what's inside. Offering two living areas, the layout is both functional and family-friendly, with three generously sized bedrooms, including a master with built-in robe. A separate lounge and dining area provide versatile spaces for relaxing or entertaining, and the natural light throughout enhances the sense of warmth and openness.

Outdoors, there's plenty of room to entertain, unwind, or simply enjoy the serene backdrop. The yard flows effortlessly into the reserve at the back of the home, giving you a sense of space and freedom that's hard to find. Whether you're enjoying a morning coffee or hosting



For Sale
UNDER CONTRACT BY ANDREW ROSE

View
ljhooker.com.au/677MFDC

Contact
Andrew Rose
0421 988 597
andrew.rose@ljhces.com.au

Bradley Clarke
0422 070 240
brad.clarke@ljhces.com.au



Disclaimer: All information contained therein is gathered from relevant third parties sources. We cannot guarantee or give any warranty about the information provided. Interested parties must rely solely on their own enquiries.

LJ Hooker Craigmore | Elizabeth | Salisbury
(08) 8255 9555

a weekend barbecue, the connection to nature is always present.

This home also offers exciting potential for those looking to personalise and create their dream forever home. With a fantastic location and plenty of potential, it's the perfect canvas to add your own touches and make it uniquely yours.

Key features:

- Beautiful Views
- 3 Generous Bedrooms
- Solar System
- Low Maintenance yard
- Backs on to a walking trail
- 599sqm (approx.)

Specifications:

- CT / 5063/474
- Council / Playford
- Built / TBA
- Land / 599m2 (approx.)
- Easements / NIL
- Estimated rental assessment / \$TBA per week

Located within close proximity to local schools, public transport, and just a short drive to Elizabeth City Shopping Centre, convenience meets lifestyle in a setting that feels far removed from the hustle and bustle.

An exceptional opportunity in a tightly held pocket of Hillbank - contact Andrew Rose of LJ Hooker Craigmores today to arrange your inspection.

Disclaimer:

We have in preparing this document used our best endeavours to ensure the information contained is true and accurate, but accept no responsibility and disclaim all liability in respect to any errors, omissions, inaccuracies or misstatements contained. Prospective purchasers should make their own enquiries to verify the information contained in this document.

RLA155355

More About this Property

| | |
|---------------|---------|
| Property ID | 677MFDC |
| Property Type | House |
| Land Area | 599 m2 |

Andrew Rose 0421 988 597

Senior Sales Representative | andrew.rose@ljhces.com.au

Bradley Clarke 0422 070 240

Sales Representative | brad.clarke@ljhces.com.au

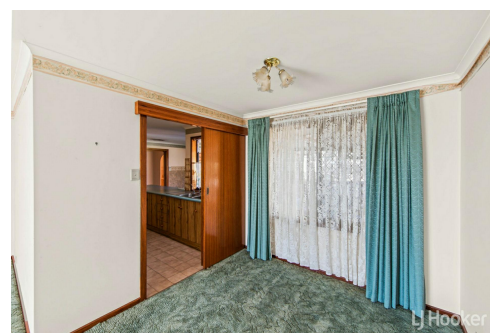
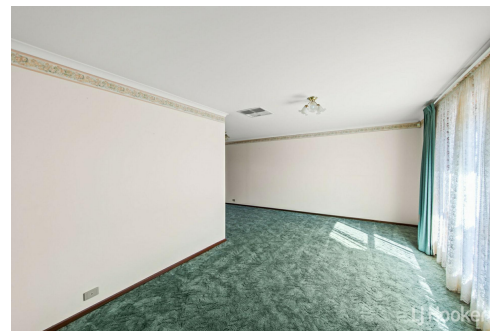
LJ Hooker Craigmores | Elizabeth | Salisbury (08) 8255 9555

Shop 17, Craigmores Village, Yorktown Road, CRAIGMORE SA 5114
craigmoreselizabeth.ljhooker.com.au | Office@ljhces.com.au



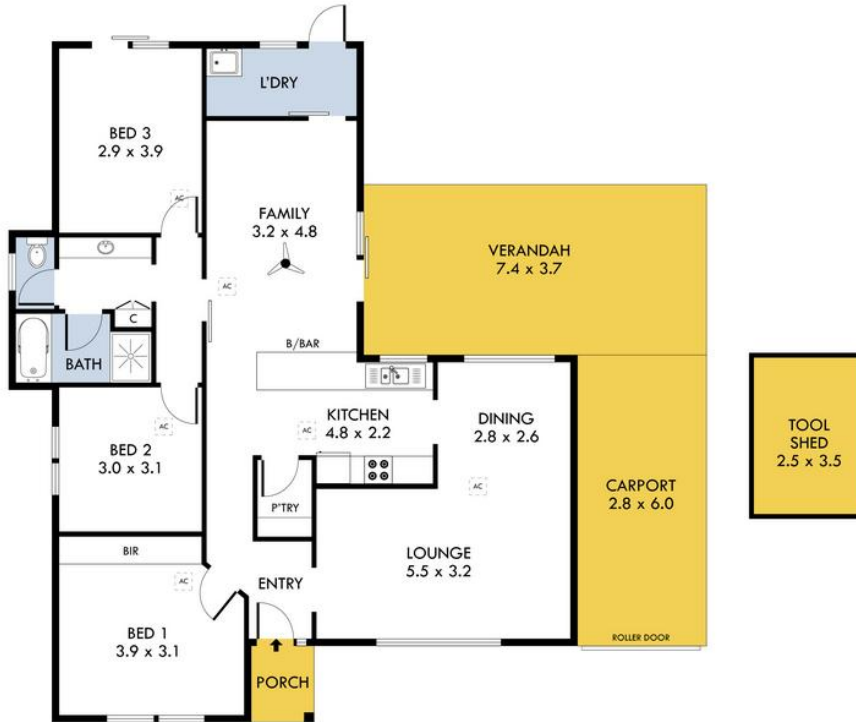
Disclaimer: All information contained therein is gathered from relevant third parties sources.

We cannot guarantee or give any warranty about the information provided. Interested parties must rely solely on their own enquiries.



**LJ Hooker Craigmores | Elizabeth |
Salisbury
(08) 8255 9555**

TOOL
SHED
2.5 x 2.5



14 Jenolan Crescent, Hillbank



INTERNAL - 118.9 SQM
EXTERNAL - 61.4 SQM
TOTAL - 180.3 SQM

Please Note: Every care has been taken to verify the correctness of the areas and details used in this leaflet. No warranty or representation is given or made as to the correctness of the information supplied and neither the owners, illustrator nor the Agent accept responsibility for errors or omissions. The sketch is for illustration purposes only and intending purchasers should satisfy themselves independently regarding sizes, layout and location of the property. Please check with local council that all structures are approved by council.