



Highfields, 7 Eagle Street

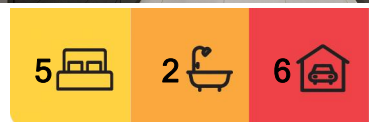
Discover Your Dream Home at 7 Eagle St, Highfields

Step into a world where meticulous care meets modern elegance at 7 Eagle St. This stunning property offers a seamless blend of practical living and aesthetic charm, thoughtfully crafted by its owner.

Upon entry, you're welcomed by a spacious open-plan layout that invites natural light to dance through the rooms. To the left, the exquisite kitchen beckons with ample bench space, sleek modern appliances, and rich contrasting colours that perfectly complement the stylish tiles and walls. It's a culinary haven for both seasoned chefs and casual cooks alike.

To the right, the living, dining, and family areas provide a warm and inviting space, perfect for family gatherings or quiet evenings. Just around the corner, discover a cozy lounge that effortlessly transitions to an entertainer's paradise. Open the large glass doors to reveal a covered outdoor deck, perfect for alfresco dining or simply enjoying the serene surroundings.

With five generously sized bedrooms, a versatile rumpus or TV room, and a dedicated



For Sale
Under Offer

View
ljhooker.com.au/1YE4F4W

Contact
Michael Hosking
0418 718 062
mhosking@ljht.com.au



Disclaimer: All information contained therein is gathered from relevant third parties sources. We cannot guarantee or give any warranty about the information provided. Interested parties must rely solely on their own enquiries.

LJ Hooker Toowoomba
(07) 4688 2222

kids' retreat, this home offers space for everyone. Comfort is paramount, enhanced by a fully ducted heating and cooling system, ensuring your family stays cozy year-round. But the allure doesn't stop there. Step outside to your expansive 2507m² block, featuring a 3-4 bay shed and breathtaking elevated views to the Northwest. This is more than just a home; it's a lifestyle waiting to be embraced for years to come.

Key Features:

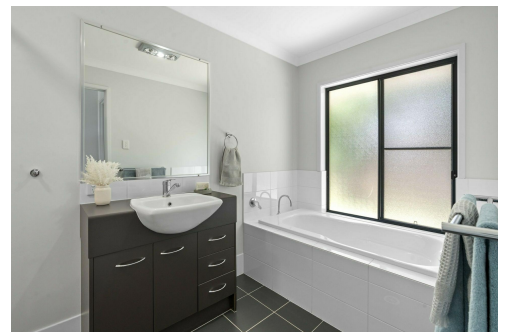
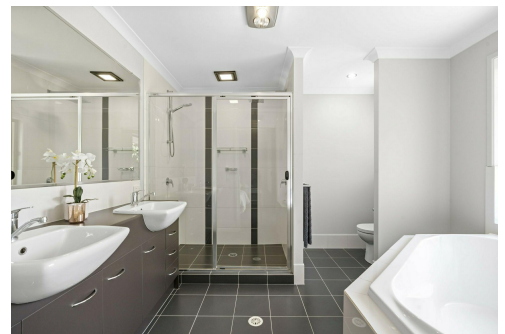
- *32.2 kW Solar System: Reduce your energy bills and embrace sustainable living.
- *3 Phase Power: Available to both the house and shed for enhanced efficiency.
- *3 Phase Air Conditioning: Enjoy reliable and powerful cooling throughout the home.
- *Water Tank: Perfect for the eco-friendly gardener, ensuring a sustainable water supply.
- *Freshly Painted Throughout: Pristine, modern aesthetic in every room.
- *Spacious Open-Plan Living: Ideal for entertaining or relaxing with family.
- *Exquisite Kitchen: Ample bench space and modern appliances designed for functionality and style.
- *Five Generously Sized Bedrooms: plus a dedicated kids' retreat.
- *Versatile Rumpus/TV Room: Perfect for family movie nights or playtime.
- *Casual Lounge Area: Easily transitions to an outdoor entertainment space.
- *Covered Outdoor Deck: Perfect for alfresco dining or enjoying the fresh air.
- *Expansive 2507m² Block: Plenty of room for outdoor activities and landscaping.
- *3-4 Bay Shed: Ample storage for vehicles or tools

More About this Property

Property ID	1YE4F4W
Property Type	House
Land Area	2507 m ²

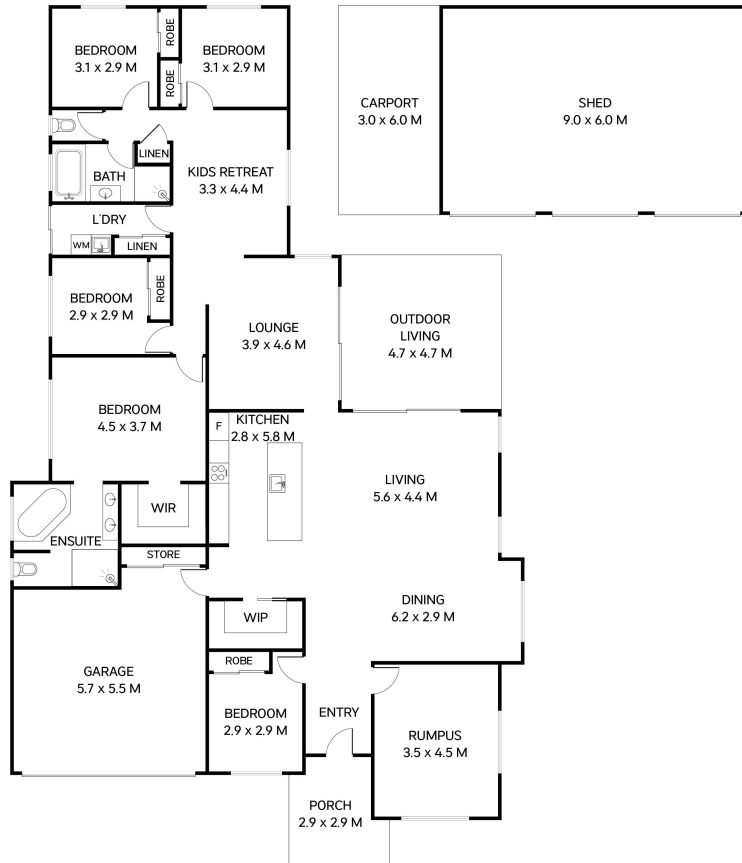
Michael Hosking 0418 718 062
Residential Sales Executive & Auctioneer | mhosking@ljht.com.au

LJ Hooker Toowoomba (07) 4688 2222
Level 1, 677-683 Ruthven Street, TOOWOOMBA QLD 4350
toowoomba.ljhooker.com.au | toowoomba@ljht.com.au



LJ Hooker Toowoomba
(07) 4688 2222

Disclaimer: All information contained therein is gathered from relevant third parties sources. We cannot guarantee or give any warranty about the information provided. Interested parties must rely solely on their own enquiries.



Int: 248m²
 Ext: 31m²
 Total: 279m²

7 Eagle Street Highfields



This plan is for representational purposes only. All dimensions are approximate and shouldn't be solely relied upon. Floorplan created by Vue Digital.



LJ Hooker Toowoomba
(07) 4688 2222

Disclaimer: All information contained therein is gathered from relevant third parties sources. We cannot guarantee or give any warranty about the information provided. Interested parties must rely solely on their own enquiries.