

Highfield, 62 Matai Crescent

For the Love of Living

With a very clever twist of modern exterior, this home offers to the astute buyer. Both a modern kitchen and bathroom, featuring timeless decor. An extra-large conservatory for furnishing with lounges or use as a playroom.

Unbelievable storage and garaging underneath plus extra off-street parking. The property has a large back garden, landscape it to your desire - a lost sanctuary, a play area for the kids, or the best dog run in town? It is fully fenced, very private and located in Highfield, so on the most wanted list!

This is a well presented home, very sunny, and just super smart! Near the Scenic Reserve, Pre-school, and Schools. A pleasure to show you through. Welcome to private view or attend an open home.

Please be aware that some information has been sourced from Property Smarts and we



Disclaimer: All information contained therein is gathered from relevant third parties sources. We cannot guarantee or give any warranty about the information provided. Interested parties must rely solely on their own enquiries.

3

1

1

For Sale

Enquiries Over \$499,000

View

ljhooker.co.nz/14Z3GTA

Contact

Andrea Clegg

021 115 6403

andrea.timaru@ljhooker.co.nz

LJ Hooker Timaru

(03) 688 3029

Enting Real Estate Limited

have not been able to independently verify the accuracy. Land and floor area measurements are approximate and boundary lines are indicative only.

Disclaimer:

This information has been supplied by the owners and Corelogic. LJ Hooker Timaru, Geraldine and Waimate are merely passing over this information as supplied to us. We cannot guarantee its accuracy and reliability as we have not checked, audited or reviewed the information. All intending purchasers are advised to conduct their own due diligence investigation into this information. To the maximum extent permitted by law, we do not accept any responsibility to any part for the accuracy or use of the information herein. Enting Real Estate Limited Licensed (REAA 2008).

More About this Property

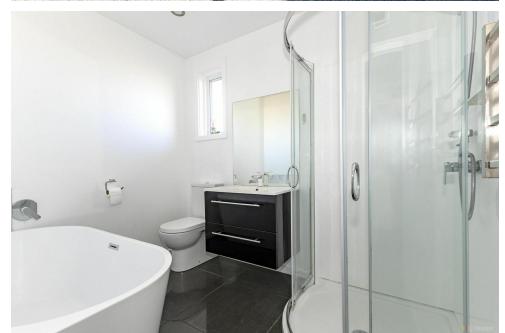
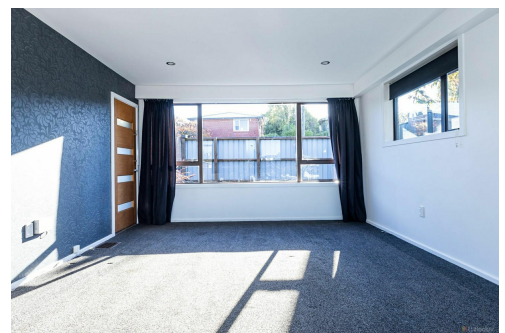
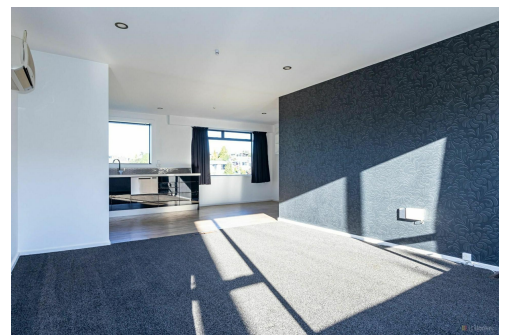
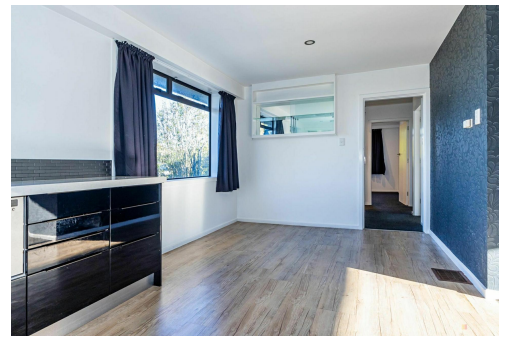
| | |
|--|--------------------|
| Property ID | 14Z3GTA |
| Property Type | House |
| House Size | 160 m ² |
| Land Area | 948 m ² |
| Licensed Real Estate Agents (REAA2008) | |

Andrea Clegg 021 115 6403

Property Consultant | andrea.timaru@ljhooker.co.nz

LJ Hooker Timaru (03) 688 3029

Enting Real Estate Limited
51 Church Street, TIMARU 7910
timaru.ljhooker.co.nz | timaru@ljhooker.co.nz



Disclaimer: All information contained therein is gathered from relevant third parties sources. We cannot guarantee or give any warranty about the information provided. Interested parties must rely solely on their own enquiries.

LJ Hooker Timaru
(03) 688 3029
Enting Real Estate Limited