



Highfield, 31 Douglas Street

Modern Luxury at Its Finest - Stunningly Revamped Home

This beautifully renovated home is move-in ready, offering a perfect blend of style and functionality. Featuring three spacious bedrooms and a sleek, modern bathroom with elegant gold finishes. The open-plan living area provides a welcoming space to relax, complete with a separate study/office off the lounge for added convenience.

The kitchen is a standout, boasting stone benchtops and a cleverly concealed walk-in butler's pantry/laundry. Additional storage under the house ensures plenty of room for bikes and more. Outside, the low-maintenance backyard is ideal for kids and pets to enjoy.

Situated in a sought-after part of town, this home is just a short stroll from the Town and Country Club and Highfield Golf Course, making it the perfect location for lifestyle and leisure.

Photos have been staged and there are no curtains or blinds included in chattels



Disclaimer: All information contained therein is gathered from relevant third parties sources. We cannot guarantee or give any warranty about the information provided. Interested parties must rely solely on their own enquiries.

3

1

0

For Sale

Enquiries Over \$459,000

View

ljhooker.co.nz/15DDGTA

Contact

Ben Groundwater

027 415 6405

ben.timaru@ljhooker.co.nz

Joelle Snook

027 844 5432

joelle.timaru@ljhooker.co.nz

LJ Hooker Timaru

(03) 688 3029

Enting Real Estate Limited

Features:

- Off street parking
- Open plan living
- Gas hot water
- Heat pump
- 3 bedrooms
- Office
- Butlers pantry/laundry

Disclaimer:

This information has been supplied by the owners and Corelogic. LJ Hooker Timaru, Geraldine and Waimate are merely passing over this information as supplied to us. We cannot guarantee its accuracy and reliability as we have not checked, audited or reviewed the information. All intending purchasers are advised to conduct their own due diligence investigation into this information. To the maximum extent permitted by law, we do not accept any responsibility to any part for the accuracy or use of the information herein. Enting Real Estate Limited Licensed (REAA 2008).

More About this Property

Property ID	15DDGTA
Property Type	House
House Size	140 m2
Land Area	327 m2
Including	Toilets (1)
Licensed Real Estate Agents (REAA2008)	

Ben Groundwater 027 415 6405

Property Consultant | ben.timaru@ljhooker.co.nz

Joelle Snook 027 844 5432

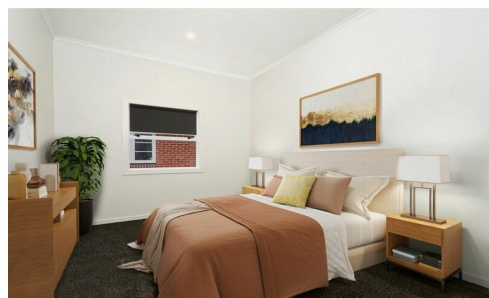
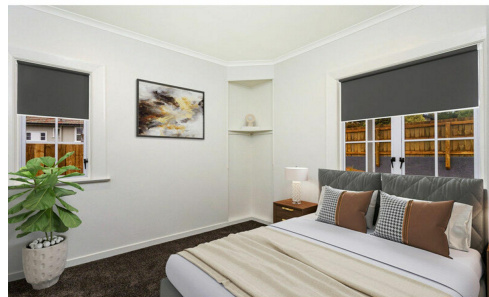
Property Consultant | joelle.timaru@ljhooker.co.nz

LJ Hooker Timaru (03) 688 3029

Enting Real Estate Limited

51 Church Street, TIMARU 7910

timaru.ljhooker.co.nz | timaru@ljhooker.co.nz



Disclaimer: All information contained therein is gathered from relevant third parties sources.

We cannot guarantee or give any warranty about the information provided. Interested parties must rely solely on their own enquiries.

LJ Hooker Timaru

(03) 688 3029

Enting Real Estate Limited