



Highfield, 29 June Street

Hidden Highfield Potential

This hidden spacious three bedroom brick home offers the perfect blend of comfort and potential, located in the highly sought-after Highfield area. Situated on a large 1138m² section with views over the golf course, the sea and the surrounding town, this property is a rare find. With an open plan kitchen and dining area leading to the separate living room offering a peaceful retreat. A double garage and extra off-street parking, there's plenty of room for vehicles and storage.

Enjoy year-round comfort with a heat pump, and make the most of the expansive section with plenty of garden, offering endless opportunities.

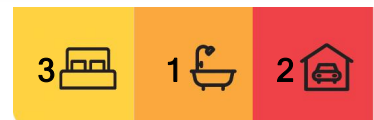
Don't miss out on this fantastic chance to secure a home with huge potential in a prime location!

Features:

- Double garage



Disclaimer: All information contained therein is gathered from relevant third parties sources. We cannot guarantee or give any warranty about the information provided. Interested parties must rely solely on their own enquiries.



For Sale

Enquiries Over \$449,000

View

Sat 3rd May @ 10:15AM - 10:45AM

Contact

Ben Groundwater

027 415 6405

ben.timaru@ljhooke.co.nz

Joelle Snook

027 844 5432

joelle.timaru@ljhooke.co.nz

LJ Hooker Timaru

(03) 688 3029

Enting Real Estate Limited

- Sea views
- Electric hot water
- 1138m2 section
- Heatpump
- Garden shed
- Separate toilet

Disclaimer:

This information has been supplied by the owners and Corelogic. LJ Hooker Timaru, Geraldine and Waimate are merely passing over this information as supplied to us. We cannot guarantee its accuracy and reliability as we have not checked, audited or reviewed the information. All intending purchasers are advised to conduct their own due diligence investigation into this information. To the maximum extent permitted by law, we do not accept any responsibility to any part for the accuracy or use of the information herein. Enting Real Estate Limited Licensed (REAA 2008).

More About this Property

Property ID	15BKGTA
Property Type	House
House Size	170 m²
Land Area	1138 m²
Including	Toilets (1)
Licensed Real Estate Agents (REAA2008)	

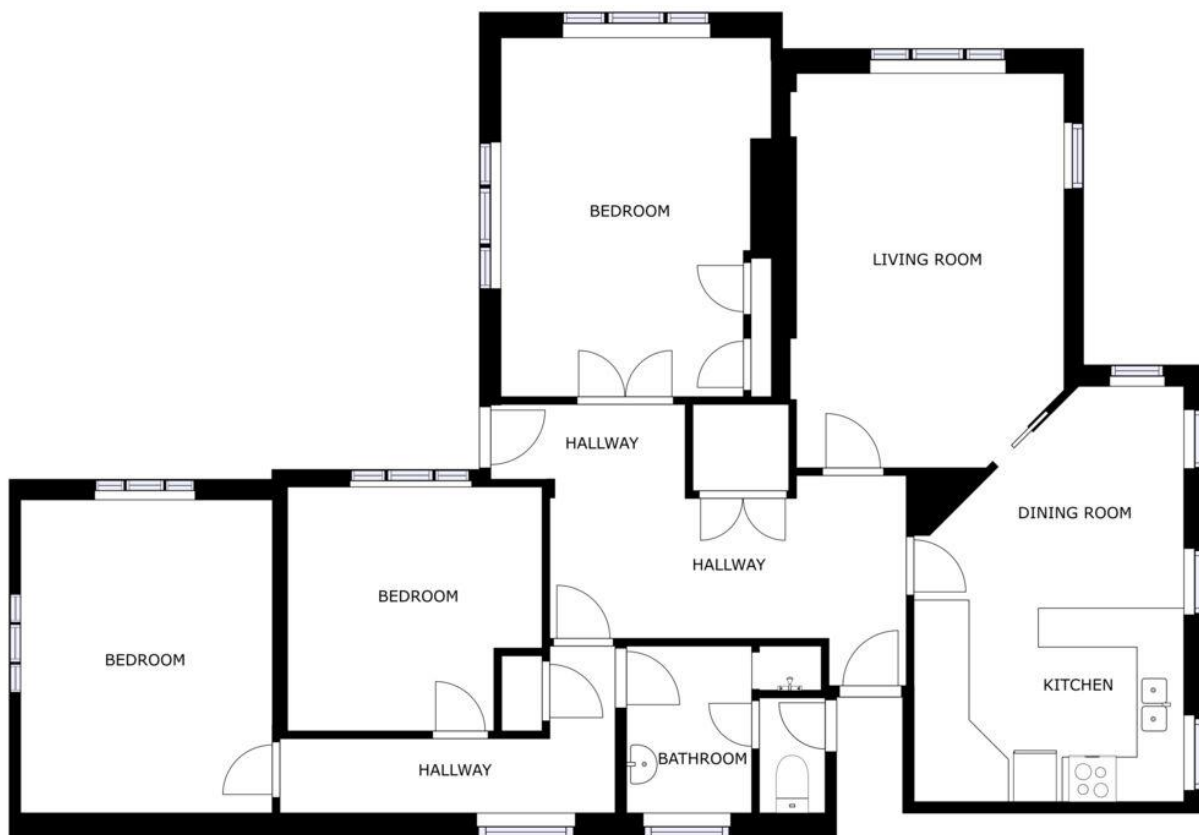
Ben Groundwater 027 415 6405
 Property Consultant | ben.timaru@ljhooker.co.nz
Joelle Snook 027 844 5432
 Property Consultant | joelle.timaru@ljhooker.co.nz

LJ Hooker Timaru (03) 688 3029
 Enting Real Estate Limited
 51 Church Street, TIMARU 7910
 timaru.ljhooker.co.nz | timaru@ljhooker.co.nz



Disclaimer: All information contained therein is gathered from relevant third parties sources. We cannot guarantee or give any warranty about the information provided. Interested parties must rely solely on their own enquiries.

LJ Hooker Timaru
(03) 688 3029
 Enting Real Estate Limited



SIZES AND DIMENSIONS ARE APPROXIMATE, ACTUAL MAY VARY



LJ Hooker Timaru
(03) 688 3029
 Enting Real Estate Limited

Disclaimer: All information contained therein is gathered from relevant third parties sources.
 We cannot guarantee or give any warranty about the information provided. Interested parties must rely solely on their own enquiries.