

Highfield, 10 Chaucer Street

Brick, Double Glazed & Ready For You

Nestled in a fantastic location, this beautifully maintained red brick home has been recently refreshed with new paint, completely rewired, double glazing, and a modernised bathroom. Featuring three generous bedrooms, an open-plan living, dining, and kitchen area, plus the comfort of a cozy fire and a heat pump.

With the convenience of two toilets, a single garage, and additional off-street parking, this home ticks all the boxes. The spacious backyard provides the perfect setting for kids to play or for relaxing outdoors.

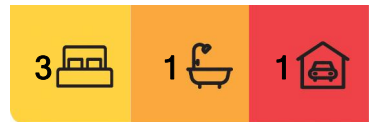
An excellent choice for first-home buyers, those looking to downsize, or savvy investors!

Features:

- Brick
- Double glazed



Disclaimer: All information contained therein is gathered from relevant third parties sources. We cannot guarantee or give any warranty about the information provided. Interested parties must rely solely on their own enquiries.



For Sale
Enquiries Over \$499,000

View
ljhooker.co.nz/15E4GTA

Contact
Ben Groundwater
027 415 6405
ben.timaru@ljhooker.co.nz

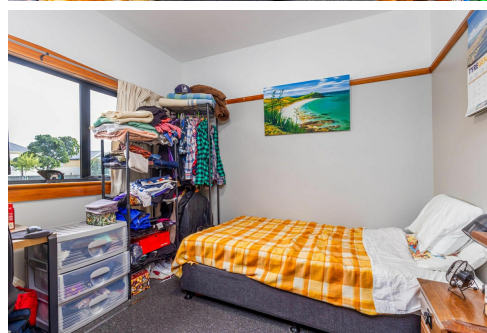
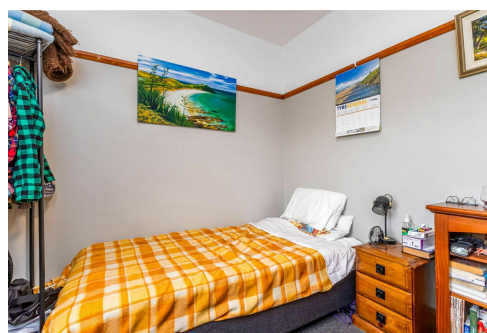
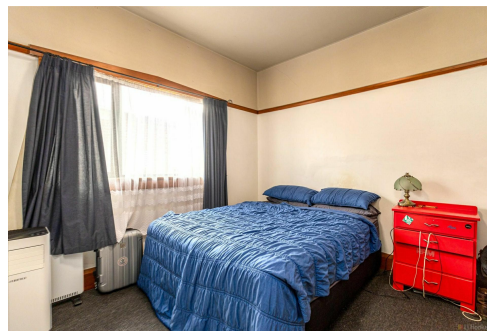
Anja Gordon
021 489 425
anja@ljhtimaru.co.nz

LJ Hooker Timaru
(03) 688 3029
Enting Real Estate Limited

- Updated bathroom
- Two toilets
- Heatpump
- Fire
- Garden shed
- Rewired

Disclaimer:

This information has been supplied by the owners and Corelogic. LJ Hooker Timaru, Geraldine and Waimate are merely passing over this information as supplied to us. We cannot guarantee its accuracy and reliability as we have not checked, audited or reviewed the information. All intending purchasers are advised to conduct their own due diligence investigation into this information. To the maximum extent permitted by law, we do not accept any responsibility to any part for the accuracy or use of the information herein. Enting Real Estate Limited Licensed (REAA 2008).



More About this Property

Property ID	15E4GTA
Property Type	House
House Size	101 m2
Land Area	592 m2
Including	Toilets (2)

Licensed Real Estate Agents (REAA2008)

Ben Groundwater 027 415 6405

Property Consultant | ben.timaru@ljhooker.co.nz

Anja Gordon 021 489 425

Property Consultant | anja@ljhtimaru.co.nz

LJ Hooker Timaru (03) 688 3029

Enting Real Estate Limited

51 Church Street, TIMARU 7910

timaru.ljhooker.co.nz | timaru@ljhooker.co.nz



LJ Hooker Timaru

(03) 688 3029

Enting Real Estate Limited

Disclaimer: All information contained therein is gathered from relevant third parties sources.

We cannot guarantee or give any warranty about the information provided. Interested parties must rely solely on their own enquiries.