

36 Lutwyche Street, Higgins

Where memories are made!

Set on a generous 697sqm block, 36 Lutwyche Street offers the perfect blend of comfort, flexibility, and charm in one of Belconnen's most tightly held suburbs. Freshly painted, light-filled, and thoughtfully updated through the years, this 4-bedroom, 2-bathroom home is ready to move straight into or adapt to your needs.

Something the owner loved was raising their family here, with the children able to walk easily to the local school and Kippax shops. The location also made life easy with quick access to major roads, putting all of Canberra within easy reach. When they extended the home to add a spacious family room and a master bedroom with ensuite, it became an even better place to live, with more space for everyone to enjoy.

Bathed in natural sunlight at all times of the day, the home's bright and airy interiors create a warm and welcoming atmosphere. A fantastic feature is the two separate living areas, including a front lounge that can be completely closed off, ideal as a kids' playroom or home office. At the heart of the home, the inviting kitchen with its charming server window connects seamlessly to the living and entertaining spaces. With electric cooking, a dishwasher, and generous storage, meal preparation is a breeze.

4 🏠 2 🚿 1 🚗

FOR SALE
Auction

AGENTS

Hannah Green
0422 381 055
hannah.green@ljkippax.com.au

Hannah Green
0422 381 055
hannah.green@ljkippax.com.au

AGENCY

LJ Hooker Kippax
(02) 6255 3888

All information contained therein is gathered from relevant third parties sources.
We cannot guarantee or give any warranty about the information provided.
Interested parties must rely solely on their own enquiries.

 **LJ Hooker**

The clever design flows effortlessly from the kitchen to the dining room and main lounge, opening through sliding doors to the enclosed patio, a space where great memories have been made and new ones are ready to be created.

The approved master bedroom extension offers a private haven with direct backyard access, a large built-in robe, and a neat ensuite. The remaining three bedrooms are well-sized and thoughtfully positioned around a central bathroom, complemented by a separate toilet and full-size laundry with external access.

Year-round comfort is assured with gas heating and upgraded insulation that meets rental standards, making it an easy investment choice too.

Outside, lush greenery and a recently landscaped frontage set the tone, while the backyard offers a blank canvas with plenty of room for children, pets, or future additions. The enclosed patio is perfect for relaxed gatherings, and the friendly, family-oriented street adds to the appeal.

The brief:

- 697sqm block
- 131sqm of living
- Charming server window from kitchen to living
- Two separate living areas
- Master bedroom with built-in robe, ensuite, and direct backyard access
- Upgraded insulation meeting rental standards
- Single carport
- 5-minute walk to Kippax Fair
- 10-minute drive to Belconnen Town Centre
- 20-minute commute to the city
- Excellent local schools within walking distance
- Enclosed patio

Why Higgins?

Higgins is one of Belconnen's most tightly held suburbs for a reason. It has a true community feel, with parks, schools, and shops nearby, yet it is tucked away from the city's hustle and bustle. This home is your opportunity to secure a spacious, adaptable property in a location families love, and to continue the story of a place that has been a treasured family haven for many years.

RATES/SIZE:

- Land size: 697sqm approx.
- House size: 131sqm approx.
- Rates: \$3,267 p.a. approx.
- Land Tax: \$5,932 p.a. approx.
- EER: 1.0

All information contained herein is gathered from sources we consider to be reliable. However, we cannot guarantee or give any warranty about the information provided. Interested parties must solely rely on their own enquiries.



MORE DETAILS

Property ID 1HSHF9U
Property Type House
House Size 131 m2
Land Area 697 m2
EER 1
Including Dishwasher
Built-in-Robes
Fully Fenced

Hannah Green 0422 381 055

Licensed Agent ACT & NSW | hannah.green@ljhkipax.com.au

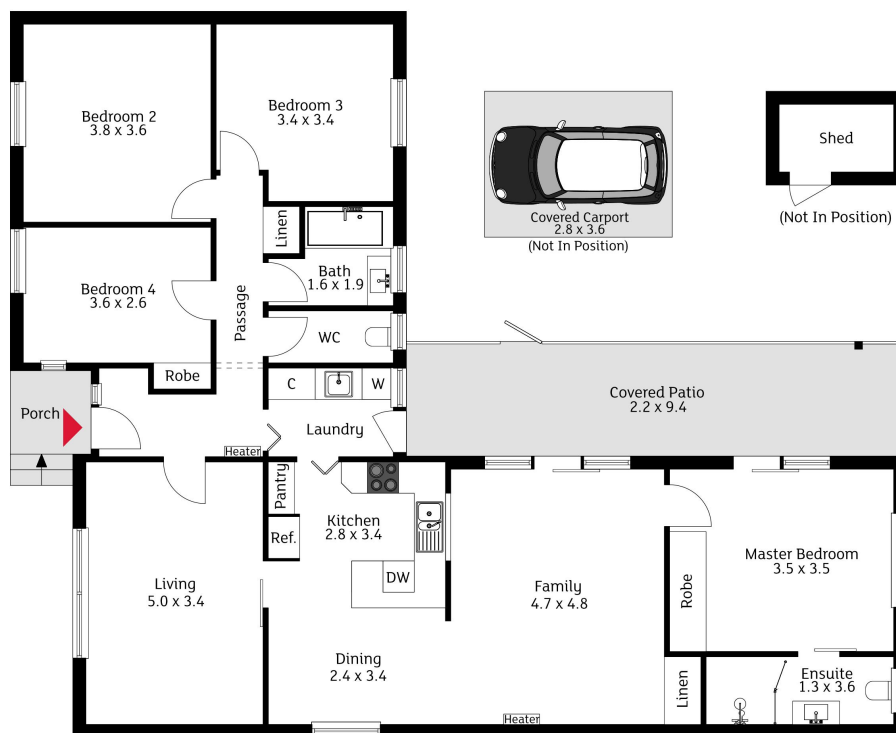
Hannah Green 0422 381 055

Licensed Agent ACT & NSW | hannah.green@ljhkipax.com.au

LJ Hooker Kippax (02) 6255 3888

Cnr Luke Street & Hardwick Crescent, HOLT ACT 2615
kippax.ljhooker.com.au | kippax@ljhooker.com.au





The floor plan is not to scale; measurements are indicative and in metres. Exterior elements are not in position. Plans should not be relied on. Interested parties should make and rely on their own enquiries.

36 Lutwyche Street, Higgins



All information contained therein is gathered from relevant third parties sources.
We cannot guarantee or give any warranty about the information provided.
Interested parties must rely solely on their own enquiries.

