

Hidden Valley, 89 Siena Ridge

Discover Your Dream Home in Hidden Valley!

Welcome to 89 Siena Ridge, Wallan - a delightful residence nestled in the serene suburb of Hidden Valley. This charming property is perfect for families or anyone looking for a peaceful retreat with modern amenities.

Property Highlights:

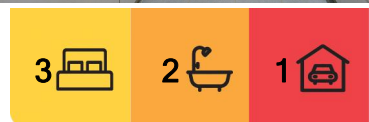
- 3 Spacious Bedrooms: Ideal for relaxation and comfort.
- 2 Modern Bathrooms: Featuring contemporary fixtures for your convenience.
- Single Garage: Secure parking with easy access.
- Generous Land Area: 481 sqm of outdoor space, perfect for gardening or entertaining.

Interior Features:

- Stylish Kitchen: Equipped with sleek cabinetry, gas cooktop, stone benches and ample counter space for all your culinary adventures.
- Open-Plan Living: Enjoy a bright and airy living area that seamlessly connects to the



Disclaimer: All information contained therein is gathered from relevant third parties sources. We cannot guarantee or give any warranty about the information provided. Interested parties must rely solely on their own enquiries.



For Sale
Please Call

View
ljhooker.com.au/7PKHJS

Contact
Sally Long
0477 437 281
sally.long@ljhooker.com.au

LJ Hooker Broadford | Kilmore
(03) 5784 2558

dining space.

- **Cosy Bedrooms:** Each bedroom is designed for comfort, with large windows allowing natural light to flood in.
- **Modern Bathrooms:** Featuring elegant finishes, ensuring a spa-like experience at home.

Outdoor Oasis:

- **Expansive Deck:** Perfect for summer barbecues or relaxing evenings with stunning views.
- **Lush Back Yard:** A well-maintained garden area, ideal for kids to play or for hosting friends and family.

Location Benefits:

- **Close to Amenities:** Just minutes away from Hidden Valley Golf and Country Club, schools, and Wallan shopping centre..
- **Easy Access to Transport:** Conveniently located near Wallan Train Station and Hume Highway for a hassle-free commute.

Why Choose Hidden Valley?

Hidden Valley offers a unique blend of tranquillity and convenience, making it a sought-after location for families and professionals alike. Enjoy the peace of suburban living while being just a short drive from the bustling city.

Don't miss out on this fantastic opportunity! Schedule a viewing today and experience the charm of 89 Siena Ridge for yourself. For more information or to arrange a private inspection, contact Sally Long on 0477 437 281 today!

More About this Property

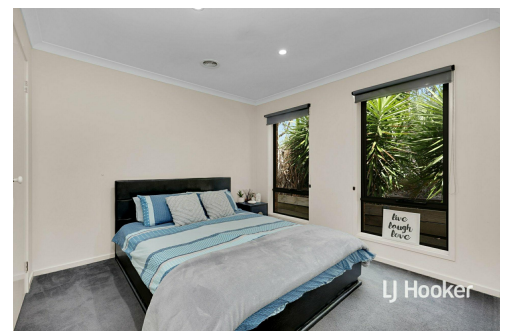
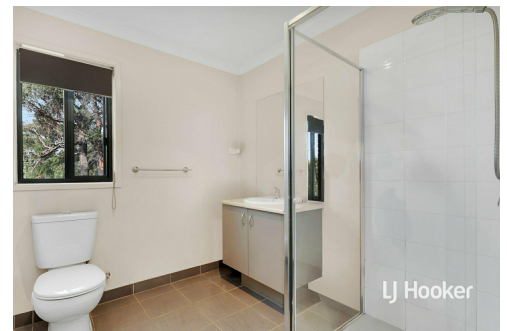
Property ID	7PKHJS
Property Type	House
Land Area	481 m2
Including	Ensuite Air Conditioning Ducted Heating Toilets (2) Deck Dishwasher Built-in-Robes Fully Fenced Remote Garage

Sally Long 0477 437 281

Licensed Real Estate Agent | sally.long@ljhooker.com.au

LJ Hooker Broadford | Kilmore (03) 5784 2558

1629 Broadford Wandong Road, BROADFORD VIC 3658
broadford.ljhooker.com.au | broadford@ljhooker.com.au



Disclaimer: All information contained therein is gathered from relevant third parties sources. We cannot guarantee or give any warranty about the information provided. Interested parties must rely solely on their own enquiries.

**LJ Hooker Broadford | Kilmore
(03) 5784 2558**