

Hidden Valley, 63 Siena Ridge

Expansive Family Living with Stunning Views

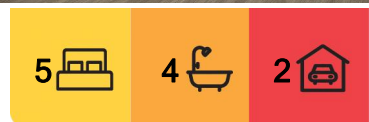
Nestled in a quiet cul-de-sac, this expansive home is perfect for a large or extended family, offering multiple living areas and a flexible floor plan to suit a variety of lifestyles.

Upon entry, you are welcomed into a grand formal living and dining area, enhanced by a striking raised ceiling and arched feature window. The centrally located kitchen is designed for both functionality and style, featuring an island bench, wall pantry, additional dry-store pantry, 900mm stainless steel stove and range-hood, dishwasher, and timber-look flooring.

Adjacent to the kitchen, the spacious meals area easily accommodates a large dining table, while the generous family/TV room provides the perfect space for relaxation.

The home offers five well-appointed bedrooms. The master suite and a second bedroom both include walk-in robes and private ensuites. Two additional bedrooms feature built-in robes and share a full family bathroom, while the fifth bedroom boasts its own ensuite and built-in storage. Upstairs, a dedicated study provides an ideal work-from-home space or homework area for the kids.

The lower level is an entertainer's dream, complete with a large rumpus room, kitchenette,



For Sale
\$790,000 - \$850,000

View
By Appointment

Contact
Sally Long
0477 437 281
sally.long@ljhooker.com.au



LJ Hooker Broadford | Kilmore
(03) 5784 2558

Disclaimer: All information contained therein is gathered from relevant third parties sources. We cannot guarantee or give any warranty about the information provided. Interested parties must rely solely on their own enquiries.

bathroom, and bar. This area seamlessly connects to a BBQ area and a beautifully landscaped back yard, where you can soak in breath-taking, uninterrupted views over the Hidden Valley Golf Course and beyond to Kinglake.

For convenience, the property includes a double garage, off-street parking, and side access to the back yard - perfect for trailer storage. The location is ideal, with minimal traffic and a school bus stop just a short stroll away on Valley Drive.

Hidden Valley remains one of the northern corridor's best-kept secrets, offering stunning panoramic views, vast open spaces, an elite 18-hole golf course, and a state-of-the-art clubhouse featuring a pool, gymnasium, and top-tier restaurant. Despite its peaceful setting, you're just minutes from Wallan's shops, schools, and amenities, within easy access to the Hume Freeway and V/Line train for a smooth commute to Melbourne's CBD. This is a rare opportunity to secure a spacious family home in a truly breath-taking location. Please contact Sally Long on 0477 437 281 for further information or to book an inspection.

More About this Property

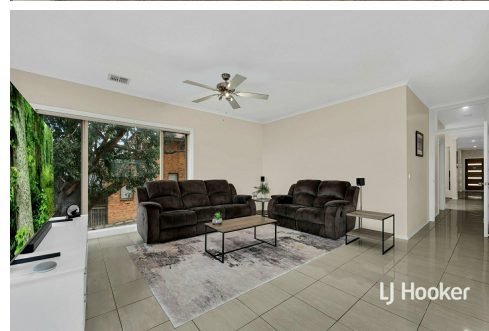
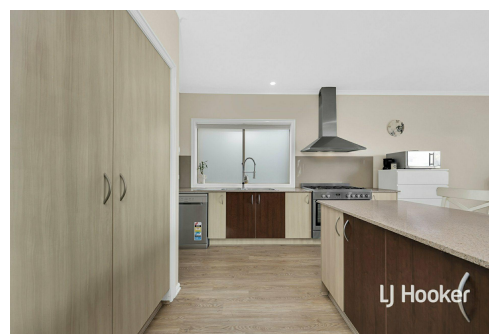
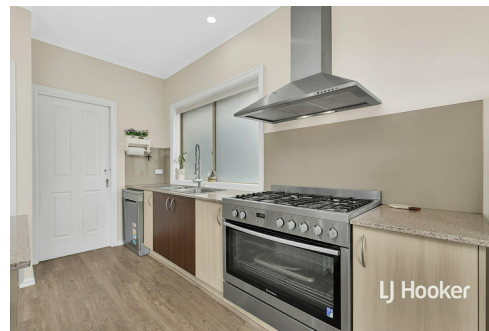
Property ID	7PHHJS
Property Type	House
Land Area	507.16 m2
Including	Ensuite Study Toilets (4) Balcony Deck Dishwasher Outdoor Entertaining Built-in-Robes Fully Fenced Remote Garage

Sally Long 0477 437 281

Licensed Real Estate Agent | sally.long@ljhooker.com.au

LJ Hooker Broadford | Kilmore (03) 5784 2558

1629 Broadford Wandong Road, BROADFORD VIC 3658
broadford.ljhooker.com.au | broadford@ljhooker.com.au



Disclaimer: All information contained therein is gathered from relevant third parties sources. We cannot guarantee or give any warranty about the information provided. Interested parties must rely solely on their own enquiries.

**LJ Hooker Broadford | Kilmore
(03) 5784 2558**

Ground Floor

First Floor

Lower Ground Floor



63 Siena Ridge, Hidden Valley

* Dimensions are approximate and for illustrative purposes only



LJ Hooker

LJ Hooker

LJ Hooker Broadford | Kilmore
(03) 5784 2558

Disclaimer: All information contained therein is gathered from relevant third parties sources. We cannot guarantee or give any warranty about the information provided. Interested parties must rely solely on their own enquiries.