



## Hewett, 7 Plover Court

### Heartwarming Family Home



Tucked away in a quiet, private street, this delightful 4-bedroom home is the perfect family retreat. From the moment you step inside, you'll feel at home with its warm, inviting atmosphere and thoughtful layout tailored for family living. The outdoor space is perfect for entertaining with multiple spots, a large undercover entertaining area, a pizza oven and a generous rumpus room/teenage retreat.

It is situated in the ever-popular suburb of Hewett on a generous 850m2 allotment conveniently located close to schools, public transport, Gawler Main Street and Main North Road.

Features Include:

- \* Generous master bedroom with built-in robes.
- \* Bedrooms 2, 3 and 4 with built-in robes.



**Disclaimer:** All information contained therein is gathered from relevant third parties sources. We cannot guarantee or give any warranty about the information provided. Interested parties must rely solely on their own enquiries.

**For Sale**  
\$679,000 - \$709,000

**View**  
[ljhooker.com.au/1UZYG54](http://ljhooker.com.au/1UZYG54)

**Contact**  
**Maigen Norman**  
0418 557 597  
[maigenn@ljhsales.com.au](mailto:maigenn@ljhsales.com.au)

**Jared Lund**  
0433 762 225  
[jaredl@ljhsales.com.au](mailto:jaredl@ljhsales.com.au)

**LJ Hooker Gawler | Barossa**  
**(08) 8522 3311**

- \* Kitchen with walk-in pantry, ample bench space, breakfast bar.
- \* Formal Lounge with dining area.
- \* Rumpus room/teenage retreat with split system.
- \* Large undercover entertaining area with ceiling fan.
- \* Verandah with pizza oven.
- \* Single carport.
- \* Large 6.6kw solar system.
- \* Ducted reverse cycle air conditioning.
- \* Multiple sheds.
- \* Ample car parking.

For further information, please contact Maigen Norman on 0418 557 597.

CT/ 5264/55

Year Built / 1997

Land size / 850m2

Internal Living/ 142m2 (approx.)

Council / Light Regional

All information provided has been obtained from sources we believe to be accurate, however, we cannot guarantee the information is accurate and we accept no liability for any errors or omissions (including but not limited to a property's land size, floor plans and size, building age and condition). Interested parties should make their own enquiries and obtain their own legal and financial advice. Should this property be scheduled for auction, the Vendor's Statement may be inspected at either of our two LJ Hooker Property Specialists Real Estate offices for 3 consecutive business days immediately preceding the auction and at the auction for 30 minutes before it starts. RLA 305453

## More About this Property

<b>Property ID</b>	1UZYG54
<b>Property Type</b>	House
<b>House Size</b>	142 m <sup>2</sup>
<b>Land Area</b>	850 m <sup>2</sup>
<b>Including</b>	Air Conditioning Ducted Cooling Ducted Heating Outdoor Entertaining Floorboards Built-in-Robes Secure Parking Solar Panels Water Tank

**Maigen Norman 0418 557 597**

Sales Specialist | maigenn@ljhsales.com.au

**Jared Lund 0433 762 225**

Managing Partner | Sales Specialist | jaredl@ljhsales.com.au

**LJ Hooker Gawler | Barossa (08) 8522 3311**

26 Adelaide Road, GAWLER SA 5118

gawlerbarossa.ljhooker.com.au | gawler@ljhsupport.com.au



LJ Hooker



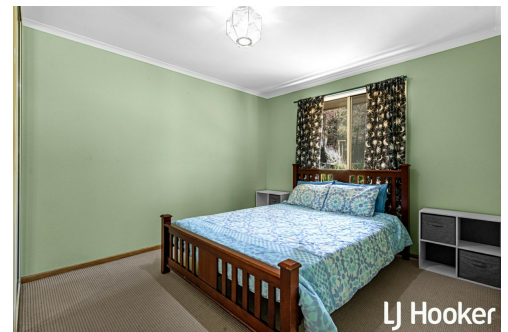
LJ Hooker



LJ Hooker



LJ Hooker



LJ Hooker



**LJ Hooker Gawler | Barossa  
(08) 8522 3311**

**Disclaimer:** All information contained therein is gathered from relevant third parties sources. We cannot guarantee or give any warranty about the information provided. Interested parties must rely solely on their own enquiries.

7 Plover Court,  
**HEWETT**



Living:	124.00SQ.M
Verandah/Carport:	66.00SQ.M
Shed/Rumous:	57.00SQ.M
<b>TOTAL:</b>	<b>247.00SQ.M</b>

This Drawing is for illustration purposes only. All measurements are internal and approximate. Details intended to be relied upon should be independently verified.