



## Hewett, 51 Murray Road

Your family home awaits!

This spacious family home is set on a generous 800sqm approx. allotment in the highly sought-after suburb of Hewett, offering a perfect blend of convenience and comfort. With a large low-maintenance yard, undercover entertaining area, and plenty of space for the whole family to enjoy, this property is ideal for both relaxed living and entertaining.

Located just a short walk from Gawler Town Centre, it offers easy access to shops, cafes, and local amenities. It's also only a 40-minute drive from the Adelaide CBD, making it perfect for commuters. Zoned to the well-regarded Hewett Primary School and close to Xavier College, with the Barossa Valley's wineries and attractions just a short drive away, this home offers a lifestyle combining accessibility and opportunity for years to come.

Features include:

\* Main bedroom with split system, bay windows, ensuite and walk-in robe.



**For Sale**

\$749,000 - \$799,000

**View**

[ljhooker.com.au/1V49G54](http://ljhooker.com.au/1V49G54)

**Contact**

**Maigen Norman**

0418 557 597

[maigenn@ljhsales.com.au](mailto:maigenn@ljhsales.com.au)

**Jared Lund**

0433 762 225

[jaredl@ljhsales.com.au](mailto:jaredl@ljhsales.com.au)



**LJ Hooker Gawler | Barossa**  
**(08) 8522 3311**

**Disclaimer:** All information contained therein is gathered from relevant third parties sources.

We cannot guarantee or give any warranty about the information provided. Interested parties must rely solely on their own enquiries.

- \* Bedrooms 3, 4 and 5 all with built-in robes.
- \* Kitchen equipped with stainless steel appliances, gas cooktop and breakfast bar.
- \* Freshly painted throughout.
- \* Open plan meals and living area.
- \* Second lounge.
- \* Main living with fireplace.
- \* Evaporative cooling throughout.
- \* Double garage with rear access.
- \* Large undercover entertaining area.
- \* Manicured rear yard.
- \* Shed with concrete floor and power.

For further enquiries, please contact Maigen Norman on 0418 557 597.

Year Built / 2003

Land Size / 800m2 (approx.)

Internal Living 204m2 (approx.)

Council / Light Regional

All information provided has been obtained from sources we believe to be accurate, however, we cannot guarantee the information is accurate and we accept no liability for any errors or omissions (including but not limited to a property's land size, floor plans and size, building age and condition). Interested parties should make their own enquiries and obtain their own legal and financial advice. Should this property be scheduled for auction, the Vendor's Statement may be inspected at either of our two LJ Hooker Property Specialists Real Estate offices for 3 consecutive business days immediately preceding the auction and at the auction for 30 minutes before it starts. RLA 305453

## More About this Property

<b>Property ID</b>	1V49G54
<b>Property Type</b>	House
<b>House Size</b>	204 m <sup>2</sup>
<b>Land Area</b>	800 m <sup>2</sup>
<b>Including</b>	Air Conditioning Ducted Cooling Evaporative Cooling Dishwasher Outdoor Entertaining Built-in-Robes Secure Parking

**Maigen Norman 0418 557 597**

Sales Specialist | maigenn@ljhsales.com.au

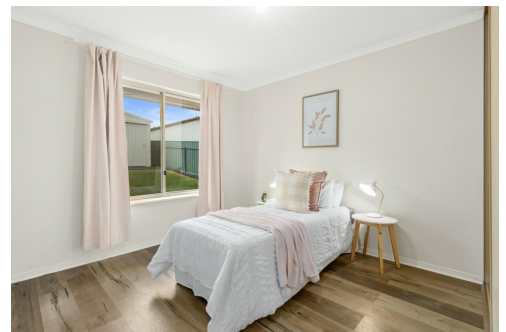
**Jared Lund 0433 762 225**

Managing Partner | Sales Specialist | jaredl@ljhsales.com.au

**LJ Hooker Gawler | Barossa (08) 8522 3311**

26 Adelaide Road, GAWLER SA 5118

gawlerbarossa.ljhooker.com.au | gawler@ljhsupport.com.au



**LJ Hooker Gawler | Barossa  
(08) 8522 3311**

**Disclaimer:** All information contained therein is gathered from relevant third parties sources. We cannot guarantee or give any warranty about the information provided. Interested parties must rely solely on their own enquiries.



Living:	197.70SQ.M
Carport:	33.06SQ.M
Verandah/Decking:	65.50SQ.M
Pergola/Shed:	47.10SQ.M
<b>TOTAL:</b>	<b>343.36SQ.M</b>

This Drawing is for illustration purposes only. All measurements are internal and approximate. Details intended to be relied upon should be independently verified.