



25/1 Doyalson Place, Helensvale

2  1  1 

Immaculate Single-Level Villa... Easy-Care Lifestyle!!

Discover the perfect blend of comfort, convenience, and low-maintenance living in this beautifully presented single level 2 bedroom villa. Set within a tightly held and impeccably maintained complex, this home is ideal for downsizers, first-home buyers, or investors looking for a quality property in a prime location.

Step inside to a bright and welcoming open-plan living area that connects seamlessly to the generous kitchen, complete with a large island bench and effortless access to the outdoor entertaining space - perfect for hosting family and friends. The master bedroom overlooks the private courtyard and enjoys convenient access to the two-way bathroom, offering that desirable ensuite feel. The second bedroom is equally well appointed, featuring a built-in robe and a ceiling fan for year-round comfort.

Outside, the private covered courtyard creates the perfect setting for entertaining or just relaxing. A single remote garage with internal laundry, along with an additional parking space, adds to the everyday convenience.

Features you'll love:

All information contained therein is gathered from relevant third parties sources. We cannot guarantee or give any warranty about the information provided. Interested parties must rely solely on their own enquiries.

FOR SALE
Offers Over \$779,000

AGENTS

Chris Pittaway
0410 229 244
cpittaway@ljhgc.com.au

Daniel Campbell
0412 777 212
dcampbell@ljhgc.com.au

AGENCY

LJ Hooker Nerang
(07) 5581 4422

 **LJ Hooker**

- Single-level, low-maintenance townhouse
- Spacious open-plan living with air conditioning
- Two bedrooms with built-in robes, ceiling fans and air conditioning in the master
- Two-way main bathroom acting as an ensuite to the master
- Well-appointed kitchen with island bench overlooking living and dining
- Single lock-up garage with laundry + extra allocated parking space
- Private courtyard with generous deck
- A 5kw solar power system will also help with those increasing electricity bills
- Low body corporate fees: approx. \$63/week

Location is another standout. You're just a stroll to Helensvale Plaza, including Coles and a variety of local shops. Westfield Helensvale is only a short walk, offering a wide range of retail and hospitality options. You are also close to Helensvale Train Station providing heavy and light rail options for easy access to everything the Gold Coast has to offer. The hugely popular Club Helensvale (Bowls and entertainment Club) is also a short stroll away from everything you need truly is at your fingertips.

This is an exceptional opportunity to secure a quality property in one of Helensvale most sought-after pockets. Don't miss out!

Disclaimer: All information contained herewith, including but not limited to the general property description, images, floorplans, figures, price and address, has been provided to Shane Colquhoun Pty Limited and CLP Realty Pty Limited by third parties. We have obtained this information from sources that we believe to be reliable; however, we cannot guarantee the accuracy and or completeness of this information. The information contained herewith should not be relied upon as being true and correct. You should make independent inquiries and seek your own independent advice in respect of this property or any property on this website.

MORE DETAILS

Property ID 5HGAF41
Property Type Villa
House Size 165 m2
Including Air Conditioning
Outdoor Entertaining
Built-in-Robes
Secure Parking
Solar Panels

Chris Pittaway 0410 229 244

L.R.E.A | Independent Contractor | cpittaway@ljhgc.com.au

Daniel Campbell 0412 777 212

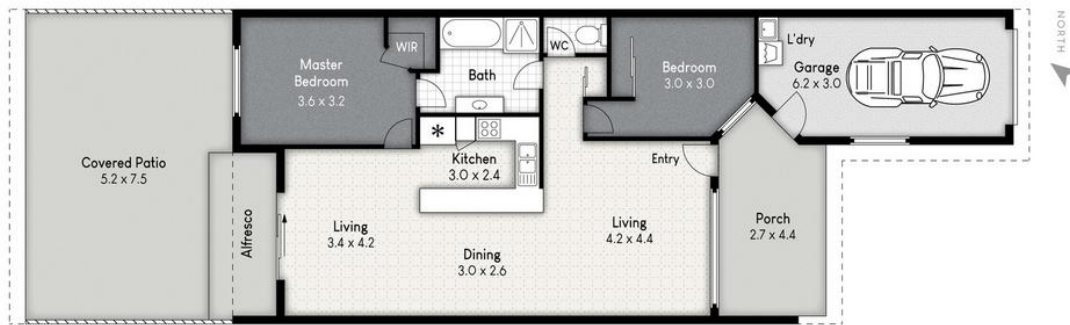
Sales Specialist to Chris Pittaway Independent Contractor |
dcampbell@ljhgc.com.au

LJ Hooker Nerang (07) 5581 4422

2-4 New Street, NERANG QLD 4211

nerang.ljhooker.com.au | nerang@ljhgc.com.au





25/1 DOYALSON PL, HELENSVALE



Internal: 109m² | External: 56m² | Total: 165m²

Whilst every attempt has been made to ensure the accuracy of the floor plan contained here, measurements of doors, windows, rooms and any other item are approximate and no responsibility is taken for any error, omission, or misstatement. This plan is for illustrative purposes only and should only be used as such by any prospective purchaser.

