



Helensvale, 3/10 Careel Close

Discover Your Dream Townhouse!



Step into this modern and spacious townhouse, a true gem on the market that's sure to captivate you.

Start the new year in style by making this incredible property your new home, or consider adding it to your investment portfolio.

Nestled in a charming community of just 8 homes with low body corporate fees, this property won't last long.

Enjoy prime location that is conveniently close to all amenities, with the added benefit of having neighbours on only one side.

Act fast to seize this fantastic opportunity!

For Sale

Offers Above \$700,000

View

ljhooker.com.au/35BWGMK

Contact

Adam Hope

0417 654 153

adam.hope@ljhteam.com.au

LJ Hooker

Disclaimer: All information contained therein is gathered from relevant third parties sources.

We cannot guarantee or give any warranty about the information provided. Interested parties must rely solely on their own enquiries.

LJ Hooker Pacific Pines | Helensvale
(07) 5573 2099

Upper Level Features:

- Inviting Family Room: A warm and welcoming space for family gatherings and relaxation
- Master Bedroom: Featuring a spacious walk-in closet and a luxurious ensuite bathroom
- Two Generous Bedrooms: Both equipped with built-in closets, providing ample storage
- Study Nook: A perfect spot for work or study, ideal for today's remote lifestyle
- Well-Appointed Bathroom: Complete with a bathtub and a separate toilet for added privacy
- Linen Press: For extra storage, keeping your home organised and clutter-free



Lower Level Highlights:

- Spacious Open-Plan living Area: Designed for modern living, this area flows seamlessly into the kitchen
- Modern Kitchen: Equipped with a walk-in pantry, perfect for all your culinary needs
- Double Lock-Up Garage: Offering secure parking and additional storage space
- Air Conditioning: Ensuring year-round comfort, no matter the season
- Private Fenced Courtyard: A serene outdoor space, perfect for relaxation or entertaining guests



Located near shops, parks, schools, public transport, and major highways, this townhouse offers everything you need just moments away.

With low body corp fees of approximately \$85 per week, this is an excellent investment opportunity.



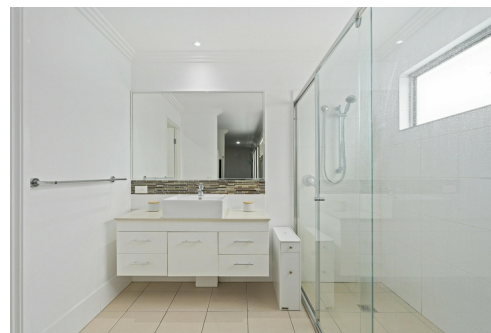
This property is perfect for first-time homebuyers, downsizers, investors, or anyone seeking remarkable residence in a fantastic location.

Don't miss your chance - attend our scheduled open homes and be prepared to be impressed!!

Your dream home awaits - Make it yours today!

Disclaimer:

All information contained is gathered from relevant third party sources. We cannot guarantee or give any warranty about the information provided. Interested parties must rely solely on their own enquiries.



More About this Property

Property ID	35BWGMK
Property Type	Townhouse

Adam Hope 0417 654 153

Principal | Director | Licensee | adam.hope@ljhteam.com.au

LJ Hooker Pacific Pines | Helensvale (07) 5573 2099

8 Discovery Drive, HELENSVALE QLD 4212

pacificpines-helensvale.ljhooker.com.au | admin@ljhteam.com.au



**LJ Hooker Pacific Pines | Helensvale
(07) 5573 2099**

Disclaimer: All information contained therein is gathered from relevant third parties sources. We cannot guarantee or give any warranty about the information provided. Interested parties must rely solely on their own enquiries.



3/10 CAREEL CLOSE, HELENSVALE

3 2 2

Internal: 168m² | External: 11m² | Total: 179m²

Whilst every attempt has been made to ensure the accuracy of the floor plan contained here, measurements of doors, windows, rooms and any other item are approximate and no responsibility is taken for any error, omission, or misstatement. This plan is for illustrative purposes only and should only be used as such by any prospective purchaser.

