



16/1 Doyalson Place, Helensvale

## Stylish Single-Level Villa in Prime Walk-To-Everything Location

Tucked away in a quiet, well-cared-for complex, this impressive two-bedroom villa delivers easy living in a location that truly has it all. Whether you're a first home buyer, downsizer, or adding to your portfolio, this is a smart move in one of Helensvale's most convenient pockets.

Designed for effortless day-to-day living, the home centers around a spacious open-plan layout that feels light, airy and inviting. The modern kitchen takes pride of place, featuring generous stone benchtops that doubles as both prep space and a casual gathering hub. From here, sliding doors connect you to a private covered outdoor area - ideal for weekend barbecues or quiet morning coffees surrounded by greenery.

Both bedrooms are thoughtfully positioned, with built-in robes and ceiling fans, while the master enjoys direct access to the two-way bathroom for added privacy and practicality. Plantation shutters add a stylish finish and enhance natural light throughout.

2 1 1

### FOR SALE

Offers Over \$790,000

### VIEW

Sat 21st Feb @ 10:30AM - 11:00AM

### AGENTS

Daniel Campbell  
0412 777 212  
dcampbell@ljhg.com.au

Chris Pittaway  
0410 229 244  
cpittaway@ljhg.com.au

### AGENCY

LJ Hooker Nerang  
(07) 5581 4422

All information contained therein is gathered from relevant third parties sources.  
We cannot guarantee or give any warranty about the information provided.  
Interested parties must rely solely on their own enquiries.



Practicality hasn't been overlooked, with a remote single lock-up garage incorporating the laundry, plus an additional dedicated car space right outside the property - a rare and valuable bonus.

Why this one stands out:

- Quiet position within a tightly held complex
- Functional single-level design
- Spacious air-conditioned open plan living, dining, kitchen area
- Modern kitchen featuring stone benchtops
- Seamless indoor-outdoor connection
- Two generous bedrooms with built-ins
- Private covered entertaining area
- Single remote garage + extra allocated parking
- Low body corporate approx. \$63 per week

The lifestyle on offer here is exceptional. Walk to everyday essentials at Helensvale Plaza, including Coles, or explore the extensive retail, dining and entertainment options at Westfield Helensvale. Commuters will appreciate the convenience of Helensvale railway station, connecting you via heavy rail and light rail across the Gold Coast and into Brisbane. For social outings, Club Helensvale is just moments away.

Opportunities in this location don't last long. Secure a low-maintenance home with lifestyle appeal and strong future potential.

Disclaimer: All information contained herewith, including but not limited to the general property description, images, floorplans, figures, price and address, has been provided to Shane Colquhoun Pty Limited and CLP Realty Pty Limited by third parties. We have obtained this information from sources that we believe to be reliable; however, we cannot guarantee the accuracy and or completeness of this information. The information contained herewith should not be relied upon as being true and correct. You should make independent inquiries and seek your own independent advice in respect of this property or any property on this website.

## MORE DETAILS

Property ID	5HQBF41
Property Type	Townhouse
Including	Toilets (1)
	Built-in-Robes
	Remote Garage

### Daniel Campbell 0412 777 212

Sales Specialist to Chris Pittaway Independent Contractor |  
dcampbell@ljhgc.com.au

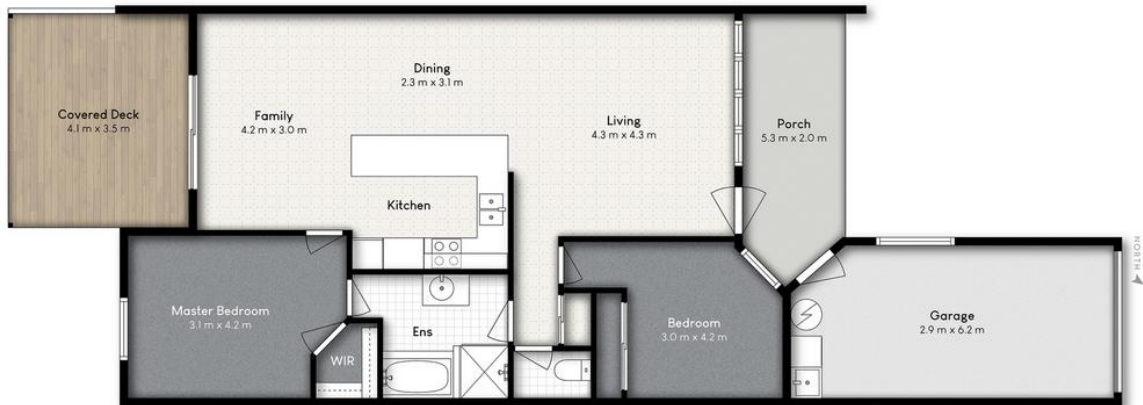
### Chris Pittaway 0410 229 244

L.R.E.A | Independent Contractor | cpittaway@ljhgc.com.au

### LJ Hooker Nerang (07) 5581 4422

2-4 New Street, NERANG QLD 4211  
nerang.ljhooker.com.au | nerang@ljhgc.com.au





16/1 DOYALSON PLACE, HELENSVALE

 2  1  1

Internal: 111m<sup>2</sup> | External: 24m<sup>2</sup> | Total: 135m<sup>2</sup>

Whilst every attempt has been made to ensure the accuracy of the floor plan contained here, measurements of doors, windows, rooms and any other item are approximate and no responsibility is taken for any error, omission, or misstatement. This plan is for illustrative purposes only and should only be used as such by any prospective purchaser.

