



7 Timberlea Court, Helensvale

## OFF-MARKET OPPORTUNITY — RIVERDOWNS ACREAGE

First time offered to the market in over 26 years, this rare Riverdowns acreage property presents an incredible opportunity for families seeking space, lifestyle, and privacy.

Situated on a sprawling 4,511m<sup>2</sup> block, this home offers the best of acreage living with all the convenience of Helensvale at your doorstep.

### ? Property Features:

- Four bedrooms plus study, including an en-suited master suite
- Multiple living areas designed for family comfort and entertaining
- Very large pool, perfect for summer days and gatherings
- Untouched, expansive backyard —a blank canvas for your dream lifestyle
- Reasonable side access on both sides, ideal for boats, caravans, or trailers
- Double garage with internal access
- Multiple access driveway for convenience and extra parking

This property combines lifestyle, space, and location —set within one of Helensvale's most sought-after acreage estates. With the chance

5 2 2

### FOR SALE

Offers Over \$1,600,000

### AGENTS

Aaron Dobson  
0406 976 482  
adobson@ljhteam.com.au

### AGENCY

LJ Hooker Pacific Pines | Helensvale  
(07) 5573 2099

All information contained therein is gathered from relevant third parties sources.  
We cannot guarantee or give any warranty about the information provided.  
Interested parties must rely solely on their own enquiries.



to secure a home that has been tightly held for more than two decades, opportunities like this do not come around often.

**Location Highlights:**

Close to Helensvale schools, shopping, cafes, and transport  
Easy M1 access to Brisbane and the Gold Coast beaches  
Peaceful, private setting in a prestigious enclave

**Disclaimer:**

All information contained is gathered from relevant third party sources. We cannot guarantee or give any warranty about the information provided. Interested parties must rely solely on their own enquiries.

**MORE DETAILS**

Property ID	35T6GMK
Property Type	House
Land Area	4511 m2

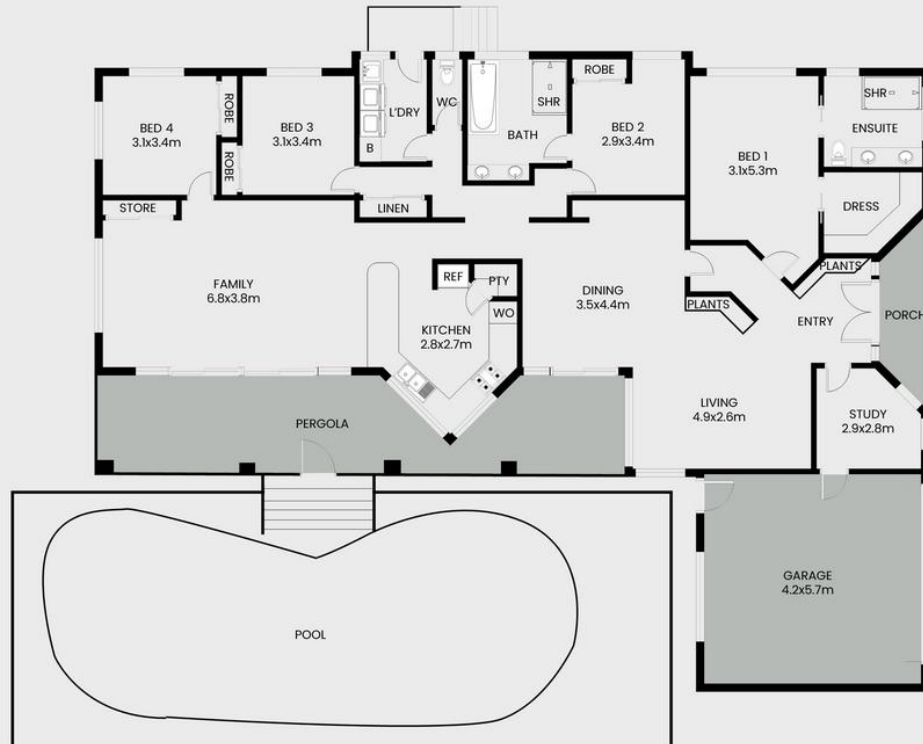
**Aaron Dobson 0406 976 482**

Sales Specialist | [adobson@ljhteam.com.au](mailto:adobson@ljhteam.com.au)

**LJ Hooker Pacific Pines | Helensvale (07) 5573 2099**

8 Discovery Drive, HELENSVALE QLD 4212  
[pacificpines-helensvale.ljhooker.com.au](mailto:pacificpines-helensvale.ljhooker.com.au) | [admin@ljhteam.com.au](mailto:admin@ljhteam.com.au)

## 7 Timberlea Court, Helensvale



 **LJ Hooker**

This floor plan including furniture, fixture measurements and dimensions are approximate and for illustrative purposes only. BoxBrownie.com gives no guarantee, warranty or representation as to the accuracy and layout. All enquiries must be directed to the agent, vendor or party representing this floor plan.