



Helensvale, 7 Gatton Court

NO SHOWINGS THIS WEEKEND

We have inspections arranged with the tenants for Thursday and Saturday, call now for times and to book your inspection.

You won't want to miss this great property in one of Helensvale's nicest courts, walking distance to the Primary School, Helensvale Plaza and close to Westfield Shopping Centre and the rail stations.

Features include:

- *566m2 fully fenced block
- *Quiet cu-de-sac location
- *Access at end of court to large reserve and safe walk to the Primary School
- *A short walk to access the walkway to the Helensvale Plaza
- *20 minute walk to the rail station (re Goggle maps)

LJ Hooker

Disclaimer: All information contained therein is gathered from relevant third parties sources. We cannot guarantee or give any warranty about the information provided. Interested parties must rely solely on their own enquiries.

3 2 2

For Sale

Buyers Above \$775,000

View

ljhooker.com.au/18AYFKK

Contact

Mark Worthington

0411 874 168

markworthington@ljhteam.com.au

LJ Hooker Helensvale
(07) 5573 2099

- *Open plan air-conditioned living area
- *Tiled family and dining area
- *Modern kitchen with gas hotplate and dishwasher
- *Master bedroom with renovated ensuite opening to an outside parents retreat area
- *2nd and 3rd bedroom both have built-in wardrobes and ceiling fans
- *Modern main bathroom with shower, bath and separate toilet
- *Internal access from the double garage
- *The yard is fully fenced offering plenty of room for kids and pets to play safely
- *Access from the court to acres of parkland ideal for dog exercising
- *Commuters have easy access to the M1 or can relax and take the train to Brisbane
- *Close to the light rail station which will take you to Griffith University, Gold Coast University Hospital and the coastal suburbs as far a Broadbeach and Pacific Fair Shopping Centre

This is a great opportunity to secure a property in one of Helensvale's best locations with everything in walking distance. At this price point it is essential that you book your inspection to avoid missing out.

NB: The tenant is currently on a periodic lease. Their furniture and possessions have been digitally removed from the internal photos

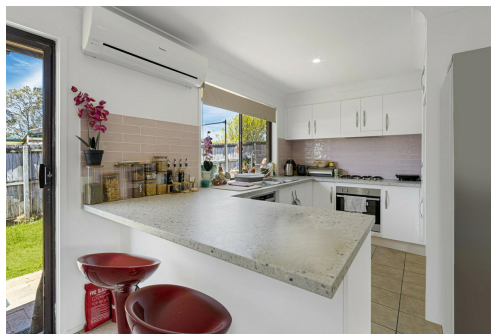
Disclaimer:
All information contained is gathered from relevant third party sources. We cannot guarantee or give any warranty about the information provided. Interested parties must rely solely on their own enquiries.

More About this Property

Property ID	18AYFKK
Property Type	House
Land Area	566 m²
Including	Built-in-Robes

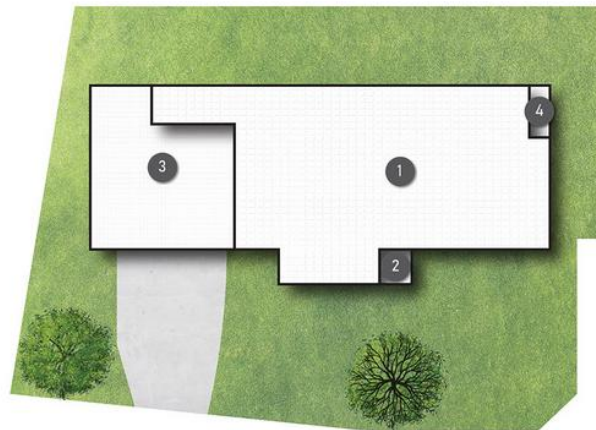
Mark Worthington
Sales Specialist | markworthington@ljhteam.com.au

LJ Hooker Helensvale (07) 5573 2099
8 Discovery Drive, HELENSVALE QLD 4212
helensvale.ljhooker.com.au | helensvale@ljhgc.com.au



Disclaimer: All information contained therein is gathered from relevant third parties sources. We cannot guarantee or give any warranty about the information provided. Interested parties must rely solely on their own enquiries.

LJ Hooker Helensvale
(07) 5573 2099



SITE PLAN

LEGEND

- 1 RESIDENCE
- 2 PORCH
- 3 GARAGE
- 4 PATIO



FLOOR PLAN



7 Gatton Court HELENSVALE

3 Beds | 2 Bathrooms | 2 Car Spaces | 157m²



All dimensions are approximate; they are subject to errors and inaccuracies and no liability will be accepted. Plans are shown for marketing purposes only.

LJ Hooker

LJ Hooker Helensvale
(07) 5573 2099

Disclaimer: All information contained therein is gathered from relevant third parties sources. We cannot guarantee or give any warranty about the information provided. Interested parties must rely solely on their own enquiries.