



Helensvale, 49 Ashford Road

Family Home with Huge Shed & Reserve Backdrop!

Perfectly positioned in the heart of Helensvale, this versatile property offers an incredible opportunity for families, hobbyists, or tradies needing extra space.

Set on a generous 800m² block backing onto a peaceful reserve, this home combines privacy, convenience, and lifestyle.

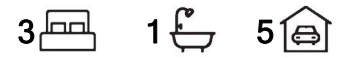
Featuring three well-sized bedrooms, 1.5 bathrooms, and 5 parking spaces (including a 12m garage/shed holding 4 and an additional carport,), this property offers endless potential.

Whether you need room for your vehicles, workshop space, or a home business setup, this home has it all!

Enjoy the benefits of a spacious backyard, perfect for kids, pets, and entertaining, with

LJ Hooker

Disclaimer: All information contained therein is gathered from relevant third parties sources. We cannot guarantee or give any warranty about the information provided. Interested parties must rely solely on their own enquiries.



For Sale
Just Listed

View
ljhooker.com.au/35GEGMK

Contact
Adam Hope
0417 654 153
adam.hope@ljhteam.com.au

Aaron Dobson
0406 976 482
adobson@ljhteam.com.au

LJ Hooker Pacific Pines | Helensvale
(07) 5573 2099

direct access to nature right at your doorstep.

Located in central Helensvale, this home is just a short stroll to Helensvale State School and Helensvale State High School, as well as Westfield Helensvale, Helensvale Plaza, restaurants, and both light and heavy rail stations-making commuting a breeze! Plus, with the Gold Coast's stunning beaches and attractions just a short drive away, you'll have the best of both worlds.

Disclaimer:

All information contained is gathered from relevant third party sources. We cannot guarantee or give any warranty about the information provided. Interested parties must rely solely on their own enquiries.

More About this Property

Property ID	35GEGMK
Property Type	House
Land Area	800 m2

Adam Hope 0417 654 153

Owner | Principal | Sales Director | adam.hope@ljhteam.com.au

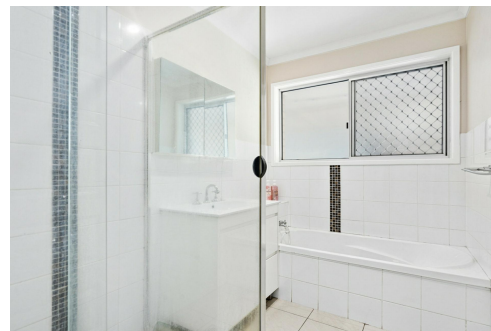
Aaron Dobson 0406 976 482

Sales Specialist | adobson@ljhteam.com.au

LJ Hooker Pacific Pines | Helensvale (07) 5573 2099

8 Discovery Drive, HELENSVALE QLD 4212

pacificpines-helensvale.ljhooker.com.au | admin@ljhteam.com.au



LJ Hooker

Disclaimer: All information contained therein is gathered from relevant third parties sources. We cannot guarantee or give any warranty about the information provided. Interested parties must rely solely on their own enquiries.

**LJ Hooker Pacific Pines | Helensvale
(07) 5573 2099**



49 ASHFORD ROAD, HELENSVALE

3 1 4

Internal: 122m² | External: 103m² | Total: 225m²

Whilst every attempt has been made to ensure the accuracy of the floor plan contained here, measurements of doors, windows, rooms and any other item are approximate and no responsibility is taken for any error, omission, or misstatement. This plan is for illustrative purposes only and should only be used as such by any prospective purchaser.

