



113 River Links Boulevard, Helensvale

A Landmark Main River Estate of Rare Scale, Presence and Prestige

Some homes are defined by their design. Others by their position. This is one where both exist in alignment.

Set at the end of a tightly held cul-de-sac, this main river estate commands one of River Links' most significant landholdings - where over 80 metres of waterfrontage meets an expansive, level 1835m² parcel, creating a sense of scale that is both immediate and enduring.

From the moment of arrival, there is a deliberate sense of balance. A striking yin and yang motif anchors the driveway - a subtle reflection of the home itself, where architecture and landscape exist in equal measure. Built form and open space, structure and stillness, each given room to breathe.

Completed in 2019, the residence reveals itself through a grand foyer framed by a soaring 6-metre* void and floor-to-ceiling glazing, drawing natural light deep into the interiors. Contemporary in its execution, the home is defined by clean architectural lines, refined finishes and a considered layout that prioritises both entertaining and liveability.

6 🏠 6 🚗 3 🚗

AUCTION

Fri 8th May @ 5:00PM

VIEW

Sat 18th Apr @ 9:00AM - 9:30AM

AGENTS

Eileen Chen
0452 352 547
eileen.chen@ljhbeenleigh.com.au

Benjamin Waite
0431 265 700
benjamin.waite@ljhbeenleigh.com.au

AGENCY

LJ Hooker Beenleigh
(07) 3807 7900

All information contained therein is gathered from relevant third parties sources. We cannot guarantee or give any warranty about the information provided. Interested parties must rely solely on their own enquiries.

 **LJ Hooker**

Living spaces are layered rather than confined; from a formal waterfront lounge to expansive open-plan living and dining - all oriented to capture water, light and horizon. A statement kitchen with gas and induction cooking is supported by a fully equipped butler's pantry, delivering both visual impact and practical function.

Beyond, the transition is effortless. An infinity-edge pool extends toward the river, while a private powered pontoon offers direct main river access. The surrounding lawn meeting the riverfront beach edge - wide, level and uninterrupted - is a defining feature, rarely seen on main river, and one that enhances both privacy and long-term appeal.

Accommodation is generous and versatile, with six king-sized bedroom suites, each with its own ensuite and walk-in robe. A separate wing, complete with its own access and adjoining study, provides flexibility for extended family, guest quarters, au pair or live-in support - a thoughtful inclusion that complements the scale of the home.

What ultimately sets this property apart is not just its design, but the land it holds and the way it has been composed. A balance of form and openness. A connection between structure and setting. A residence where scale, proportion and position come together with quiet confidence.

The Highlights:

- ~1835m²; main river landholding
- 80m+ waterfrontage along Coomera River
- Powered pontoon with deep-water access
- Contemporary residence completed in 2019
- Grand foyer with ~6m double-height void and floor-to-ceiling glazing
- Formal waterfront lounge + expansive open-plan living and dining
- Statement kitchen with gas + induction cooking
- Full butler's pantry with additional appliances
- Covered alfresco with outdoor bar and seamless connection
- Infinity-edge pool overlooking the main river
- Five king-sized bedroom suites, all with ensuites and walk-in robes
- Master suite upstairs with walk-in robe, private balcony and ensuite bath with river and hinterland backdrop
- Flexible separate wing with private access + adjoining study
- Expansive level waterfront lawn sprawling across ~700sqm
- Secure gated entry with feature yin & yang driveway design
- Triple garage (separate double + single) + secured driveway to accommodate up to 6 cars
- Positioned in a quiet cul-de-sac within River Links Estate
- No body corporate fees

River Links Estate - The Location

River Links is one of the northern Gold Coast's most tightly held waterfront addresses - a place where scale, water and privacy come together with quiet confidence.

Defined by larger landholdings and deep-water access to the Broadwater, the estate offers a lifestyle shaped by boating and open space, yet remains moments from Sanctuary Cove, Hope Island Marina, championship golf and key amenities. It is this balance of seclusion and connectivity that continues to draw a discerning, prestige market.

A home defined by scale, balance and presence.
Experience the home in person, contact Eileen Chen and Benjamin Waite to arrange your private viewing.

Auction Onsite - Thursday 8 May at 5:00pm

Disclaimer:

Whilst every effort has been made to ensure the accuracy of the information contained in this marketing material, no warranty or representation is given by the agent or seller as to its correctness. All interested parties should make their own enquiries, undertake independent due diligence and seek professional advice to verify the information provided.

To the extent of any inconsistency between this marketing material and the Form 2 Seller Disclosure Statement, the Form 2 will prevail.

If this property is being sold by auction in Queensland, a price guide cannot be provided. Any price range filtered and displayed online may have been automatically generated for functionality purposes only.

MORE DETAILS

Property ID	1XJ5GRF
Property Type	House
House Size	681 m2
Land Area	1835 m2

Eileen Chen 0452 352 547

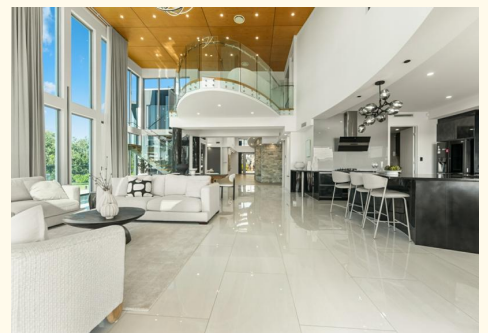
Sales and Marketing Specialist | eileen.chen@ljhbeenleigh.com.au

Benjamin Waite 0431 265 700

Principal & Licenced Real Estate Agent | benjamin.waite@ljhbeenleigh.com.au

LJ Hooker Beenleigh (07) 3807 7900

14-16 James Street, BEENLEIGH QLD 4207
beenleigh.ljhooker.com.au | bs0@ljhbeenleigh.com.au





113 RIVER LINKS BLVD, HELENSVALE

 6
 6
 3

576 m²
Internal
 105 m²
External

681 m²
Total

EILEEN CHEN - 0452 352 547
 BENJAMIN WAITE - 0431 265 700

Whilst every attempt has been made to ensure the accuracy of the floor plan contained here, measurements of doors, windows, rooms and any other item are approximate and no responsibility is taken for any error, omission, or misstatement. This plan is for illustrative purposes only and should only be used as such by any prospective purchaser.