

## Helensvale, 23/24 Cannington Place

Renovated and Ready!

2  1  1 

This duplex-style unit has been refreshed with renovated bathroom and kitchen spaces, offering comfort and convenience in a spacious, open-plan design. Located in an elevated, non-gated complex in central Helensvale, it's within walking distance to shops, a bus stop, and the Primary School.

### Features Include:

- \*In a secluded leafy section of this pet friendly complex of just 24 units
- \*Enjoying cool breezes and coastal glimpses from the elevated location
- \*Open-plan air-conditioned living with dining area
- \*Timber laminate flooring
- \*Spacious modern kitchen with dishwasher, only 12 months old
- \*Relax on your private deck in a tranquil setting
- \*Large master bedroom with two built-in robes
- \*Generous second bedroom with built-in robe

### For Sale

Buyers Above \$625,000

### View

[ljhooker.com.au/35HFGMK](http://ljhooker.com.au/35HFGMK)

### Contact

**Mark Worthington**

0411 874 168

[markworthington@ljhteam.com.au](mailto:markworthington@ljhteam.com.au)

# LJ Hooker

**Disclaimer:** All information contained therein is gathered from relevant third parties sources.

We cannot guarantee or give any warranty about the information provided. Interested parties must rely solely on their own enquiries.

**LJ Hooker Pacific Pines | Helensvale**  
**(07) 5573 2099**

- \*Modernized bathroom with shower, bath, vanity, and separate toilet
- \*19 solar panels will help keep the bills down
- \*Internal access from the lock-up garage
- \*Additional parking for 2 more cars
- \*Body corporate fees (approx. \$79.55) per week, including building insurance)

The property is centrally located, with neighbourhood shops and bus stops nearby and the primary school just down the road. Westfield shopping centre, schools, and Helensvale rail and tram stations are just minutes away.

The light rail provides easy access to the Gold Coast University Hospital, Griffith University, and the coastal suburbs, currently as far as Broadbeach.

Perfect for first-home buyers or downsizers, this beautifully renovated home is priced to sell. Don't miss out —attend the open home this weekend!

Disclaimer:

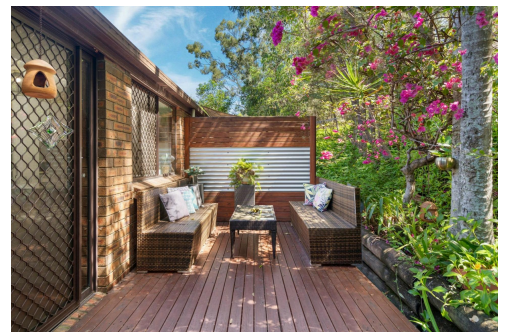
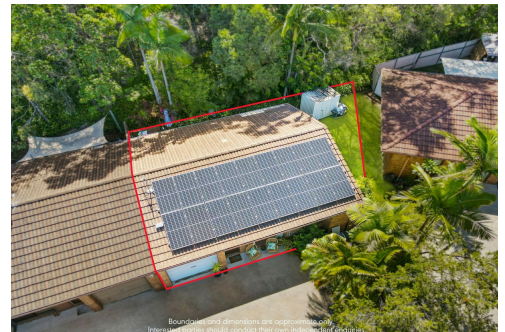
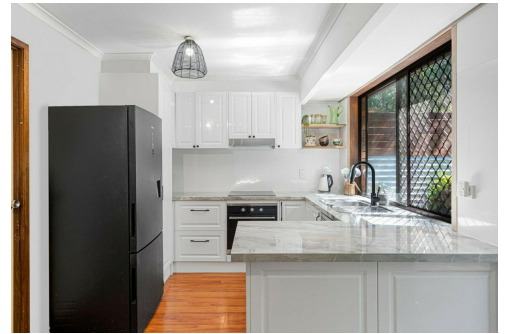
All information contained is gathered from relevant third party sources. We cannot guarantee or give any warranty about the information provided. Interested parties must rely solely on their own enquiries.

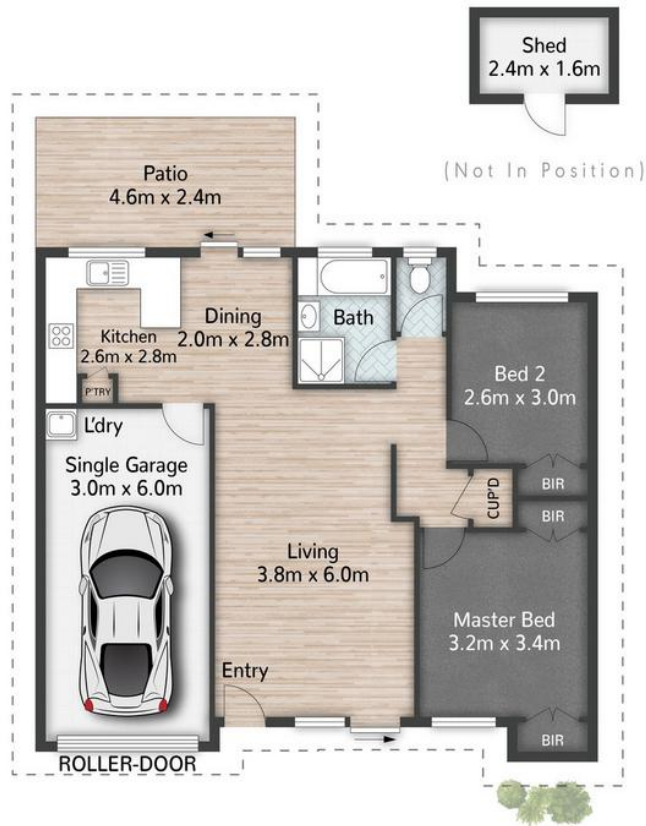
## More About this Property

Property ID	35HFGMK
Property Type	DuplexSemi-detached

**Mark Worthington 0411 874 168**  
Sales Consultant | [markworthington@ljhteam.com.au](mailto:markworthington@ljhteam.com.au)

**LJ Hooker Pacific Pines | Helensvale (07) 5573 2099**  
8 Discovery Drive, HELENSVALE QLD 4212  
[pacificpines-helensvale.ljhooker.com.au](http://pacificpines-helensvale.ljhooker.com.au) | [admin@ljhteam.com.au](mailto:admin@ljhteam.com.au)





23/24 Cannington Place HELENSVALE

2 | 1 | 1 | 107m<sup>2</sup>

**LJ Hooker**

All dimensions are approximate; they are subject to errors and inaccuracies and no liability will be accepted. Plans are shown for marketing purposes only.

**LJ Hooker**

**LJ Hooker Pacific Pines | Helensvale  
(07) 5573 2099**

**Disclaimer:** All information contained therein is gathered from relevant third parties sources. We cannot guarantee or give any warranty about the information provided. Interested parties must rely solely on their own enquiries.