



## Helena Valley, 17 Koorla Drive

Harmony in Helena Valley



Swap the bustle of city life for the foothills of the Darling Scarp in Perth. Welcome to 17 Koorla Drive, Helena Valley.

Green titled on 313sqm, this absolutely immaculate modern home has the wow factor. Built in 2024 everything feels fresh and new and the open plan living screams family gatherings and inclusiveness.

The kitchen is a stunner with Westinghouse freestanding 900mm stainless steel dual cooker and 5 burner gas hob, cook up a storm whilst the family sit at the breakfast bar or dining table.

Rates:

Council - \$3,175.00 p.a.

Water - \$1,350.02 p.a.

**For Sale**

\$825,000 to \$850,000

**View**

By Appointment

**Contact**

**Katie Lawley**

0448 682 624

katie.lawley@ljhooker.com.au



**LJ Hooker City Residential**  
**(08) 9325 0700**

**Disclaimer:** All information contained therein is gathered from relevant third parties sources. We cannot guarantee or give any warranty about the information provided. Interested parties must rely solely on their own enquiries.

## More About this Property

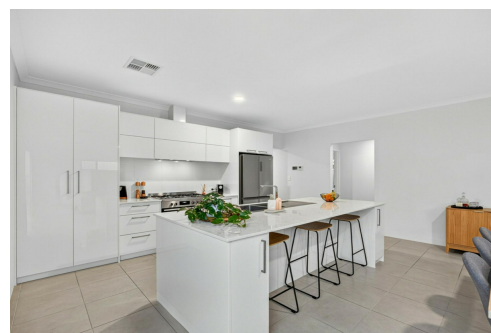
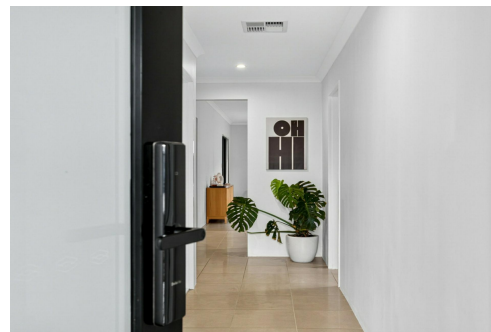
Property ID	3TM1FGJ
Property Type	House
Including	Air Conditioning Built-in-Robes Liveability

**Katie Lawley 0448 682 624**

Sales Executive | [katie.lawley@ljhooker.com.au](mailto:katie.lawley@ljhooker.com.au)

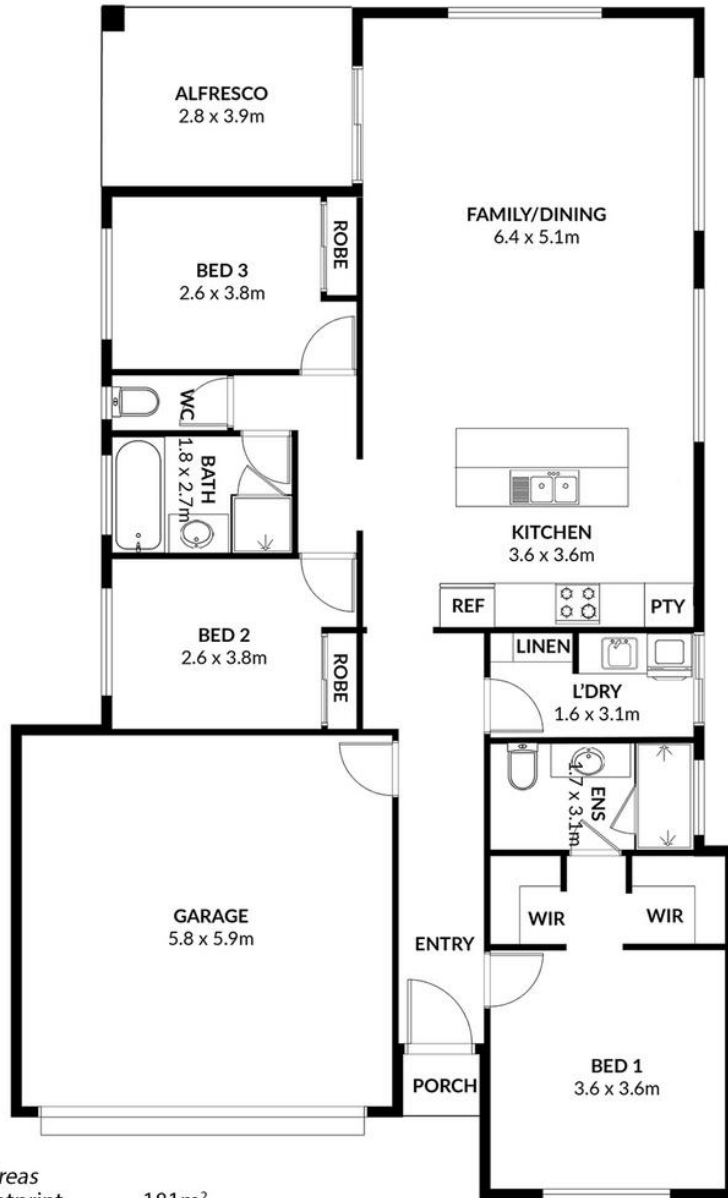
**LJ Hooker City Residential (08) 9325 0700**

Shop 30, 82 Royal Street, EAST PERTH WA 6004  
[cityresperth.ljhooker.com.au](http://cityresperth.ljhooker.com.au) | [hello@ljhpxp.com.au](mailto:hello@ljhpxp.com.au)



**LJ Hooker City Residential**  
**(08) 9325 0700**

**Disclaimer:** All information contained therein is gathered from relevant third parties sources. We cannot guarantee or give any warranty about the information provided. Interested parties must rely solely on their own enquiries.



Approximate Areas  
 Total House Footprint 181m<sup>2</sup>  
 Total Lot Size 313m<sup>2</sup>



17 Koorla Dr, Helena Valley

This floor plan is for illustrative purposes only. While every effort has been made to provide an accurate representation, all measurements & other information are approximation only.

[www.cityresperth.ljhooker.com.au](http://www.cityresperth.ljhooker.com.au)  
[www.perthrealestaemedia.com](http://www.perthrealestaemedia.com)



LJ Hooker City Residential  
 (08) 9325 0700

**Disclaimer:** All information contained therein is gathered from relevant third parties sources. We cannot guarantee or give any warranty about the information provided. Interested parties must rely solely on their own enquiries.