




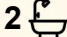
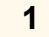
14 Sauter Street, Heatley

UNDER OFFER.....

Step inside this versatile low-set residence and discover a home designed for both relaxed family living and effortless entertaining. With a flexible floor plan, multiple living zones, and a sparkling pool, this property offers lifestyle options as wide as your imagination. Located in the popular suburb of Heatley this fully airconditioned three bedroom home with large separate office is close to Townsville Hospital, Lavarack Barracks and major shopping centres

Key Features:

- Three spacious bedrooms plus a dedicated study - perfect for working from home or quiet retreat
- Two well appointed bathrooms with both bathrooms having separate toilets
- Converted garage offering flexibility as a third living room, games room, or an additional bedroom
- Bright, open-plan living and dining zones that flow seamlessly for everyday comfort
- Resort size in-ground pool, ideal for summer days and weekend entertaining under the covered patio area
- the large 607m2 block has two concrete driveways and gated access to both sides of the home
- Newly installed 5kva roof solar system and inverter
- Fully irrigated

3  2  1 

FOR SALE
\$595,000

AGENTS

Suzanne Coverlid
0439 032 210
suzanne.coverlid@ljhooker.com.au

AGENCY

LJ Hooker Townsville
07 44262125

All information contained therein is gathered from relevant third parties sources.
We cannot guarantee or give any warranty about the information provided.
Interested parties must rely solely on their own enquiries.

 **LJ Hooker**

- Low-set layout ensuring easy accessibility and convenience for all ages

This home is more than just a place to live-it's a canvas ready for you to create the lifestyle you've always dreamed of.

MORE DETAILS

Property ID	42PHWK
Property Type	House
Land Area	607 m2
Including	Toilets (2)

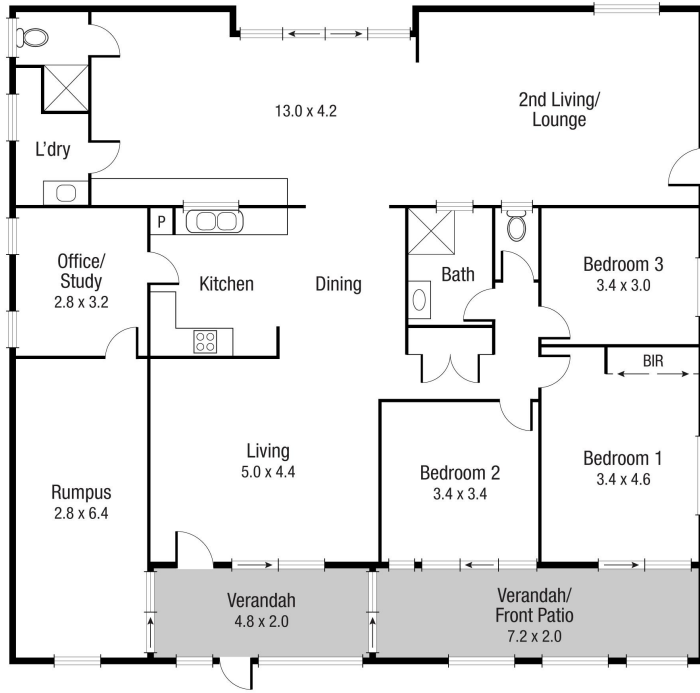
Suzanne Coverlid 0439 032 210

Sales & Marketing Consultant | suzanne.coverlid@ljhooker.com.au

LJ Hooker Townsville 07 44262125

Shop 18/39 Eyre Street, NORTH WARD QLD 4810
townsville.ljhooker.com.au | townsville@ljhooker.com.au





Scale in metres. Indicative only. Dimensions are approximate. All information contained herein is gathered from sources we believe to be reliable. However we cannot guarantee its accuracy and interested persons should rely on their own enquiries.

TOTAL AREA : 199.0 sq.m

14 Sauter St, Heatley