

Hatton Vale, 24 White Gums Road

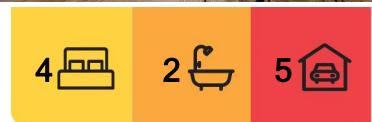
Huge Family Home with all the Extras in Fairways Estate!

Are you looking for a super modern, large family home with an inground salt water pool, 3 car garage and a shed? Well you have found it and it is on an elevated 4,050sqm block.

There is nothing but WOW from the moment you set foot into this home. From the exterior to the interior, you seem to find yourself emotionally attached as you appreciate the features, quality and presentation put into this family home.

The home offers an open floor plan and three generous living areas plus a media room. At first glance, the space seems to go on forever, and it does. At the heart of this home, the kitchen is easily the hub of it all with its modern styling and practical edge giving a sophisticated look, with plenty of bench and cupboard space.

The colossal yet inviting living areas including a family living/lounge room, separate dining area, media room plus a 3rd living/activity room; will set the mood for your guests to mingle



For Sale
Please Call

View
ljhooker.com.au/HE1HBC

Contact
Janette Lewis
0407 144 403
jlewis@ljhplainland.com.au



LJ Hooker Plainland | Laidley
(07) 5411 4960

Disclaimer: All information contained therein is gathered from relevant third parties sources. We cannot guarantee or give any warranty about the information provided. Interested parties must rely solely on their own enquiries.

from room to room in a seamless motion.

Some of the homes features include: Separate office, four spacious bedrooms all complete with built-in robes, master with ensuite and a gigantic walk in robe with custom joinery, fans, ducted reverse cycle air conditioning, plus a huge amount of storage which will address the needs of every growing family plus a stunning 2nd bathroom with shower, bath and separate toilet which will cater to the ins and outs of your children's busy lives. The list doesn't stop there you also have a triple remote garage (3rd garage currently used as a gym) with internal access.

Now step outside to the entertainer's paradise with an enormous undercover entertainment area close to the inground pool and low maintenance gardens. Imagine firing up the BBQ with family and friends, there is enough space for the kids and pets to run and play on the block. There is also a 2 bay shed towards the back of the block.

This home is fully insulated and has heaps of storage space and of course it has solar on the roof and gas hot water.

This is more than just a HOME, it's a LIFESTYLE! Prepare to Fall in LOVE!

Close to schools, shopping centre and the highway, makes this a highly sort after property in a fast growing area.

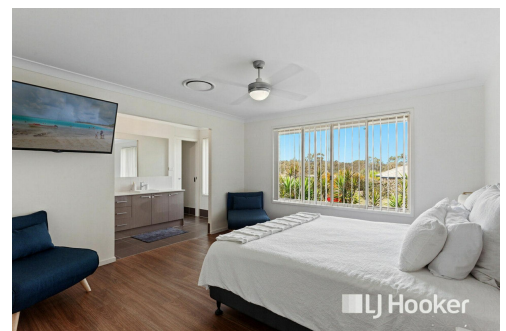
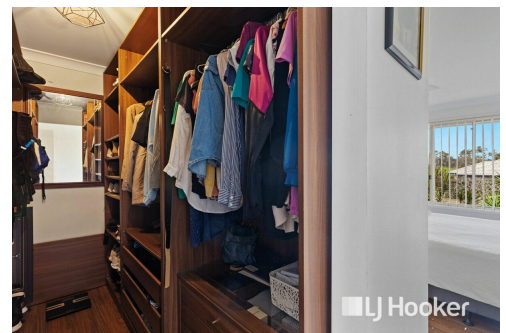
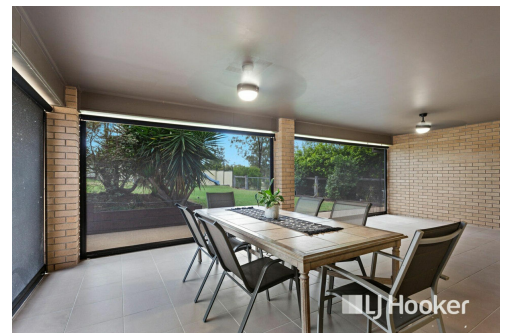
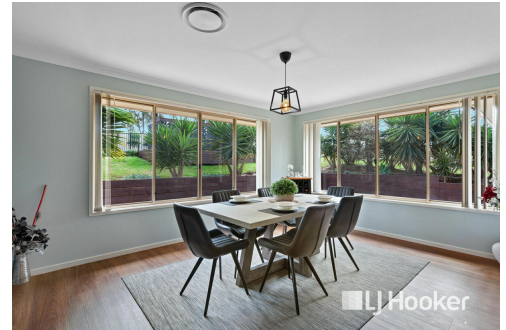
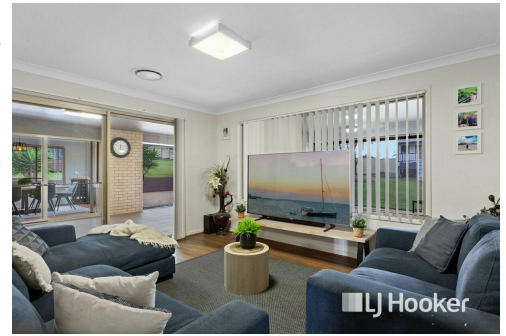
To view call Janette Lewis on 0407 144 403.

More About this Property

Property ID	HE1HBC
Property Type	House
Land Area	4050 m ²

Janette Lewis 0407 144 403
Sales Consultant | jlewis@ljhplainland.com.au

LJ Hooker Plainland | Laidley (07) 5411 4960
Shop 1/16 Gehrke Road, PLAINLAND QLD 4341
laidley.ljhooker.com.au | plainland@ljhplainland.com.au



Disclaimer: All information contained therein is gathered from relevant third parties sources. We cannot guarantee or give any warranty about the information provided. Interested parties must rely solely on their own enquiries.

LJ Hooker Plainland | Laidley
(07) 5411 4960



24 White Gums Road, Hatton Vale

This floor plan is not to scale. The layout and dimensions are approximate. Therefore the plan should be viewed for illustrative purposes only. Bedroom dimensions are from wall to robe.



LJ Hooker Plainland | Laidley
(07) 5411 4960

Disclaimer: All information contained therein is gathered from relevant third parties sources. We cannot guarantee or give any warranty about the information provided. Interested parties must rely solely on their own enquiries.