




2/16a Glenvale Road, Harristown

2  1  1 

## Low-Maintenance Living in a Convenient Inner-City Location

Welcome to 2/16A Glenvale Road, Harristown —a well-presented low-set unit offering comfort, convenience, and easy living. Perfect for first-home buyers, downsizers, or savvy investors, this tidy two-bedroom residence delivers a practical layout and low-maintenance lifestyle in a sought-after location.

Step inside to discover a light-filled living area complete with air conditioning, ensuring year-round comfort. The functional kitchen flows easily into the dining and living space, creating a welcoming area to relax or entertain.

Both bedrooms are well-sized and serviced by a central bathroom, while the home's thoughtful design ensures everything you need is within easy reach.

Outside, enjoy your own private undercover alfresco area, perfect for morning coffee, outdoor dining, or simply unwinding in a quiet setting. Additional features include a remote-controlled lock-up garage with internal access, providing both security and everyday convenience.

### Property Features:

- set brick unit in a quiet complex
- 2 comfortable bedrooms with built in wardrobes
- 1 modern bathroom

### FOR SALE

Please Call

### AGENTS

Ben Barrowclift  
0401 369 201  
bbarrowclift@ljht.com.au

### AGENCY

LJ Hooker Toowoomba  
(07) 4688 2222

All information contained therein is gathered from relevant third parties sources. We cannot guarantee or give any warranty about the information provided. Interested parties must rely solely on their own enquiries.



- conditioned living area
- Remote-controlled lock-up garage with internal access
- Private undercover alfresco area
- maintenance lifestyle

Located close to local shops, schools, parks, and public transport, this property offers an excellent balance of privacy and accessibility. Whether you're looking to move in or invest, 2/16A Glenvale Road is an opportunity not to be missed.

## MORE DETAILS

Property ID	1ZW4F4W
Property Type	Unit
Land Area	124 m2

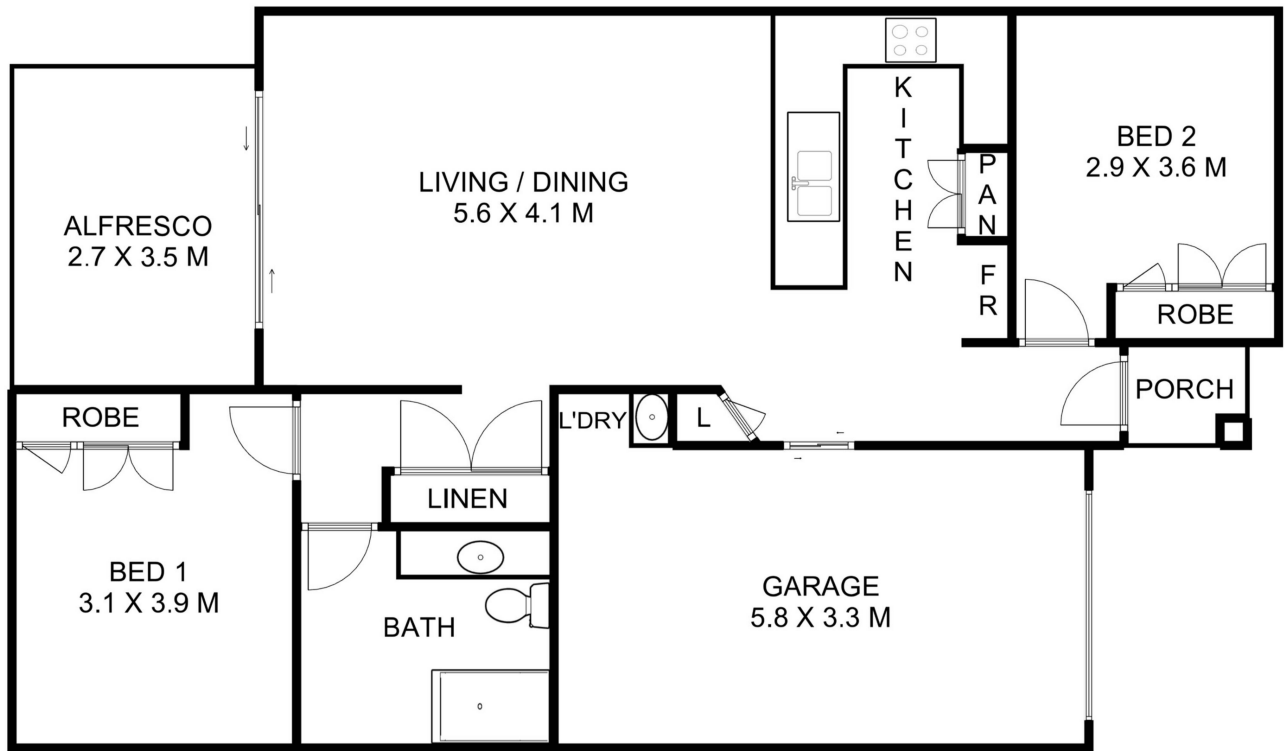
### Ben Barrowclift 0401 369 201

Residential Sales Executive | [bbarrowclift@ljht.com.au](mailto:bbarrowclift@ljht.com.au)

### LJ Hooker Toowoomba (07) 4688 2222

Level 1, 677-683 Ruthven Street, TOOWOOMBA QLD 4350  
[toowoomba.ljhooker.com.au](http://toowoomba.ljhooker.com.au) | [toowoomba@ljht.com.au](mailto:toowoomba@ljht.com.au)





**LJ Hooker** 2/16A Glenvale Road, **Harristown**

This plan is for representational purposes only. All dimensions displayed are approximate and shouldn't be solely relied upon. Do not edit, reproduce, copy, modify, crop or in any way exploit copyright to Statik Illusions. More info : [statikillusions.com/usage-rights/](http://statikillusions.com/usage-rights/)

Internal **99m<sup>2</sup>** External **10m<sup>2</sup>** Total **109m<sup>2</sup>**

