



**LJ Hooker** Leppington | Austral



**LJ Hooker** Leppington | Austral



**LJ Hooker** Leppington | Austral



**LJ Hooker** Leppington | Austral

## Harrington Park, 62 Hawthorne Circuit

Desirable Location

Set upon 720sqm, this contemporary home is positioned moments to Harrington Park's beautiful open parklands, community friendly playgrounds, recreational facilities and minutes to schools and Harrington Plaza.

Boasting a light-filled floor plan with premium features throughout, offering:

- 5 spacious bedrooms with built-in robes, expansive master with ensuite and walk-in robe, downstairs guest bedroom
- Sleek kitchen with waterfall stone bench tops, walk-in pantry, 900mm appliances, abundance of storage and pendant lighting
- Light-filled expansive open plan living and dining area with cosy combustion fireplace
- Main bathroom tiled floor-to-ceiling with wall-hung vanity and freestanding bath
- Formal lounge room and powder room on the ground floor
- Alfresco entertaining area overlooking large backyard enough for a swimming pool
- Dual car garage with two large storage spaces ideal for a workshop or wine cellar

5

2

2

### For Sale

\$1,595,000 - \$1,650,000

### View

[ljhooker.com.au/111QHCV](http://ljhooker.com.au/111QHCV)

### Contact

#### Anthony Bucca

0418 972 882

[abucca.leppington@ljhooker.com.au](mailto:abucca.leppington@ljhooker.com.au)

#### Chelsea Mifsud

0429 628 005

[cmifsud.leppington@ljhooker.com.au](mailto:cmifsud.leppington@ljhooker.com.au)

**LJ Hooker**

**LJ Hooker Leppington | Austral**  
(02) 9606 4311

**Disclaimer:** All information contained therein is gathered from relevant third parties sources. We cannot guarantee or give any warranty about the information provided. Interested parties must rely solely on their own enquiries.

Other features to enhance comfortability include:

- Ducted air conditioning and plantation shutters throughout
- Storage shed and kids cubby house
- Potential for granny flat or in-law retreat (S.T.C.A)

The Lomandra Rise Precinct is set upon a bushland outlook offering peace and tranquility, this rare opportunity is suited for growing families, presenting the perfect blend of convenience and lifestyle.

Disclaimer: The above information has been furnished to LJ Hooker Leppington | Austral by the vendor/vendors legal representative. We have not verified whether or not that information is accurate, and do not have any belief one way or the other in its accuracy. LJ Hooker Leppington | Austral do not accept any responsibility to any person for its accuracy and do no more than pass it on. All interested parties should make and rely upon their own enquiries in order to determine whether or not this information is, in fact, accurate.

## More About this Property

Property ID	111QHCV
Property Type	House
Land Area	720 m <sup>2</sup>
Including	Ensuite Ducted Cooling Ducted Heating Dishwasher Outdoor Entertaining Workshop Built-in-Robes Remote Garage

**Anthony Bucca 0418 972 882**

Sales Manager | [abucca.leppington@ljhooker.com.au](mailto:abucca.leppington@ljhooker.com.au)

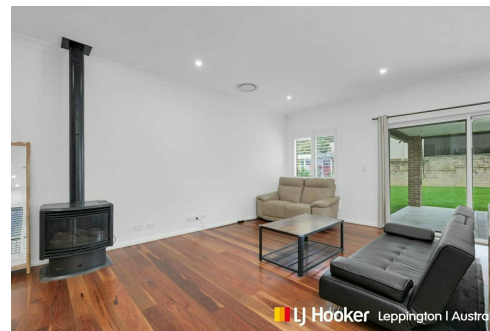
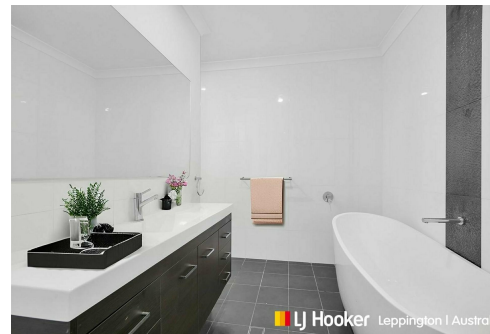
**Chelsea Mifsud 0429 628 005**

Licensed Sales Agent | [cmifsud.leppington@ljhooker.com.au](mailto:cmifsud.leppington@ljhooker.com.au)

**LJ Hooker Leppington | Austral (02) 9606 4311**

Leppington Village Shopping Centre, Shop GC1, 108-116 Ingleburn Road,  
LEPPINGTON NSW 2179

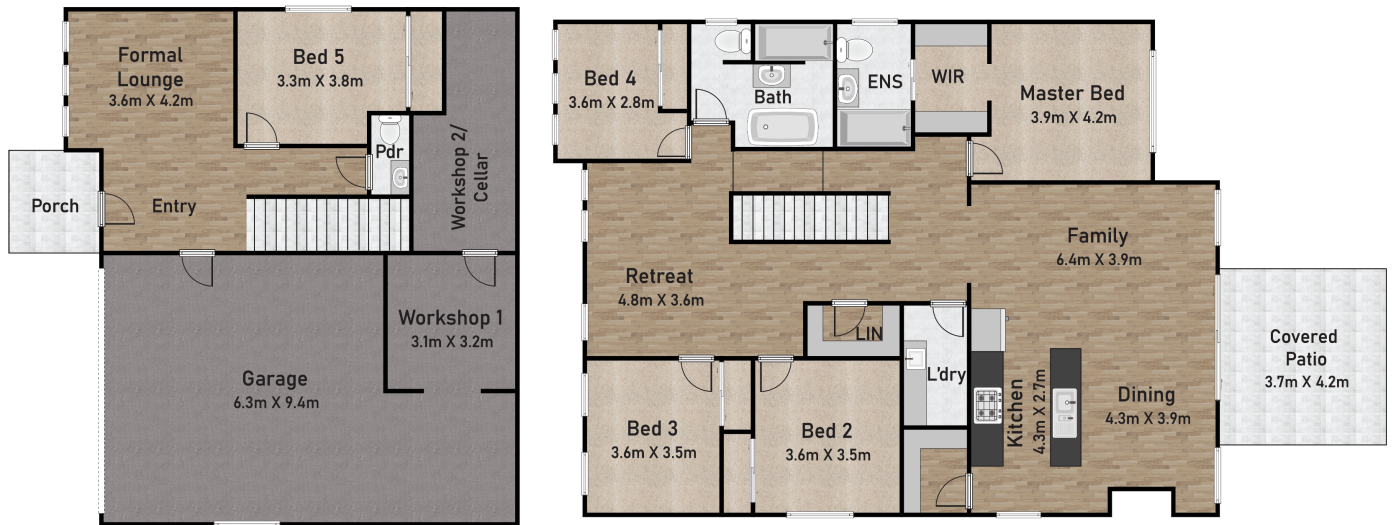
[leppington.ljhooker.com.au](http://leppington.ljhooker.com.au) | [leppington@ljhooker.com.au](mailto:leppington@ljhooker.com.au)



**Disclaimer:** All information contained therein is gathered from relevant third parties sources. We cannot guarantee or give any warranty about the information provided. Interested parties must rely solely on their own enquiries.

**LJ Hooker Leppington | Austral**  
**(02) 9606 4311**





## 62 Hawthorne Cct, Harrington Park NSW 2567



Disclaimer: Dimensions are approximate and should only be used as a guide.  
All information contained herein is gathered from sources we believe to be reliable.  
However, we cannot guarantee it's accuracy and interested parties should rely on their own enquiries.