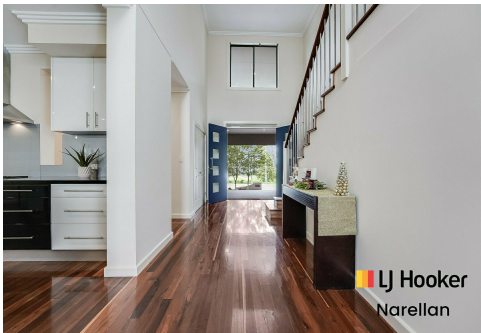

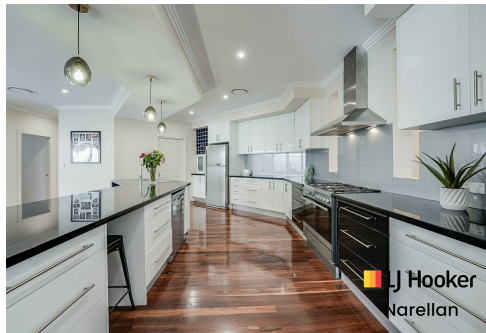




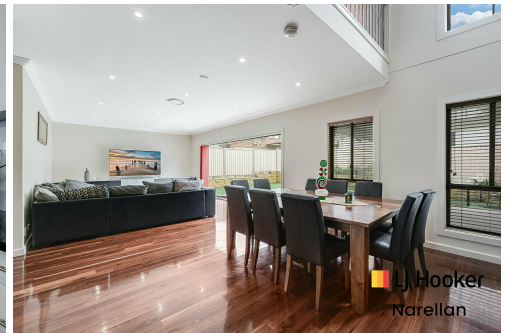
 **LJ Hooker**
Narellan



 **LJ Hooker**
Narellan



 **LJ Hooker**
Narellan



 **LJ Hooker**
Narellan

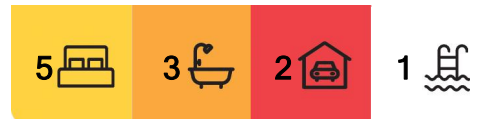
Harrington Park, 6 Rosina Avenue

Perfect Family Home

This stunning, five-bedroom, three-bathroom home in the sought-after Harrington Park estate offers a perfect blend of luxury, functionality, and versatility.

With beautiful hardwood timber throughout, expansive living spaces, and high-end finishes, this property is ideal for large or multigenerational families. It also presents an excellent opportunity for a home-based business, featuring a second entrance for added privacy and convenience.

The heart of the home is a spacious kitchen with premium stainless-steel appliances, a gas cooktop, and a large butler's pantry—perfect for everyday living and entertaining. The layout includes a formal lounge, rumpus/family room, and an upstairs living area, providing ample space for the whole family.



For Sale
Please Call

View
ljhooker.com.au/1Q8MFGQ

Contact
Shannon Daniels
0404 884 588
sdaniels.narellan@ljhooker.com.au

 **LJ Hooker**

Disclaimer: All information contained therein is gathered from relevant third parties sources. We cannot guarantee or give any warranty about the information provided. Interested parties must rely solely on their own enquiries.

LJ Hooker Narellan
(02) 4625 9111

The standout main bedroom features a large private veranda overlooking parkland, a spacious ensuite, and a walk-in robe.

Ducted air conditioning, ducted vacuum, ceiling fans, built-in gas heater, timber floors, and modern downlights flow seamlessly throughout, enhancing the home's comfort and style.

Step outside to a private backyard, where you can entertain under the large alfresco area overlooking the gas-heated saltwater pool—ideal for year-round enjoyment. The oversized double garage offers ample storage and workshop space, while side access provides additional storage options.

This exceptional property sits on over 700m² of land and combines luxury living with practical functionality. Don't miss your chance to secure this quality home, which overlooks parkland and is within walking distance to local schools and shops.

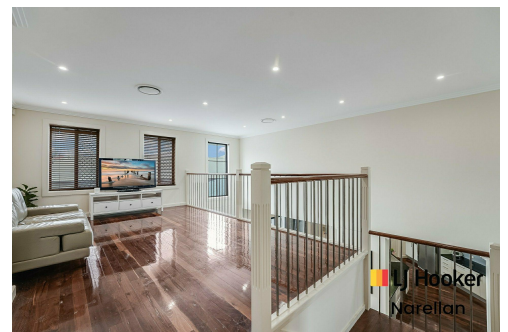
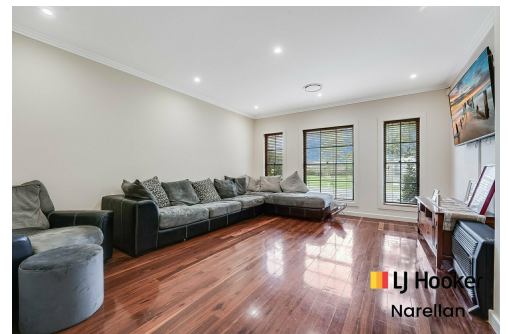
DISCLAIMER: All information contained herein is gathered from sources we consider to be reliable. However we cannot guarantee or give any warranty about the information provided and interested parties must solely rely on their own enquires.

More About this Property

Property ID	1Q8MFGQ
Property Type	House
Land Area	700 m2
Including	Air Conditioning Alarm Pool

Shannon Daniels 0404 884 588
Director/Licensee | sdaniels.narellan@ljhooker.com.au

LJ Hooker Narellan (02) 4625 9111
5/22 Somerset Avenue, NARELLAN NSW 2567
narellan.ljhooker.com.au | narellan@ljhooker.com.au



LJ Hooker Narellan
(02) 4625 9111

Disclaimer: All information contained therein is gathered from relevant third parties sources. We cannot guarantee or give any warranty about the information provided. Interested parties must rely solely on their own enquiries.