



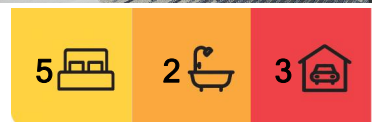
## Harrington Park, 5 Redford Place

Exclusive Cul-de-sac in The Grove!

Vendors have relocated, property will be sold!

Introducing 5 Redford Place, a stunning family home built by Masterton Homes, nestled in the prestigious Wildfire Estate of Harrington Grove. This beautifully designed property sits on a spacious 771 sqm block, perfectly positioned at the end of a quiet cul-de-sac, offering both peace and privacy for growing families or those seeking a bit more space without compromise. With its thoughtful design, modern amenities, and prime location, this home truly offers the best of both functionality and convenience.

Stepping through the front door, you'll be greeted by a grand hallway with high ceilings that immediately creates a sense of space and luxury. At the front of the home, you'll find the master bedroom, featuring a private ensuite and walk in wardrobe alongside a versatile fifth bedroom that could serve as a guest room or home office that also includes its own powder room and walk in wardrobe. Moving further into the heart of the home, the



**For Sale**

\$1,500,000 - \$1,550,000

**View**

Thu 30th Jan @ 5:00PM - 5:30PM

**Contact**

**Haydn Maxwell**

0412 412 684  
camden@ljhooker.com.au

**Jaylen Berroa**

0408 505 148  
jaylen.berroa@ljhooker.com.au



**LJ Hooker Camden | Bringelly**  
**(02) 4655 2111**

**Disclaimer:** All information contained therein is gathered from relevant third parties sources. We cannot guarantee or give any warranty about the information provided. Interested parties must rely solely on their own enquiries.

expansive open-plan living, dining, and kitchen area is perfect for entertaining or relaxing. The kitchen boasts sleek 40mm stone benchtops, ample storage, and an island that seamlessly flows into the outdoor entertaining space, perfect for hosting family gatherings or quiet evenings outdoors.

For movie lovers, the separate cinema room provides the ideal setting for cozy nights. At the rear of the home, you'll discover three additional oversized bedrooms, each with built-in wardrobes, as well as the main bathroom and laundry. This layout ensures privacy and space for every family member.

Other comforts and benefits include:

- Ducted air conditioning
- Solar panel system with provision for a wall-mounted battery addition
- 3 phase power
- 3 car, drive through garage
- Wall bar
- Under cover swim spa featuring three hydrotherapy seats for ultimate relaxation
- Access to all Harrington grove country clubs, parks and amenities

Situated in a prime location, with easy access to Oran Park, Gregory Hills, and Narellan CBDs, this home offers the ultimate in convenient modern living.

Perfect for those seeking a blend of luxury and comfort. This property is located in one of the area's most sought-after estates so be quick and don't miss out.

Disclaimer: All information contained herein is true and correct to the best of our ability however, we encourage all interested parties to carry out their own enquiries at all times and to not solely rely on the information and photos provided here within as well as discussions with agents or their representatives.

## More About this Property

<b>Property ID</b>	JQ3HUD
<b>Property Type</b>	House
<b>Land Area</b>	771 m <sup>2</sup>

**Haydn Maxwell 0412 412 684**

Director & Sales | camden@ljhooker.com.au

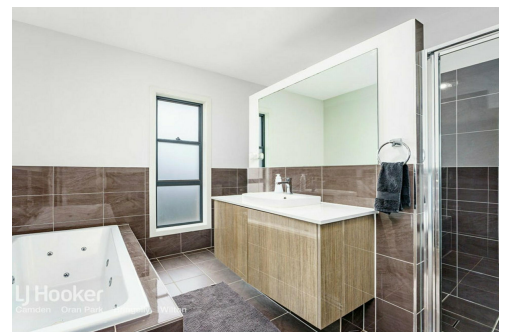
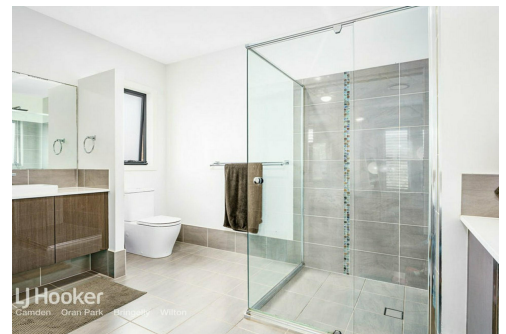
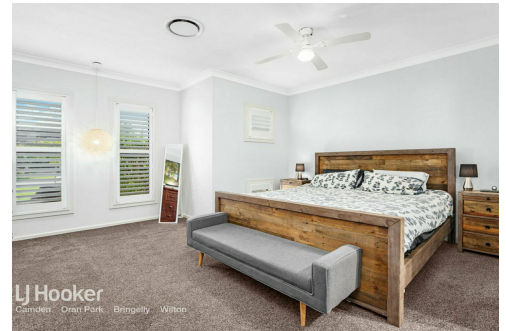
**Jaylen Berroa 0408 505 148**

Licensed Real Estate Agent | jaylen.berroa@ljhooker.com.au

**LJ Hooker Camden | Bringelly (02) 4655 2111**

84 Argyle Street, CAMDEN NSW 2570

camden-bringelly.ljhooker.com.au | camden@ljhooker.com.au



**Disclaimer:** All information contained therein is gathered from relevant third parties sources. We cannot guarantee or give any warranty about the information provided. Interested parties must rely solely on their own enquiries.

**LJ Hooker Camden | Bringelly  
(02) 4655 2111**