



Hampton Park, 1/21 Green Valley Crescent

Fully Renovated & Perfectly Positioned —Walk to Everything!

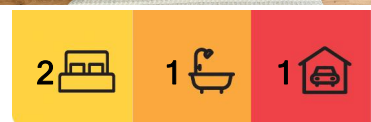
Whether you're a first home buyer, savvy investor, or downsizer seeking comfort and convenience, this stunningly renovated unit ticks all the boxes! Ideally located within easy walking distance to the Hampton Park Shopping Centre, schools, parks, and public transport, this home offers both lifestyle and location in one unbeatable package.

Step inside and be impressed by the brand-new interior, thoughtfully renovated from top to bottom. Featuring 2 spacious bedrooms plus a versatile study, the home offers flexibility for work, rest or play.

The large formal lounge room provides a warm welcome and flows effortlessly through to the separate family and meals area, ideal for relaxed everyday living. The stylish new kitchen is a standout, showcasing stone benchtops, stainless steel appliances, dishwasher, and plenty of cupboard space-perfect for the home chef.



Disclaimer: All information contained therein is gathered from relevant third parties sources. We cannot guarantee or give any warranty about the information provided. Interested parties must rely solely on their own enquiries.



For Sale
\$580,000 - \$635,000

View
Wed 16th Jul @ 5:30PM - 5:50PM

Contact
John Deo
0411 873 123
john.deo@ljhcasey.com.au
Basir Rezaei
0469 305 281
basir.rezaei@ljhcasey.com.au

LJ Hooker Hampton Park
(03) 9702 8388

Enjoy the sparkling brand-new bathroom, complemented by the convenience of two toilets. The entire home has been freshly painted inside and out-including the roof, fitted with brand-new carpets, and hybrid floor boards, creating a fresh and inviting space throughout.

Outside, you'll find a secure backyard complete with a garden shed, water tank, and a generously sized front yard perfect for kids or pets to play. A dedicated car space adds to the practicality, and with no body corporate, this property presents a rare and affordable opportunity in the heart of Hampton Park.

Move in with nothing more to do-just unpack and enjoy!

Disclaimer: All information contained herein is gathered from sources we consider to be reliable. However, we cannot guarantee or give any warranty about the information provided, and interested parties must solely rely on their own enquiries.

More About this Property

Property ID	47XP5FHE
Property Type	Unit
House Size	12 m2
Land Area	360 m2
Including	Close to Schools Close to Shops Close to Transport

John Deo 0411 873 123

Director - Officer In Effective Control | john.deo@ljhcasey.com.au

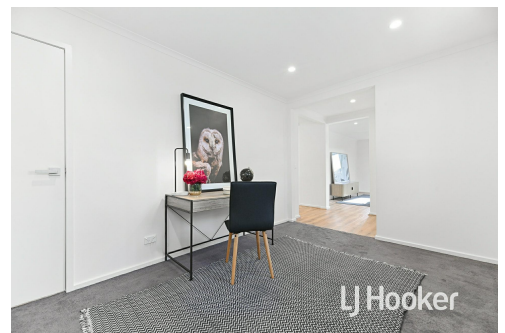
Basir Rezaei 0469 305 281

Sales Associate | basir.rezaei@ljhcasey.com.au

LJ Hooker Hampton Park (03) 9702 8388

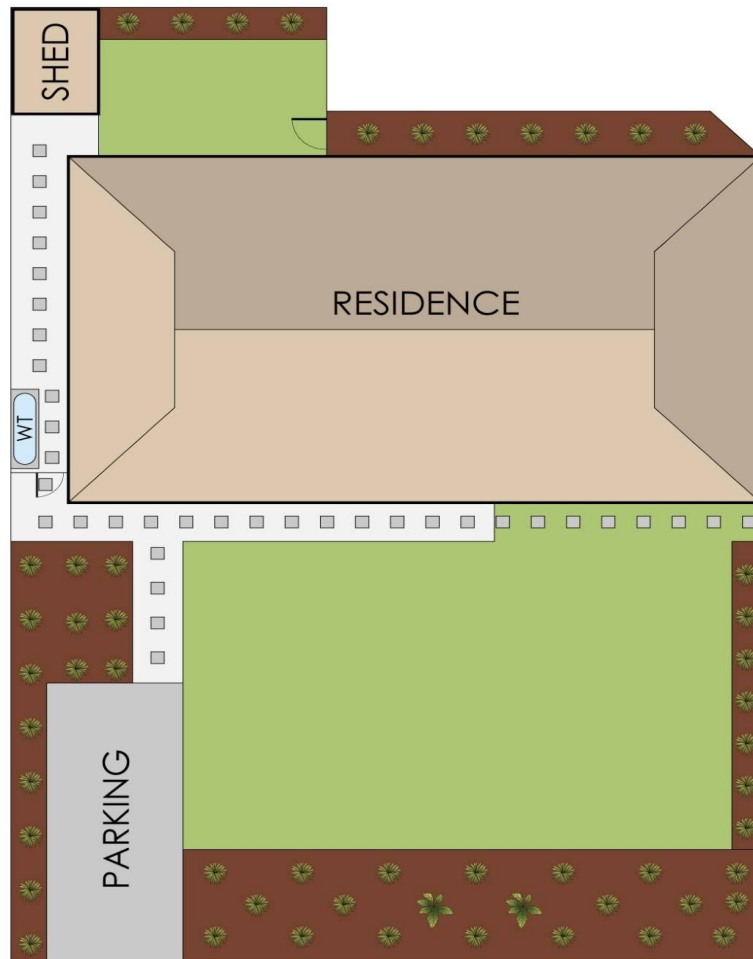
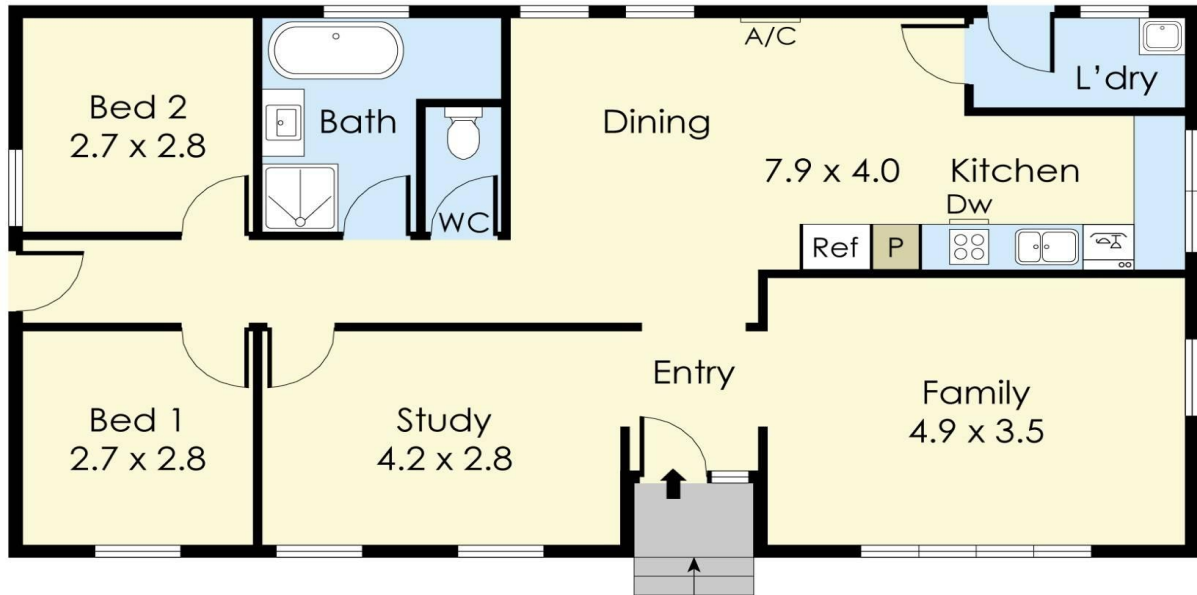
Shop 20, Hampton Park Shopping Centre, 166 Somerville Road, HAMPTON PARK VIC 3976

hamptonpark.ljhooker.com.au | john.deo@ljhcasey.com.au



Disclaimer: All information contained therein is gathered from relevant third parties sources. We cannot guarantee or give any warranty about the information provided. Interested parties must rely solely on their own enquiries.

LJ Hooker Hampton Park
(03) 9702 8388



1/21 Green Valley Crescent, Hampton Park

This floorplan is for illustration purposes only and no warranty is given to its accuracy.
Purchasers are advised to carry out their own investigations.