



## Hampton Park, 2/15 Parkland Avenue

### Spacious Double-Story Family Home with Big Living Area

Nestled in the heart of Hampton Park, 2/15 Parkland Avenue, stands as a shining example of modern family living. This double-story residence offers a harmonious blend of style, space, and comfort. Situated in a tranquil cul-de-sac, this home is ideal for families seeking a contemporary lifestyle in a convenient location..

Introducing the epitome of luxurious living in the heart of Hampton Park! Feast your eyes on our brand new, exquisite townhouse offering unparalleled elegance and comfort. This stunning gem boasts 4 bedrooms, and 3 Bathroom and car garage, providing ample space for your growing family.

Step inside and be greeted by an atmosphere of sophistication, where every detail has been meticulously crafted to offer the finest living experience. With top-range quality finishes and exquisite craftsmanship, this townhouse radiates an undeniable sense of prestige. Indulge in the spaciousness of each bedroom, designed to create a haven of



**Disclaimer:** All information contained therein is gathered from relevant third parties sources. We cannot guarantee or give any warranty about the information provided. Interested parties must rely solely on their own enquiries.



**For Sale**  
\$690,000 - \$759,000

**View**  
[ljhooker.com.au/83UHWR](http://ljhooker.com.au/83UHWR)

**Contact**  
**Namat Naseri**  
0499 093 481  
[nnaseri.dandenong@ljhooker.com.au](mailto:nnaseri.dandenong@ljhooker.com.au)

**Esmail Namdar**  
0498 577 554  
[esmail.namdar@ljhooker.com.au](mailto:esmail.namdar@ljhooker.com.au)

**LJ Hooker Dandenong City**  
**(03) 9877 9750**

tranquillity and privacy. The master suite offers a sanctuary of relaxation, complete with a luxurious ensuite bathroom, perfect for unwinding after a long day.

The open-plan living area seamlessly blends style and functionality, providing the perfect space for entertaining guests or enjoying quality time with your loved ones. The modern kitchen, equipped with high-end appliances and sleek countertops, invites you to unleash your culinary creativity.

Convenience is at your doorstep with this property's prime location. Situated close to Hampton Park Secondary and Primary School, Hampton Park and Westfield Fountain Gate shopping centres, public transport, and freeway access, residents will enjoy every day easy connectivity to essential amenities and services.

This Brand-New property is a perfect blend of comfort, convenience, and contemporary elegance. Whether you're a first-time homebuyer, investor, this residence offers a stylish design, practical features, and a prime location. Don't miss the opportunity to make this house your home.

This property needs to be on your "must-see" list this weekend!

For more information contact Namat Naseri: 0499 093 481 before it's SOLD!

Note: Every care has been taken to verify the accuracy of the details in this advertisement, however, we cannot guarantee its correctness. Prospective purchasers are requested to take such action as is necessary, to satisfy themselves with any pertinent matters.

## More About this Property

<b>Property ID</b>	83UHWR
<b>Property Type</b>	Townhouse

### Namat Naseri 0499 093 481

Sales Specialist | [nnaseri.dandenong@ljhooker.com.au](mailto:nnaseri.dandenong@ljhooker.com.au)

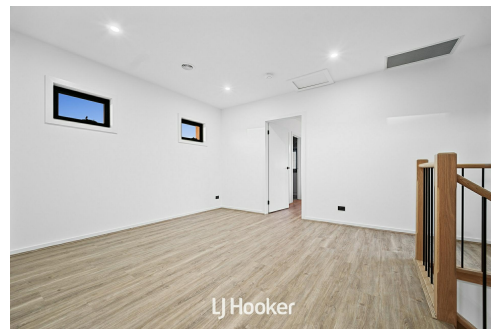
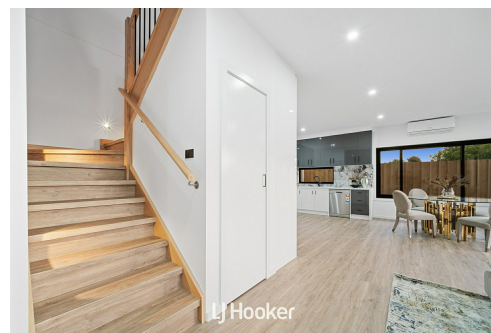
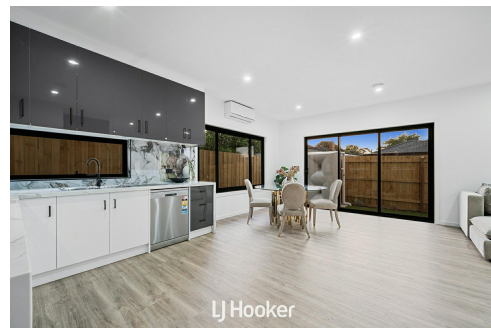
### Esmail Namdar 0498 577 554

Licensed Estate Agent | [esmail.namdar@ljhooker.com.au](mailto:esmail.namdar@ljhooker.com.au)

### LJ Hooker Dandenong City (03) 9877 9750

347 Lonsdale Street, DANDENONG VIC 3175

[dandenong.ljhooker.com.au](http://dandenong.ljhooker.com.au) | [dandenong@ljhooker.com.au](mailto:dandenong@ljhooker.com.au)



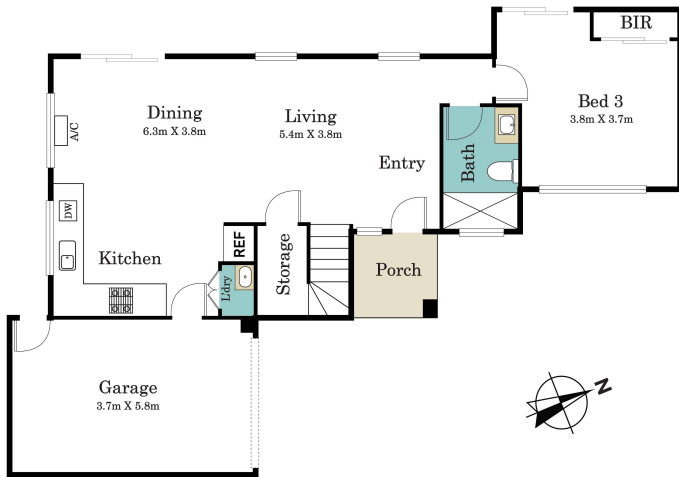
**LJ Hooker Dandenong City**  
**(03) 9877 9750**

**Disclaimer:** All information contained therein is gathered from relevant third parties sources. We cannot guarantee or give any warranty about the information provided. Interested parties must rely solely on their own enquiries.

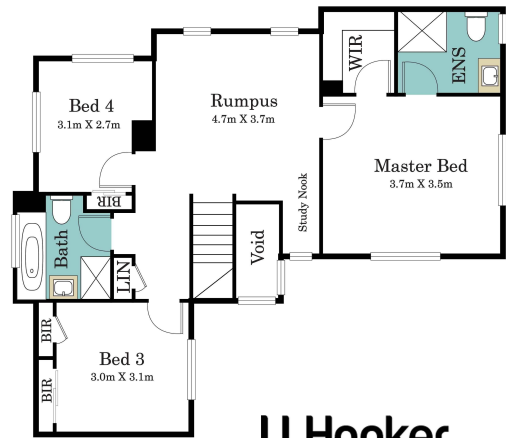
## Ground Floor

Shed

W/T



## First Floor



LJ Hooker

## Unit 2/15 Parkland Avenue, Hampton Park

\* Dimensions are approximate and for illustrative purposes only