



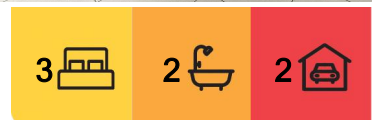
Hampton Park, 8 Marlene Court

Spacious 3-Bedroom Family Home in Central Hampton Park! Walk to Everything!

Perfectly positioned in the heart of Hampton Park, this well-presented family home offers the ideal blend of comfort, convenience, and lifestyle. Located within walking distance to local schools, Hampton Park shopping centre, parklands, and public transport, this home provides everything you need right at your doorstep.

Step inside to be welcomed by a formal lounge room, the perfect setting to entertain guests or relax in comfort. Flowing through to the heart of the home is the well-appointed hostess kitchen, complete with ample bench and cupboard space, overlooking the spacious family meals area-ideal for casual family dining.

Boasting three bedrooms and 1 study, the master retreat features its own private ensuite, while the remaining bedrooms are all serviced by a large central bathroom.



For Sale
Auction

View
ljhooker.com.au/47XF8FHE

Contact
John Deo
0411 873 123
john.deo@ljhcasey.com.au

Aren Aliu
0403 613 988
aren.aliu@ljhcasey.com.au



Disclaimer: All information contained therein is gathered from relevant third parties sources. We cannot guarantee or give any warranty about the information provided. Interested parties must rely solely on their own enquiries.

LJ Hooker Hampton Park
(03) 9702 8388

Additional features included are a large undercover pergola perfect for entertaining, a secure, enclosed backyard with ample space for kids and pets to play a large shed for storage, and a double lock-up carport offering safe and private off-street parking.

Whether you're a growing family, savvy investor, or first-home buyer looking to secure a quality property in a prime location, this home ticks all the boxes. Don't miss this fantastic opportunity.

Disclaimer: All information contained herein is gathered from sources we consider to be reliable. However, we cannot guarantee or give any warranty about the information provided, and interested parties must solely rely on their own enquiries.

More About this Property

Property ID	47XF8FHE
Property Type	House
House Size	17 m2
Land Area	579 m2
Including	Ensuite Built-in-Robes Carpeted Close to Schools Close to Shops Close to Transport

John Deo 0411 873 123

Director - Officer In Effective Control | john.deo@ljhcasey.com.au

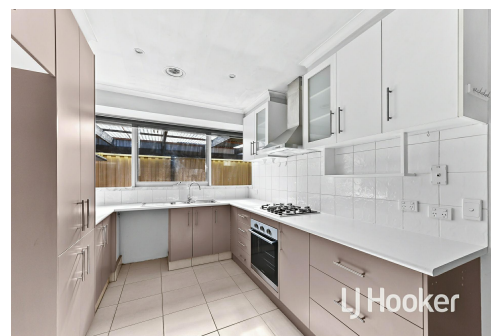
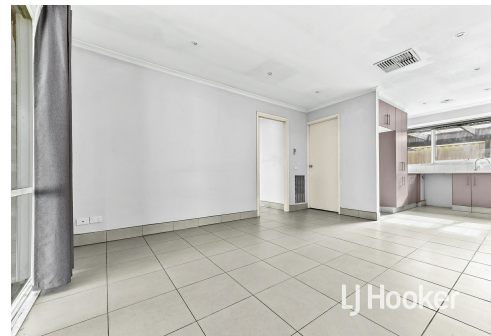
Aren Aliu 0403 613 988

Sales Manager / Auctioneer / Licensed Estate Agent | aren.aliu@ljhcasey.com.au

LJ Hooker Hampton Park (03) 9702 8388

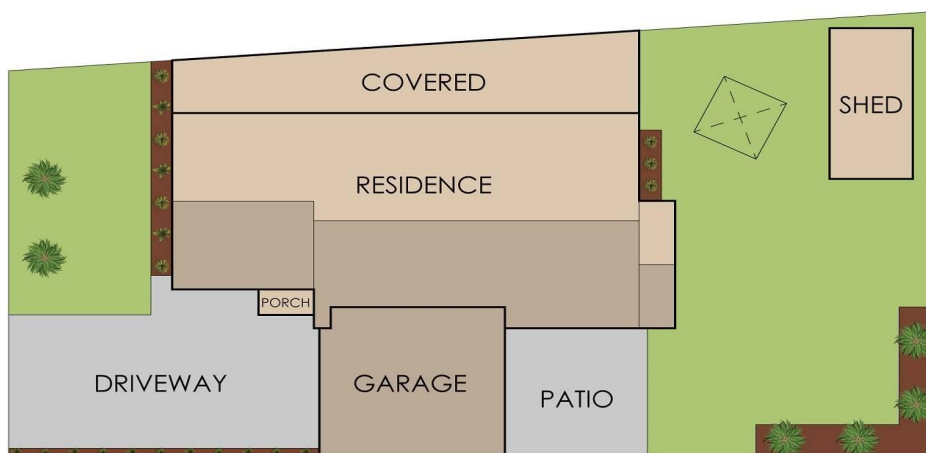
Shop 20, Hampton Park Shopping Centre, 166 Somerville Road, HAMPTON PARK VIC 3976

hamptonpark.ljhooker.com.au | john.deo@ljhcasey.com.au



Disclaimer: All information contained therein is gathered from relevant third parties sources. We cannot guarantee or give any warranty about the information provided. Interested parties must rely solely on their own enquiries.

LJ Hooker Hampton Park
(03) 9702 8388



8 Marlene Court, Hampton Park

This floorplan is for illustration purposes only and no warranty is given to its accuracy. Purchasers are advised to carry out their own investigations.