



7 Candlebark Close, Hampton Park

Spacious Family Home in a Quiet Court Location

Nestled in a peaceful court in the heart of Hampton Park, this spacious family home offers comfort, space, and plenty of room for the growing family.

Featuring 4 generous bedrooms, the master bedroom is complete with a walk-in robe and full ensuite, while the remaining 3 bedrooms are conveniently located near the central family bathroom.

The home boasts multiple living zones including a formal lounge and dining room, a large hostess kitchen with ample bench and cupboard space overlooking the meals area, plus a separate rumpus room providing plenty of space for family living and entertaining.

Step outside and enjoy the fantastic outdoor lifestyle on offer, with a swimming pool, decking area ideal for entertaining family and friends, and plenty of space to relax and unwind.

Car accommodation is well catered for with a large double garage complete with a workshop area, perfect for tradies, hobbyists, or extra storage.

4  2  2 

AUCTION

Sat 11th Jul @ 11:00AM

VIEW

Sat 20th Jun @ 10:50AM - 11:10AM

AGENTS

John Deo
0411 873 123
john.deo@ljhc Casey.com.au

AGENCY

LJ Hooker Hampton Park
(03) 9702 8388

All information contained therein is gathered from relevant third parties sources.
We cannot guarantee or give any warranty about the information provided.
Interested parties must rely solely on their own enquiries.



Located close to local schools, shops, parks, and public transport, this fantastic family home presents an excellent opportunity for buyers seeking space, comfort, and a quiet court setting.

An outstanding opportunity to secure a spacious family home in one of Hampton Park's most sought-after court locations.

Disclaimer: All information contained herein is gathered from sources we consider to be reliable. However, we cannot guarantee or give any warranty about the information provided, and interested parties must solely rely on their own enquiries.

MORE DETAILS

Property ID	47Z0WFHE
Property Type	House
House Size	25 m2
Land Area	719 m2
Including	Built-in-Robes
	Close to Schools
	Close to Shops
	Close to Transport

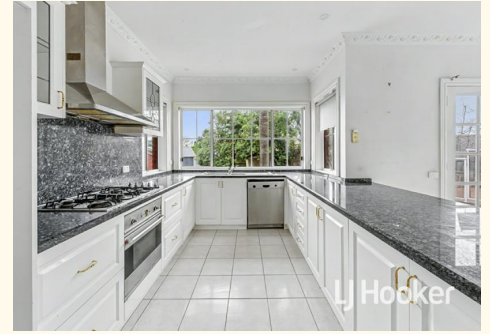
John Deo 0411 873 123

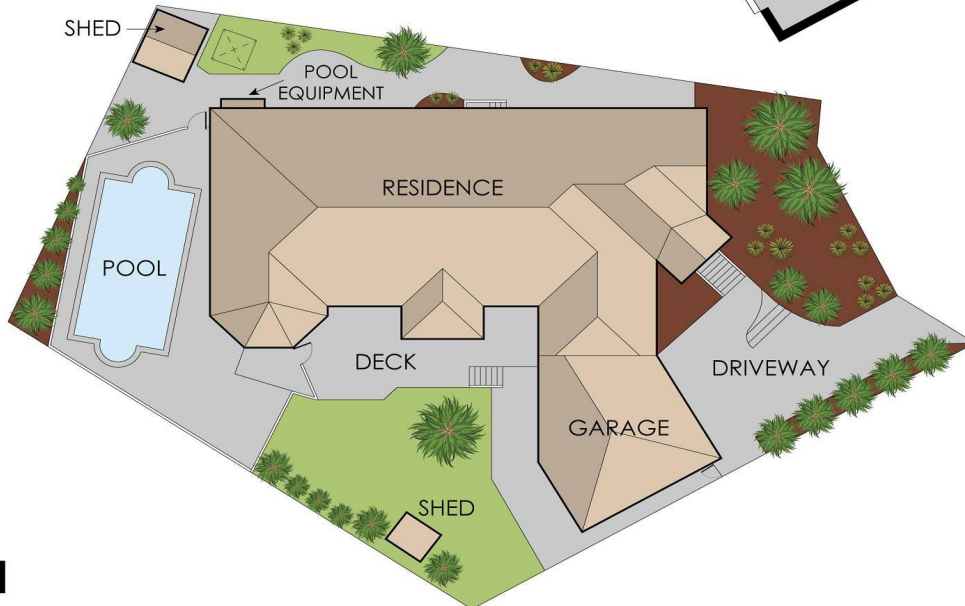
Director - Officer In Effective Control | john.deo@ljhcasey.com.au

LJ Hooker Hampton Park (03) 9702 8388

Shop 20, Hampton Park Shopping Centre, 166 Somerville Road,
HAMPTON PARK VIC 3976

hamptonpark.ljhooker.com.au | john.deo@ljhcasey.com.au





7 Candlebark Close, Hampton Park

This floorplan is for illustration purposes only and no warranty is given to its accuracy. Purchasers are advised to carry out their own investigations.