

Hamilton, 650 Kingsford Smith Drive

Redevelopment Opportunity

Presenting a remarkable opportunity to redevelop this expansive 810sqm corner parcel in Hamilton. Offering extraordinary potential to subdivide or construct multiple new dwellings, including apartments and townhouses *

OR

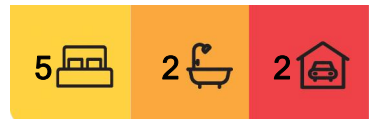
For buyers wishing to retain the existing five-bedroom residence and return it to its former glory, you will be charmed by the leadlight glass, VJ walls, ornate ceilings, timber floors, and spacious interiors, which include two living/dining rooms, each with fireplaces.

Property features:

- Rare 810sqm corner parcel in riverside Hamilton (Corner of Oxford Street)
- Outstanding redevelopment opportunity only 6.5km from the CBD
- Zoned MDR with scope to build multiple units or townhouses*
- 650m to Portside Wharf and 1km to Racecourse Road
- Easy access to bus stops, Doomben station and Bretts Wharf ferry



Disclaimer: All information contained therein is gathered from relevant third parties sources. We cannot guarantee or give any warranty about the information provided. Interested parties must rely solely on their own enquiries.



For Sale
Please Call

View
ljhooker.com.au/295HXX

Contact
Tony Cicchiello
0418 747 266
tony.c@ljhclayfield.com.au

LJ Hooker Clayfield
(07) 3262 2434

- Close to Riverwalks, Northshore, Eagle Farm and Doomben Racecourse
- In the Hamilton SS catchment and moments from private schools
- Proximity to Gateway Motorway and Brisbane Airport

House features:

- Charming character house filled with timeless period details
- 2 living and dining rooms, each with fireplaces
- Additional dining space off the functional kitchen
- Spacious sunroom, separate study and entry deck
- 5 bedrooms, 2 bathrooms and downstairs laundry
- Under-house storage and vehicle parking

Positioned in a riverside precinct, only 14 minutes from the CBD, this property offers lifestyle convenience. The shopping and dining at Portside Wharf and Racecourse Road are moments away, and the scenic Riverwalk and Northshore are accessible in minutes. Excellent transport and schools are close at hand, and Brisbane Airport is only 12 minutes away.

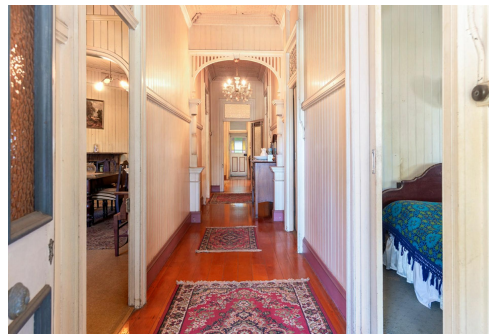
*Subject to Brisbane City Council approval

More About this Property

Property ID	295HXX
Property Type	House
Land Area	810 m ²

Tony Cicchiello 0418 747 266
Principal | tony.c@ljhclayfield.com.au

LJ Hooker Clayfield (07) 3262 2434
723 Sandgate Road, CLAYFIELD QLD 4011
clayfield.ljhooker.com.au | admin@ljhclayfield.com.au



LJ Hooker Clayfield
(07) 3262 2434

Disclaimer: All information contained therein is gathered from relevant third parties sources. We cannot guarantee or give any warranty about the information provided. Interested parties must rely solely on their own enquiries.