



107 Nettle Drive, Hallam




Exceptional Family Living with Multiple Master Suites & Prime Hallam Location

Perfectly positioned in the heart of Hallam, this beautifully maintained double-storey residence at 107 Nettle Drive delivers the ideal combination of space, style, and convenience, just moments from local shops, schools, public transport, including Hallam train station, and only minutes to Westfield Fountain Gate and the Monash Freeway.

This grand family home has been thoughtfully designed to accommodate large or extended families, offering flexible living zones, multiple master suites, and a spacious layout that blends comfort with practicality.

From the moment you enter, you're greeted by a striking staircase beneath soaring ceilings, setting the tone for the home's elegant interior. Glossy tiled flooring flows throughout the lower level, enhancing the warmth and openness of the space, while custom-made blinds throughout the home provide privacy and sophistication.

The heart of the home is the modern open-plan kitchen and meals

5  4  2 

FOR SALE
\$1,250,000 to \$1,350,000

AGENTS

Latif Samadi
0494 045 669
latif.samadi@ljhooker.com.au

Rohullah Paykari
0423 649 553
rpaykari.dandenong@ljhooker.com.au

AGENCY

LJ Hooker Dandenong City | Berwick
(03) 9877 9750

All information contained therein is gathered from relevant third parties sources.
We cannot guarantee or give any warranty about the information provided.
Interested parties must rely solely on their own enquiries.

 **LJ Hooker**

area, complete with a built-in pantry, stainless steel gas cooktop, oven, and dishwasher - all overlooking a low-maintenance backyard and expansive alfresco area, perfect for year-round entertaining.

Key Features:

- Five spacious bedrooms
- Four sleek bathrooms
- One master bedroom conveniently located on the ground floor - ideal for elderly family members, guests, or teenagers
- Multiple living areas
- Open-plan kitchen with high-quality kitchen appliances and built-in pantry
- High ceilings and a feature staircase add grandeur to the entry
- Custom blinds, quality tiling, and modern finishes throughout
- Heating: YES
- Cooling: YES
- Solar panel system
- Beautiful alfresco area overlooking a secure and low-maintenance backyard
- Double garage with internal and rear access
- Positioned in a quiet, family-friendly street close to Hallam Station, schools, parks, local shops, and major arterials

This home truly has it all - room to grow, room to entertain, and a location that keeps everything within easy reach. Whether you have a large family or simply want a home that offers maximum flexibility and comfort, 107 Nettle Drive is the one you've been waiting for.

Inspect today and discover the lifestyle your family deserves.

DISCLAIMERS:

Every reasonable effort has been made to ensure the accuracy of the information provided; however, neither the vendor, agent, nor agency makes any representation or warranty as to its completeness or correctness.

The floor plans provided are for illustrative purposes only and should be treated as such. No liability is accepted for any inaccuracies or omissions in the details or dimensions represented.

As the property may be subject to private inspections, the sale status could change prior to scheduled Open Homes. Prospective buyers are advised to verify the current availability of the property before attending any inspection.

MORE DETAILS

Property ID 660HWR
Property Type House

Latif Samadi 0494 045 669

Sales Specialist | latif.samadi@ljhooker.com.au

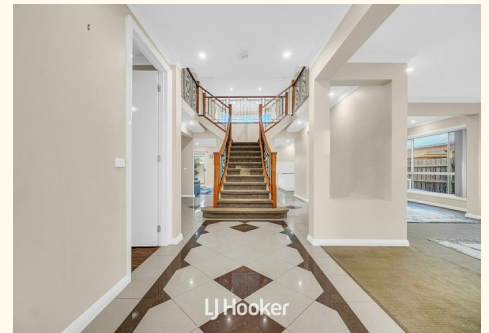
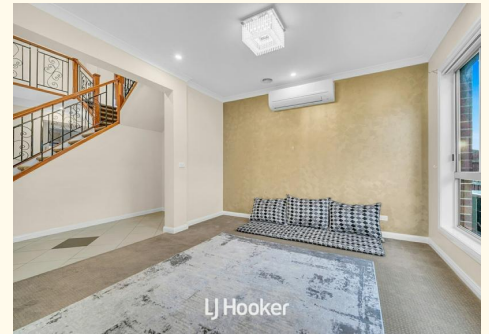
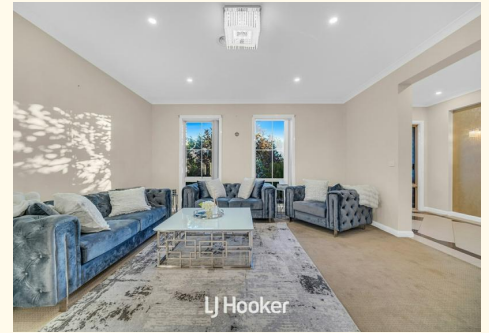
Rohullah Paykari 0423 649 553

Owner/ Principal | rpaykari.dandenong@ljhooker.com.au

LJ Hooker Dandenong City | Berwick (03) 9877 9750

347 Lonsdale Street, DANDENONG VIC 3175

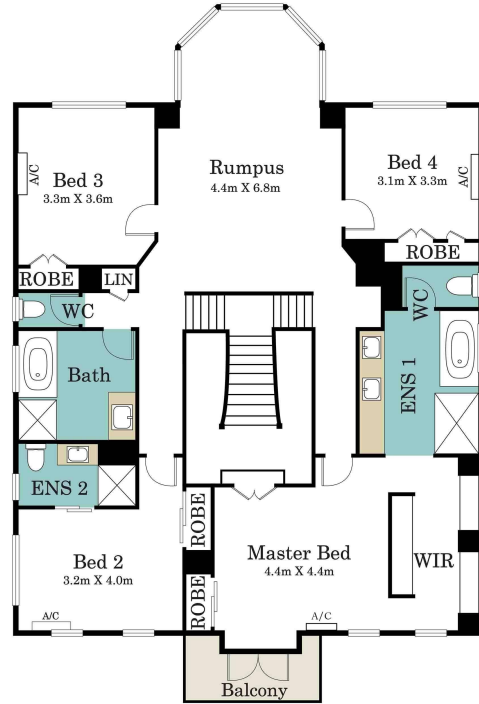
dandenong.ljhooker.com.au | dandenong@ljhooker.com.au



Ground Floor



First Floor



LJ Hooker



107 Nettle Drive, Hallam

* Dimensions are approximate and for illustrative purposes only