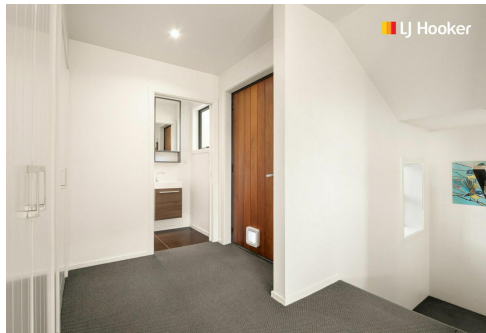




SOLD



Halfway Bush, 9 & 10 Kereru Close

Huge Value - 4 Bed, 3 Bath House + Section

Our vendors are heading overseas and selling the whole package, which includes a 2011 built house with plenty of space and a partially completed garage at the rear of the 1241sqm site, along with the adjoining 759sqm vacant section on its own title. A superb proposition to extract value in the future by completing the garage and building next door, or sell the vacant section and utilise the funds to enhance your home at No.9.....many possibilities beckon! The existing house is positioned over three levels and captures a fantastic outlook, along with providing accommodation for a large family thanks to the 4 bedrooms + office, 3 bathrooms and 4 toilet configuration. Genuinely for sale and a genuinely good investment for the astute buyer!

4 

3 

0 

For Sale
\$775,000

View
ljhooker.co.nz/3M7RGDS

Contact
Jason Hynes
021 225 5527
Jason@ljhdunedin.co.nz
Lawrence Schaumann
027 418 6204
lawrence@ljhdunedin.co.nz

More About this Property

Property ID	3M7RGDS
Property Type	House
Land Area	2000 m ²
Including	Toilets (4)
Licensed Real Estate Agents (REAA2008)	

Jason Hynes 021 225 5527

Managing Director / Licensee / Auctioneer | Jason@ljhdunedin.co.nz

Lawrence Schaumann 027 418 6204

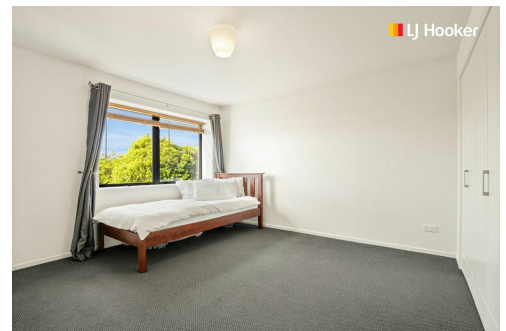
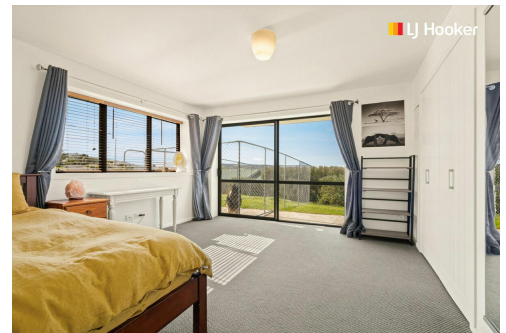
Licensee | lawrence@ljhdunedin.co.nz

LJ Hooker Dunedin (03) 470 1370

Wayne Graham Realty Ltd

63 Musselburgh Rise, DUNEDIN 9013

dunedin.ljhooker.co.nz | dunedin@ljhdunedin.co.nz



Disclaimer: All information contained therein is gathered from relevant third parties sources. We cannot guarantee or give any warranty about the information provided. Interested parties must rely solely on their own enquiries.

LJ Hooker Dunedin
(03) 470 1370
Wayne Graham Realty Ltd