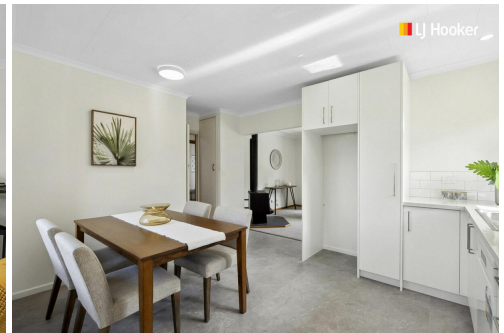
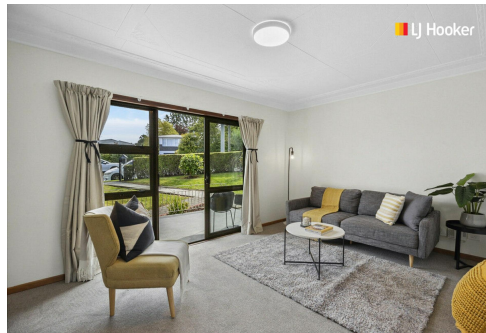


SOLD



Halfway Bush, 21 Turner Street

An Absolute Gem- Price to Sell This Weekend.

Here's your chance to step into the property market with this charming, low-maintenance home. Perfectly suited for first-time buyers, this permanent material home with double glazing is a must-see!

The north-facing open-plan living space is drenched in natural light and includes a cozy wood burner with a wetback system, reducing your heating costs through the colder months. During summer, enjoy seamless indoor-outdoor living with sliding doors that open up to a sunny patio and generous yard.

The modern kitchen and dining area are stylishly designed with neutral tones, complemented by brand-new carpets throughout, creating a fresh and inviting feel. Additionally, a spacious basement garage adds convenience and ample storage space. Fully compliant to Healthy Homes standards, this home offers comfort and peace of mind. With all these fantastic features, don't wait--call me today to arrange a viewing and make this gem yours!

3 

1 

1 

For Sale

Offers Over \$539,000

View

l.jhooker.co.nz/3PPDGDS

Contact

Pam Mulder

027 454 3366

Pam@l.jhdunedin.co.nz

More About this Property

Property ID	3PPDGDS
Property Type	House
Land Area	544 m2
Licensed Real Estate Agents (REAA2008)	

Pam Mulder 027 454 3366

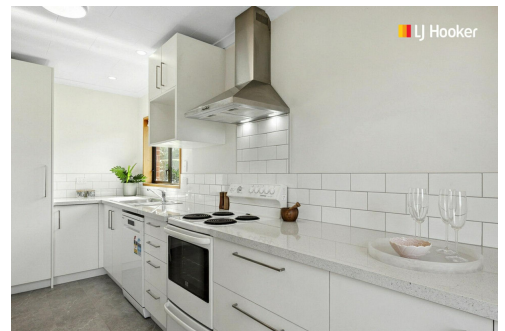
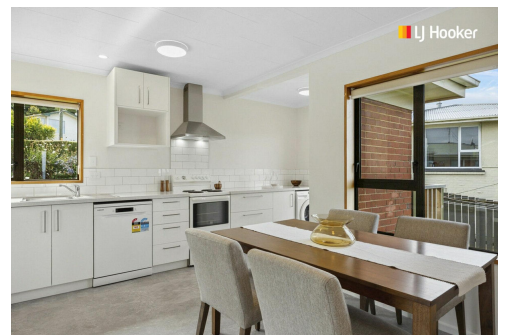
Licensee/Auctioneer | Pam@ljhdunedin.co.nz

LJ Hooker Dunedin (03) 470 1370

Wayne Graham Realty Ltd

63 Musselburgh Rise, DUNEDIN 9013

dunedin.ljhooker.co.nz | dunedin@ljhdunedin.co.nz



Disclaimer: All information contained therein is gathered from relevant third parties sources.

We cannot guarantee or give any warranty about the information provided. Interested parties must rely solely on their own enquiries.

LJ Hooker Dunedin

(03) 470 1370

Wayne Graham Realty Ltd