



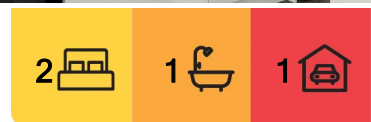
Halfway Bush, 18 Mooltan Street

Ideal First Home!

This delightful 1950's brick and tile home, nestled in the sunny and sought-after neighborhood of Halfway Bush, is ready for its new owners to enjoy. The home boasts two spacious bedrooms filled with natural light and a modern, well-appointed bathroom. The contemporary kitchen offers plenty of storage and flows seamlessly into a dining area, which connects beautifully to the living space warmed by a cozy wood burner. A heat pump in the hallway ensures comfort throughout the year.

The private rear section features a deck, perfect for entertaining or relaxing in peace. With off-street parking, a convenient carport, and excellent basement storage, practicality meets charm in this property. Its location adds to the appeal, with great views, proximity to public transport, and nearby schools completing the picture.

Don't miss the chance to make this inviting home yours-schedule a viewing today!



For Sale
Negotiation

View
Sat 30th Nov @ 2:00PM - 2:30PM

Contact
Reagan Curline
0278464545
reagan@ljhdunedin.co.nz

Toni Curline
0212225469
toni@ljhdunedin.co.nz

More About this Property

Property ID	3P34GDS
Property Type	House
House Size	90 m ²
Land Area	663 m ²
Licensed Real Estate Agents (REAA2008)	

Reagan Curline 0278464545

Licensee | reagan@ljhdunedin.co.nz

Toni Curline 0212225469

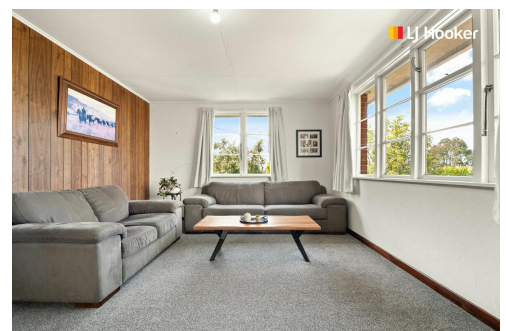
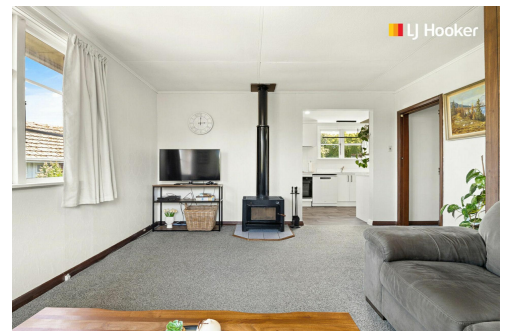
Licensee | toni@ljhdunedin.co.nz

LJ Hooker Dunedin (03) 470 1370

Wayne Graham Realty Ltd

63 Musselburgh Rise, DUNEDIN 9013

dunedin.ljhooker.co.nz | dunedin@ljhdunedin.co.nz



Disclaimer: All information contained therein is gathered from relevant third parties sources.

We cannot guarantee or give any warranty about the information provided. Interested parties must rely solely on their own enquiries.

LJ Hooker Dunedin

(03) 470 1370

Wayne Graham Realty Ltd

