

Hahndorf, 1 Stempel Avenue

Zen-Inspired Hillside Haven

2 1 2

Expressions of interest by Tuesday 22nd July 12pm

Welcome to a home where tranquility, design and lifestyle come together in perfect harmony. Perched on a generous approx. 800m2 corner allotment in one of Hahndorf's most picturesque pockets, this custom built Japanese inspired home offers a rare blend of peace, privacy and passive design. Thoughtfully crafted with natural flow and everyday ease in mind, the home is a true sanctuary, surrounded by manicured oriental gardens and framed by stunning Japanese maple trees.

Stepping inside, you'll immediately feel a sense of calm. Light spills through double glazed windows into the open plan living area, where high ceilings and timber textures create a warm, inviting atmosphere. Multiple sliding doors open to the expansive wrap around deck, making entertaining or simply enjoying a morning coffee feel effortless. Whether you're an active downsizer, a couple seeking a low maintenance retreat, or a savvy investor looking

For Sale
Expressions Of Interest

View
By Appointment

Contact
Luke Mitchell
0411 703 055
luke.mitchell@ljhadelaidemetro.com.au



LJ Hooker St Peters
(08) 8362 8008

Disclaimer: All information contained therein is gathered from relevant third parties sources. We cannot guarantee or give any warranty about the information provided. Interested parties must rely solely on their own enquiries.

for a unique hills hideaway, this flexible floorplan and timeless design will exceed expectations.

Key Features:

- Architecturally designed with Japanese influence and 6 star energy rating
- Two generous bedrooms plus study or third bedroom
- Wide access points/hallways cater to wheelchair accessibility
- Light filled living with high ceilings and seamless indoor-outdoor flow
- Wrap around timber deck with multiple access points
- Two-way bathroom off the master bedroom
- Ground level storage and second entertaining space
- 3 large rainwater tanks
- Double carport, landscaped corner block
- Japanese inspired rock garden

Surrounded by the charm and character of historic Hahndorf, this is more than just a home, it's a lifestyle. A gentle stroll leads you to the town's buzzing main street, dotted with cafes, wine bars, bakeries and boutique stores. Enjoy leisurely weekends exploring the local markets, walking trails and artisan producers that make the Adelaide Hills famous.

Families and downsizers alike will appreciate the proximity to quality schools. With easy access to Mount Barker and just 25 minutes to the Adelaide CBD, this unique offering delivers the perfect balance of peaceful village living with modern day convenience.

A rare and refined retreat, ready to welcome its next chapter.

Purchasing this property as an investment? Talk with Kirsty Clark from our PM team and see why our Property Management department is #1 amongst all the LJ Hooker offices Worldwide.

** All information provided has been obtained from sources we believe to be accurate, however, we cannot guarantee the information is accurate and we accept no liability for any errors or omissions (including but not limited to a property's land size, floor plans and size, building age and condition). Interested parties should make their own enquiries and obtain their own legal advice.

RLA 61345 RLA 282965 RLA 231015

More About this Property

Property ID	2DAKFDZ
Property Type	House
Land Area	800 m2

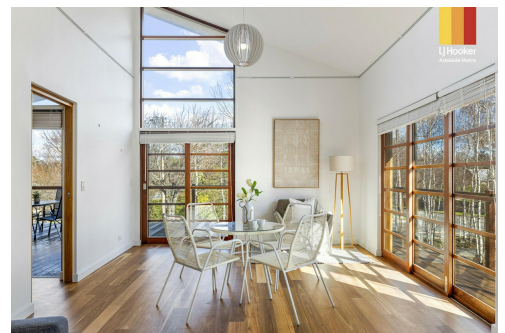
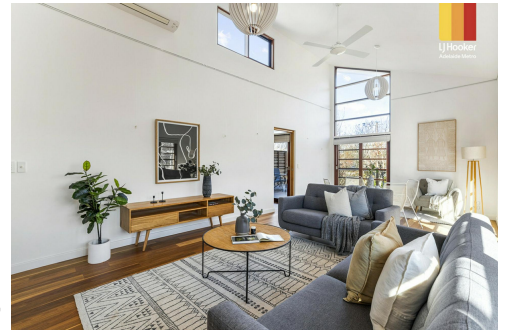
Luke Mitchell 0411 703 055

Sales Consultant | luke.mitchell@ljhadelaidemetro.com.au

LJ Hooker St Peters (08) 8362 8008

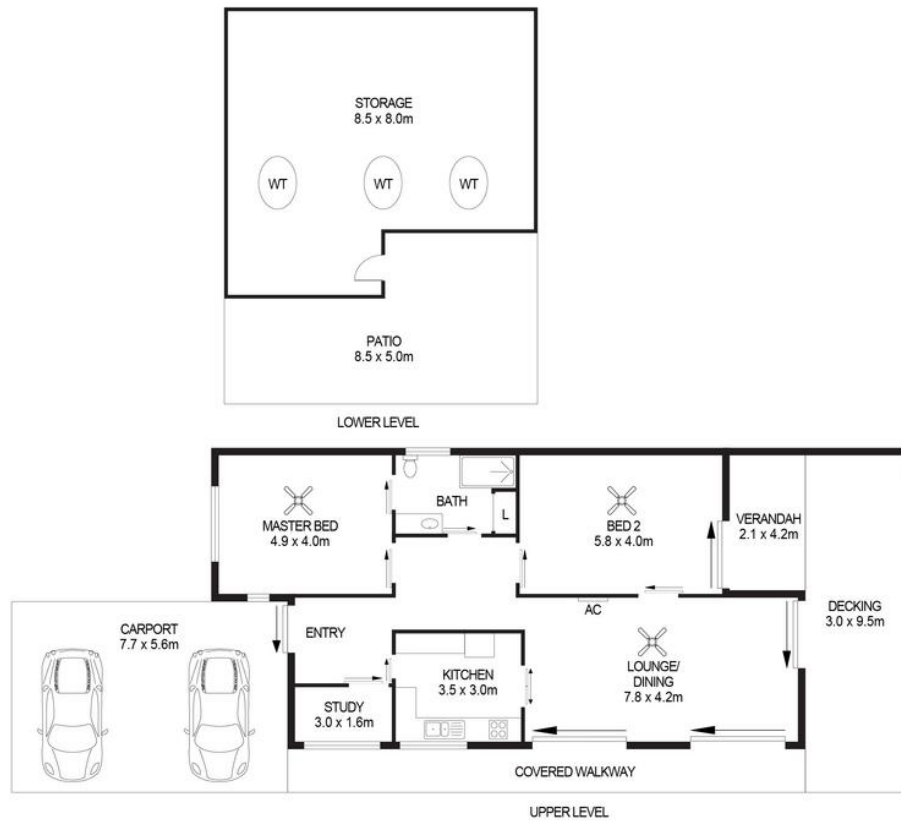
2a Portrush Road, PAYNEHAM SA 5070

stpeters.ljhooker.com.au | stpeters@ljhadelaidemetro.com.au



Disclaimer: All information contained therein is gathered from relevant third parties sources. We cannot guarantee or give any warranty about the information provided. Interested parties must rely solely on their own enquiries.

**LJ Hooker St Peters
(08) 8362 8008**



1 STREMPER AVENUE, HAHNDORF

DISCLAIMER

PLANS SHOWN ARE FOR MARKETING PURPOSES ONLY. ALL DIMENSIONS ARE APPROXIMATE AND NOT TO SCALE. THEY ARE SUBJECT TO ERRORS AND INACCURACIES AND NO LIABILITY WILL BE ACCEPTED. INTERESTED PARTIES SHOULD MAKE THEIR OWN ENQUIRIES.



IMAGES AND FLOORPLAN BY:
IN-HOUSE
IMAGING
inhouseimaging.com.au